

| | | | |
|-------------------|-------------|----------|-------------|
| LOC/DME I-LNR | APP CRS | Rwy Idg | 5000 |
| 108.35 | 270° | TDZE | 717 |
| Chan 20(Y) | | Apt Elev | 717 |

LOC RWY 27

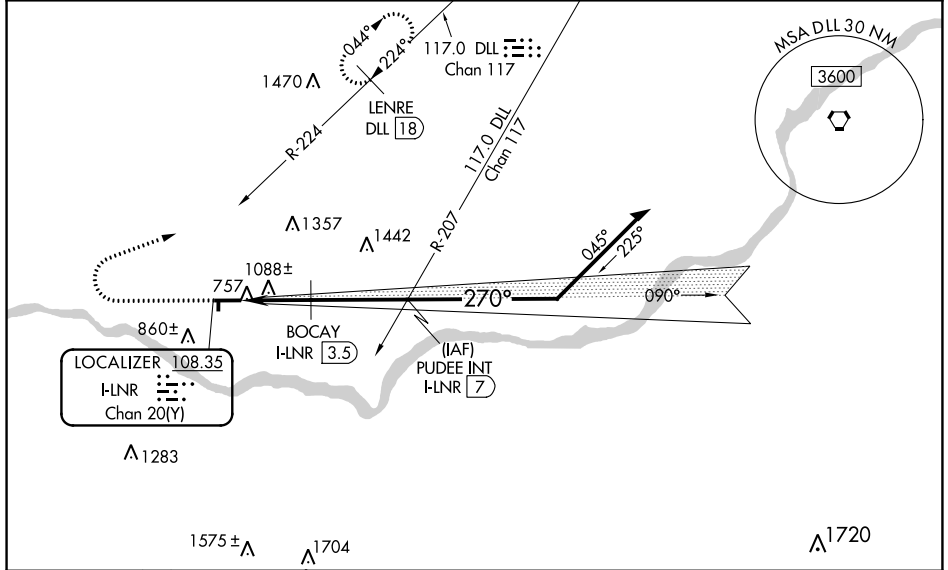
TRI-COUNTY RGNL (LNR)

DME required. RADAR required for procedure entry.

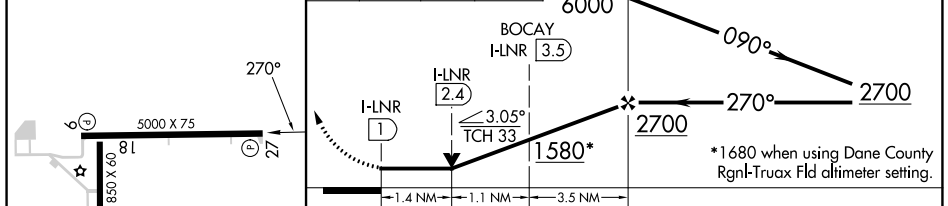
NA
Circling Rwy 18, 36 NA at night. Rwy 27 helicopter visibility reduction below 3/4 SM NA. If local altimeter setting not received, use Dane County Rgnl-Truox fld altimeter setting and increase all MDA 120 feet. Increase S-27 visibility Cat A/B 1/4 SM, Cat C 1/2 SM, Circling visibility Cat B 1/4 SM, Cat C 1/2 SM. Increase BOCAV fix minimums S-27 visibility Cat C 1/4 SM, Circling Cat A/B 1/4 SM, Cat C 1/2 SM.

MISSED APPROACH:
Climb to 2200 then climbing right turn to 3300 on heading 070° and on DLL R-224 to LENRE/DLL VORTAC 18 DME and hold.

| | | |
|------------------------|--|---------------------------------|
| ASOS 119.425 | MADISON APP CON ★ 135.45 343.7 | UNICOM 123.0 (CTAF) 0 |
|------------------------|--|---------------------------------|



| | | | | | | |
|----------|----------|------|------|-----------|--------------|--|
| ELEV 717 | TDZE 717 | 2200 | 3300 | DLL R-224 | LENRE DLL 18 | VGSI and descent angles not coincident (VGSI Angle 4.00/TCH 35). |
|----------|----------|------|------|-----------|--------------|--|



| CATEGORY | A | B | C | D |
|--------------------|-------------------------|-------------------------|-------------------------|----|
| S-LOC 27 | 1580-1 863 (900-1) | 1580-1¼ 863 (900-1¼) | 1580-2½ 863 (900-2½) | NA |
| C CIRCLING | 1580-1¼ 863 (900-1¼) | 863 (900-1¼) | 1580-2½ 863 (900-2½) | NA |
| BOCAV FIX MINIMUMS | | | | |
| S-LOC 27 | 1360-1 643 (700-1) | 643 (700-1) | 1360-1¾ 643 (700-1¾) | NA |
| C CIRCLING | 1520-1 803 (900-1) | 803 (900-1) | 1560-2½ 843 (900-2½) | NA |

REIL Rwy 9 and 27
MIRL Rwys 9-27 and 18-36
FAF to MAP 6 NM

| | | | | | |
|---------|------|------|------|------|------|
| Knots | 60 | 90 | 120 | 150 | 180 |
| Min:Sec | 6:00 | 4:00 | 3:00 | 2:24 | 2:00 |

EC-3, 28 NOV 2024 to 26 DEC 2024

EC-3, 28 NOV 2024 to 26 DEC 2024