

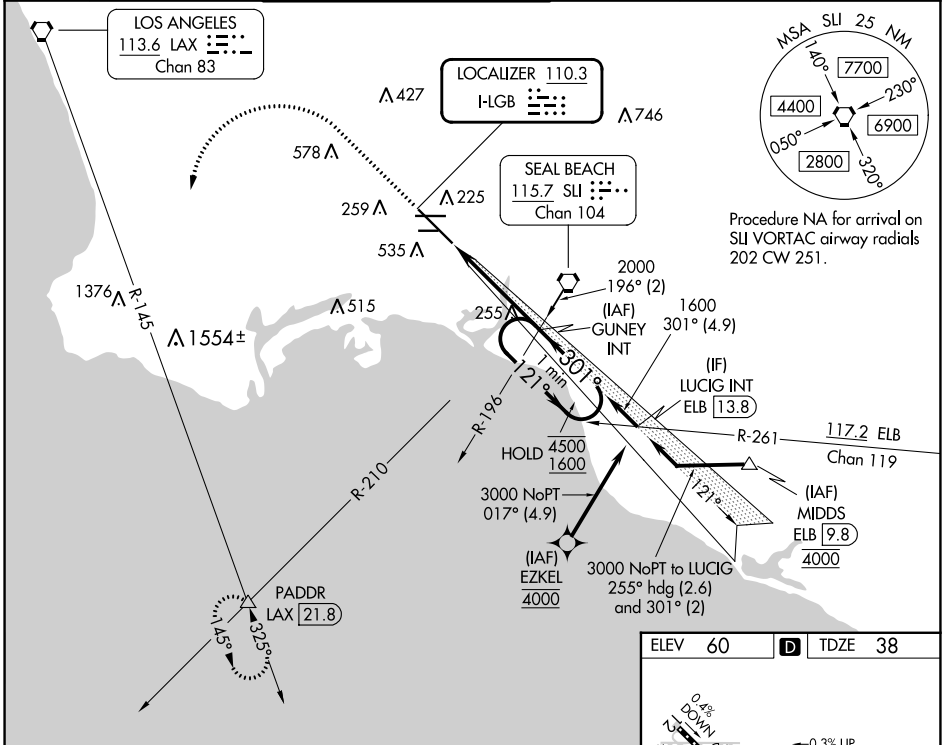
LOC I-LGB	APP CRS	Rwy Ldg	7414
110.3	301°	TDZE	38
		Apt Elev	60

ILS or LOC RWY 30

LONG BEACH (DAUGHERTY FLD) (LGB)

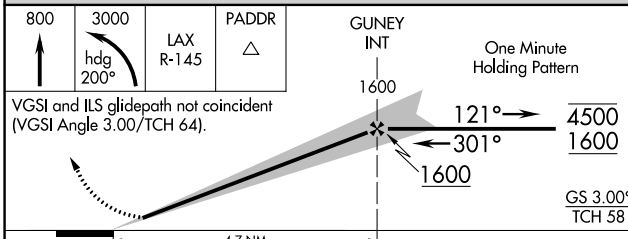
From EZKEL: RNAV 1-GPS required.	MALSR	MISSED APPROACH: Climb to 800 then climbing left turn to 3000 on heading 200° and LAX VORTAC R-145 to PADDR INT/LAX 21.8 DME and hold.
For inop ALS, increase S-LOC 30 Cats C/D visibility to 1 3/8 SM.		

ATIS 127.75	SOCAL APP CON 125.35 316.125	LONG BEACH TOWER ★ 120.5 257.6 (Rwy 12) 119.4 (CTAF) 257.6 (Rwy 30)	GND CON 133.0 257.6	CLNC DEL 118.15	UNICOM 122.95
-----------------------	--	--	-------------------------------	---------------------------	-------------------------



SW-3, 28 NOV 2024 to 26 DEC 2024

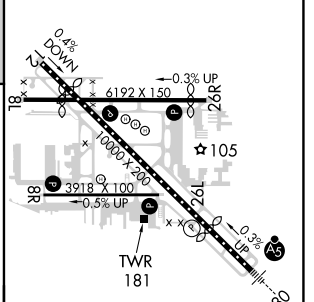
SW-3, 28 NOV 2024 to 26 DEC 2024



800	3000	LAX R-145	PADDR
↑	hdg 200°		△

VGSI and ILS glidepath not coincident (VGSI Angle 3.00/TCH 64).

ELEV 60	D	TDZE 38
---------	---	---------



CATEGORY	A	B	C	D
S-ILS 30	258/18		220 (200-1/2)	
S-LOC 30	520/24	482 (500-1/2)	520/50	482 (500-1)
CIRCLING	840-1	780 (800-1)	840-2 1/4 780 (800-2 1/4)	840-2 1/2 780 (800-2 1/2)

TDZ/CL Rwy 30	HIRL Rwy 12-30				
	HIRL Rwy 8R-26L				
	MIRL Rwy 8L-26R				
	REIL Rwy 8R, 12, 26L, and 26R				
	FAF to MAP 4.7 NM				
Knots	60	90	120	150	180
Min:Sec	4:42	3:08	2:21	1:53	1:34