

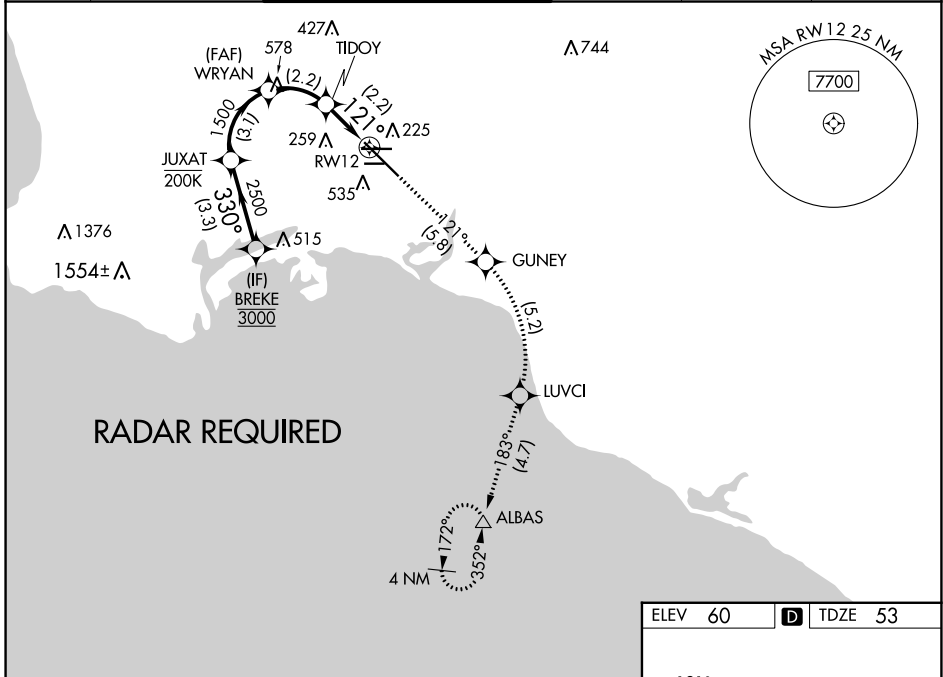
APP CRS	Rwy Idg	8650
121°	TDZE	53
	Apt Elev	60

RNAV (RNP) RWY 12

LONG BEACH (DAUGHERTY FLD) (LGB)

<p>▽ ▲</p> <p>For uncompensated Baro-VNAV systems, procedure NA below 4°C (40°F) or above 54°C (130°F). RF required. GPS required.</p>	<p>MISSED APPROACH: Climb to 3000 on track 121° to GUNEY, right turn to LUVCI, and on track 183° to ALBAS and hold.</p>	
--	---	--

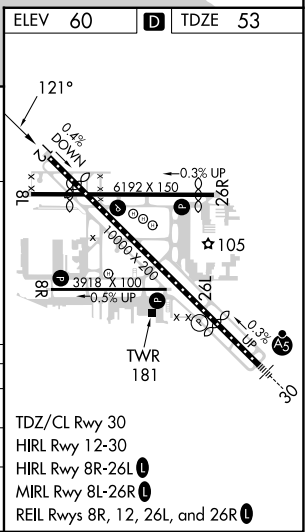
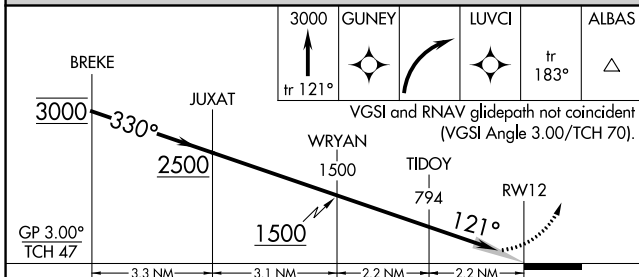
ATIS 127.75	SOCAL APP CON 125.35 316.125	LONG BEACH TOWER* 120.5 257.6 (Rwy 12) 119.4 (CTAF) 257.6 (Rwy 30)	GND CON 133.0 257.6	CLNC DEL 118.15	UNICOM 122.95
-----------------------	--	---	-------------------------------	---------------------------	-------------------------



RADAR REQUIRED

SW-3, 28 NOV 2024 to 26 DEC 2024

SW-3, 28 NOV 2024 to 26 DEC 2024



CATEGORY	A	B	C	D
RNP 0.15 DA		414-1¼	361 (400-1¼)	
RNP 0.30 DA		485-1½	432 (500-1½)	

AUTHORIZATION REQUIRED