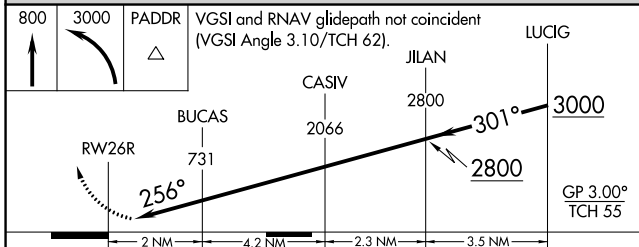
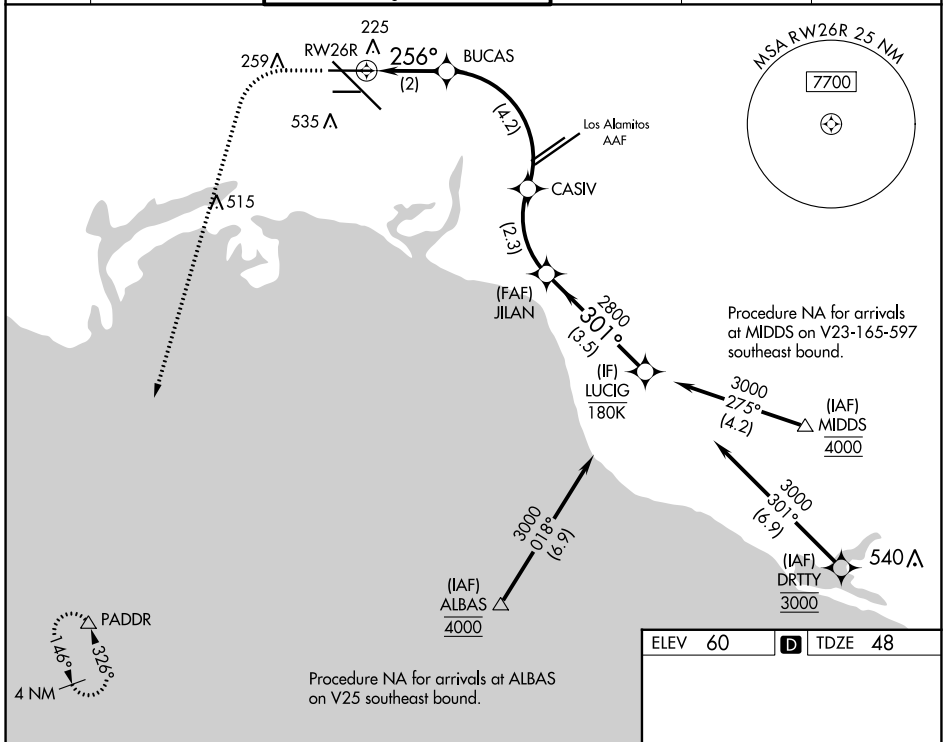


APP CRS	Rwy Idg	<b>5660</b>
<b>256°</b>	TDZE	<b>48</b>
	Apt Elev	<b>60</b>

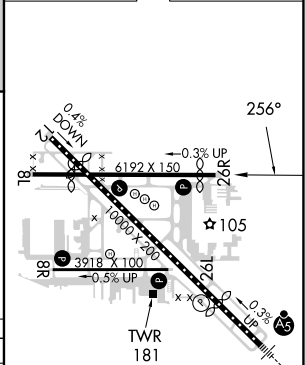
# RNAV (RNP) RWY 26R

LONG BEACH (DAUGHERTY FLD) (LGB)

RNP AR APCH. RF required.		MISSED APPROACH: Climb to 800 then climbing left turn to 3000 direct PADDR and hold.			
<p><b>▽</b> For uncompensated Baro-VNAV systems, procedure NA below 4°C (40°F) or above 54°C (130°F).</p> <p><b>△</b></p>					
ATIS	SOCAL APP CON	LONG BEACH TOWER*	GND CON	CLNC DEL	UNICOM
<b>127.75</b>	<b>125.35 316.125</b>	<b>120.5 257.6</b> (Rwy 12) <b>119.4</b> (CTAF) <b>0 257.6</b> (Rwy 30)	<b>133.0 257.6</b>	<b>118.15</b>	<b>122.95</b>



ELEV 60	<b>D</b> TDZE 48
---------	------------------



CATEGORY	A	B	C	D
RNP 0.15 DA		320-1	272 (300-1)	
RNP 0.30 DA		415-1¼	367 (400-1¼)	
<b>AUTHORIZATION REQUIRED</b>				

TDZ/CL Rwy 30  
 HIRL Rwy 12-30  
 HIRL Rwy 8R-26L **Ⓛ**  
 MIRL Rwy 8L-26R **Ⓛ**  
 REIL Rwy 8R, 12, 26L, and 26R **Ⓛ**

SW-3, 28 NOV 2024 to 26 DEC 2024

SW-3, 28 NOV 2024 to 26 DEC 2024