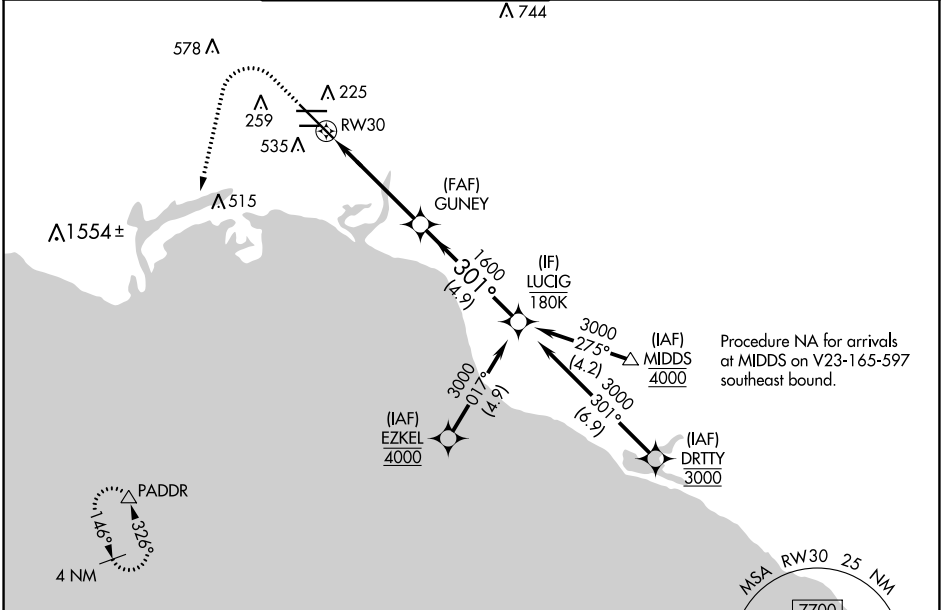


APP CRS	Rwy Idg	7414
301°	TDZE	38
	Apt Elev	60

RNAV (RNP) Y RWY 30

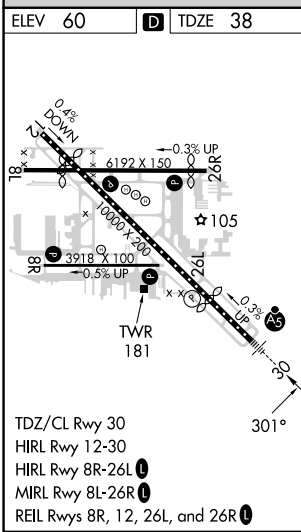
LONG BEACH (DAUGHERTY FLD) (LGB)

RNP AR APCH.		MALSR		MISSED APPROACH: Climb to 800 then climbing left turn to 3000 direct PADDR and hold.	
For uncompensated Baro-VNAV systems, procedure NA below 4° C or above 54° C.					
ATIS	SOCAL APP CON	LONG BEACH TOWER*	GND CON	CLNC DEL	UNICOM
127.75	125.35 316.125	120.5 257.6 (Rwy 12) 119.4 (CTAF) 257.6 (Rwy 30)	133.0 257.6	118.15	122.95



SW-3, 28 NOV 2024 to 26 DEC 2024

SW-3, 28 NOV 2024 to 26 DEC 2024



800	3000	PADDR	VGSI and RNAV glidepath not coincident (VGSI Angle 3.00/TCH 64).	
		LUCIG		
		GUNEY		
		RW30		
		GP 3.00° TCH 58		
CATEGORY	A	B	C	D
RNP 0.30 DA	384/30		346 (400-5%)	
AUTHORIZATION REQUIRED				