

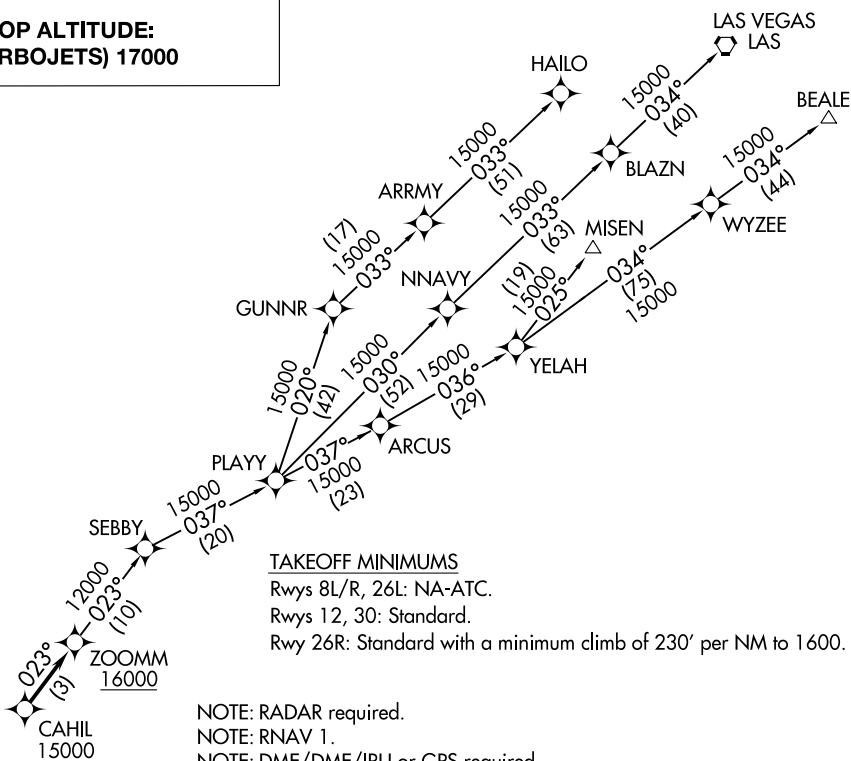
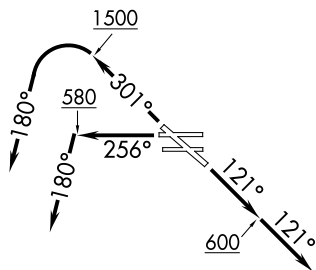
**TOP ALTITUDE:  
(TURBOJET) 17000**

ATIS  
127.75  
CLNC DEL  
118.15  
GND CON  
133.0 257.6  
SOCAL DEP CON  
125.35 316.125 (Rwys 12)  
127.2 269.6 (Rwys 26R, 30)

ZOOMM THREE DEPARTURE (RNAV)  
(ZOOMM3, ZOOMM) 10SEP20



LONG BEACH, CALIFORNIA  
LONG BEACH (DAUGHERTY FLD) (LGB)



**TAKEOFF MINIMUMS**

Rwys 8L/R, 26L: NA-ATC.  
Rwys 12, 30: Standard.  
Rwy 26R: Standard with a minimum climb of 230' per NM to 1600.

- NOTE: RADAR required.
- NOTE: RNAV 1.
- NOTE: DME/DME/IRU or GPS required.
- NOTE: Turbojet only.
- NOTE: MISEN TRANSITION restricted to aircraft landing LAS terminal area.
- NOTE: HAILO/ LAS/ NNAVY transitions ATC only.

(NARRATIVE ON FOLLOWING PAGE)

NOTE: Chart not to scale.

(ZOOMM3, ZOOMM) 21168  
LONG BEACH (DAUGHERTY FLD) (LGB)  
LONG BEACH, CALIFORNIA  
ZOOMM THREE DEPARTURE (RNAV) AL-236 (FAA)



DEPARTURE ROUTE DESCRIPTION

TAKEOFF RUNWAY 12: Climb on heading 121° to 600, then on heading 121° or as assigned by ATC for vectors to cross CAHIL at or above 15000, then on track 023° to cross ZOOMM at or above 16000, thence. . . .

TAKEOFF RUNWAY 26R: Climb on heading 256° to 580, then on heading 180° or as assigned by ATC for vectors to cross CAHIL at or above 15000, then on track 023° to cross ZOOMM at or above 16000, thence. . . .

TAKEOFF RUNWAY 30: Climb on heading 301° to 1500, then left turn heading 180° or as assigned by ATC for vectors to cross CAHIL at or above 15000, then on track 023° to cross ZOOMM at or above 16000, thence. . . .

. . . .on (transition) turbojets maintain 17000, expect filed altitude 10 minutes after departure.

BEALE TRANSITION (ZOOMM3.BEALE)

HAILO TRANSITION (ZOOMM3.HAILO)

LAS VEGAS TRANSITION (ZOOMM3.LAS)

MISEN TRANSITION (ZOOMM3.MISEN)

NNAVY TRANSITION (ZOOMM3.NNAVY)

SW-3, 28 NOV 2024 to 26 DEC 2024

SW-3, 28 NOV 2024 to 26 DEC 2024