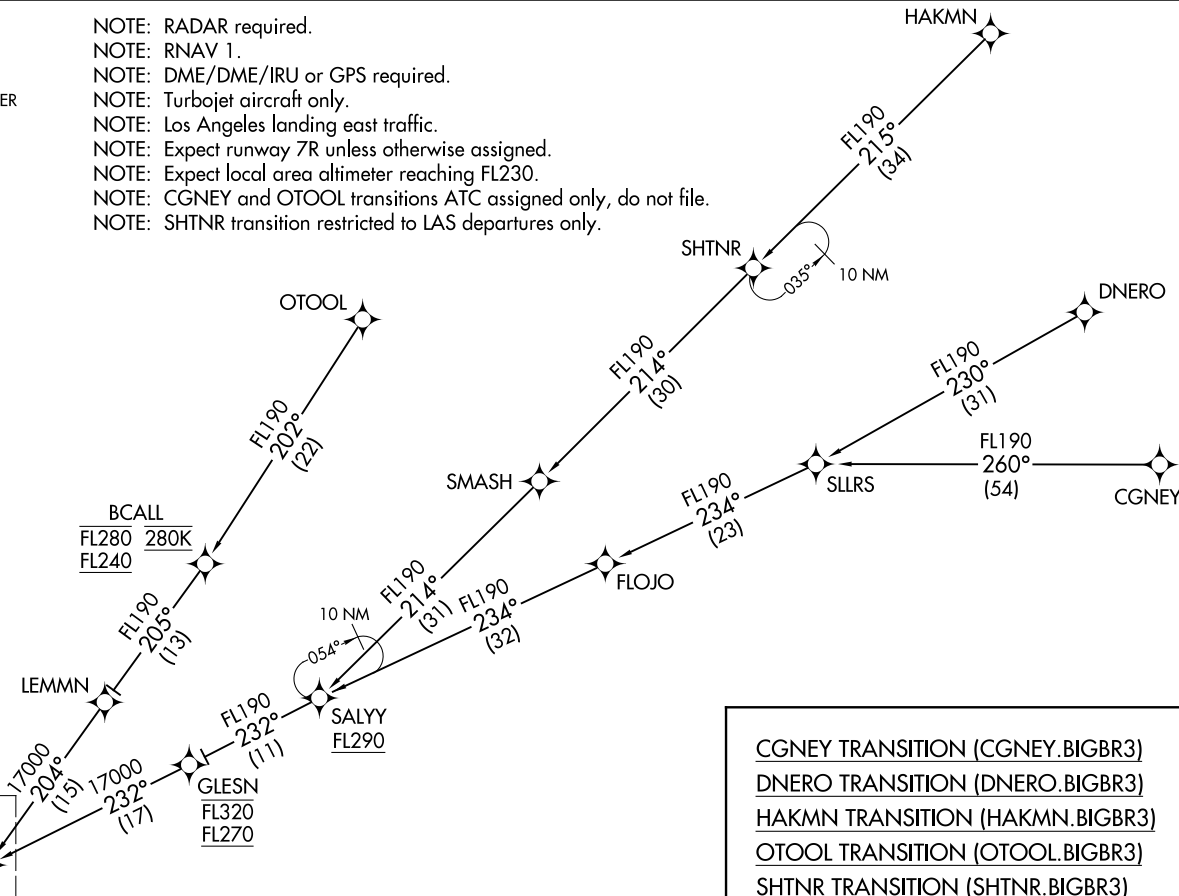


**BIGBR THREE ARRIVAL (RNAV) Transition Routes**  
(ANJLL.BIGBR3) 24MAY18

SOCAL APP CON  
124.05 353.775  
D-ATIS ARR  
133.8  
LOS ANGELES TOWER  
(N) 133.9 239.3  
(S) 120.95 379.1

- NOTE: RADAR required.
- NOTE: RNAV 1.
- NOTE: DME/DME/IRU or GPS required.
- NOTE: Turbojet aircraft only.
- NOTE: Los Angeles landing east traffic.
- NOTE: Expect runway 7R unless otherwise assigned.
- NOTE: Expect local area altimeter reaching FL230.
- NOTE: CGNEY and OTOOL transitions ATC assigned only, do not file.
- NOTE: SHTNR transition restricted to LAS departures only.



ANJLL  
FL290 280K  
FL240

See following page  
for Arrival Routes.

(CONTINUED ON FOLLOWING PAGE)

NOTE: Chart not to scale.

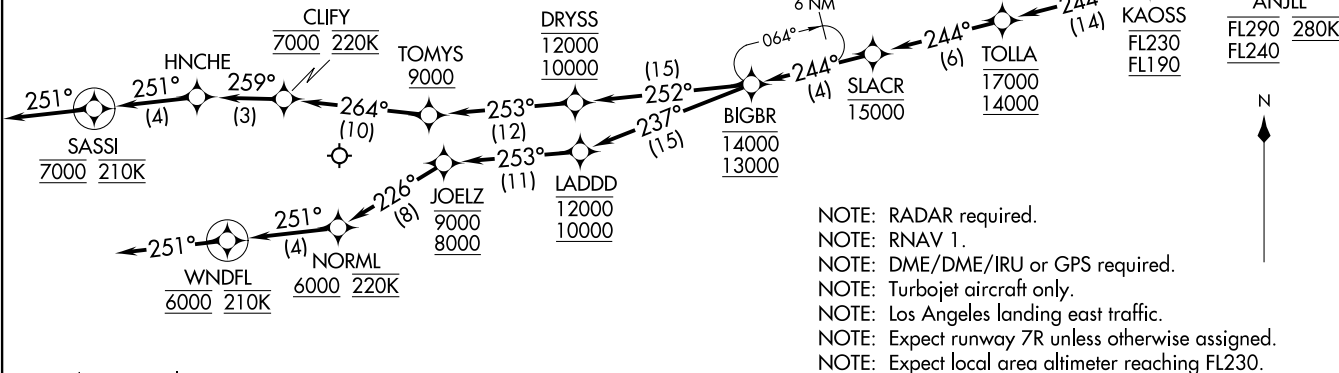
(ANJLL.BIGBR3) 18144  
**BIGBR THREE ARRIVAL (RNAV) Transition Routes**

LOS ANGELES INTL (LAX)  
LOS ANGELES, CALIFORNIA

LOS ANGELES, CALIFORNIA  
LOS ANGELES INTL (LAX)

(ANJLL.BIGBR3) 24MAY18  
**BIGBR THREE ARRIVAL (RNAV) Arrival Routes**

SOCIAL APP CON  
 124.05 353.775  
 D-ATIS ARR  
 133.8  
 LOS ANGELES TOWER  
 (N) 133.9 239.3  
 (S) 120.95 379.1



NOTE: Chart not to scale.

- NOTE: RADAR required.
- NOTE: RNAV 1.
- NOTE: DME/DME/IRU or GPS required.
- NOTE: Turbojet aircraft only.
- NOTE: Los Angeles landing east traffic.
- NOTE: Expect runway 7R unless otherwise assigned.
- NOTE: Expect local area altimeter reaching FL230.

**ARRIVAL ROUTE DESCRIPTION**

From ANJLL on track 240° to cross KAOSS between FL190 and FL230, then on track 244° to cross TOLLA between 14000 and 17000, then on track 244° to cross SLACR at or below 15000, then on track 244° to cross BIGBR between 13000 and 14000.

**LANDING RUNWAYS 6L/R:** From BIGBR on track 252° to cross DRYSS between 10000 and 12000, then on track 253° to cross TOMYS at or above 9000, then on track 264° to cross CLIFY at 7000 and at 220K, then on track 259° to HNCHE, then on track 251° to cross SASSI at 7000 and at 210K, then on track 251°. Expect RADAR vectors to ILS or RNAV (RNP) RWY 6L final approach course.

**LANDING RUNWAYS 7L/R:** From BIGBR on track 237° to cross LADDD between 10000 and 12000, then on track 253° to cross JOELZ between 8000 and 9000, then on track 226° to cross NORML at or above 6000 and at 220K, then on track 251° to cross WNDFL at 6000 and at 210K, then on track 251°. Expect RADAR vectors to ILS or RNAV (RNP) RWY 7R final approach course.

**LOST COMMUNICATIONS:** In the event of lost communication proceed on the RNAV (RNP) RWY 7R or ILS or LOC RWY 7R approach.

(ANJLL.BIGBR3) 181144  
**BIGBR THREE ARRIVAL (RNAV) Arrival Routes**

LOS ANGELES INTL (LAX)  
 LOS ANGELES, CALIFORNIA

LOS ANGELES, CALIFORNIA  
 LOS ANGELES INTL (LAX)