

CHATTY FIVE DEPARTURE
(CHATY5.CHATY) 27APR17

TOP ALTITUDE:
ASSIGNED BY ATC

SAN MARCUS
114.9 RZS
Chan 96

GAVIOTA
113.8 GVO
Chan 85

FILLMORE
112.5 FIM
Chan 72

VENTURA
116.55 VTU
Chan 112(Y)

GORMAN
116.1 GMN
Chan 108

TAKEOFF MINIMUMS

Rwys 24L/R, 25L/R: NA - Operational.
Rwys 6L/R, 7L/R: Standard.

NOTE: DME and RADAR required.
NOTE: Procedure for non turbojet aircraft only.

NOTE: Chart not to scale.



SOCAL DEP CON
124.3 363.2 (045°-224°)
125.2 263.025 (225°-044°)
D-ATIS DEP
135.65
CLNC DEL
120.35 327.0
CPDLC
GND CON
(N) 121.65 327.0
(S) 121.75 327.0
(W) 121.4 327.0
LOS ANGELES TOWER
(N) 133.9 239.3
(S) 120.95 379.1

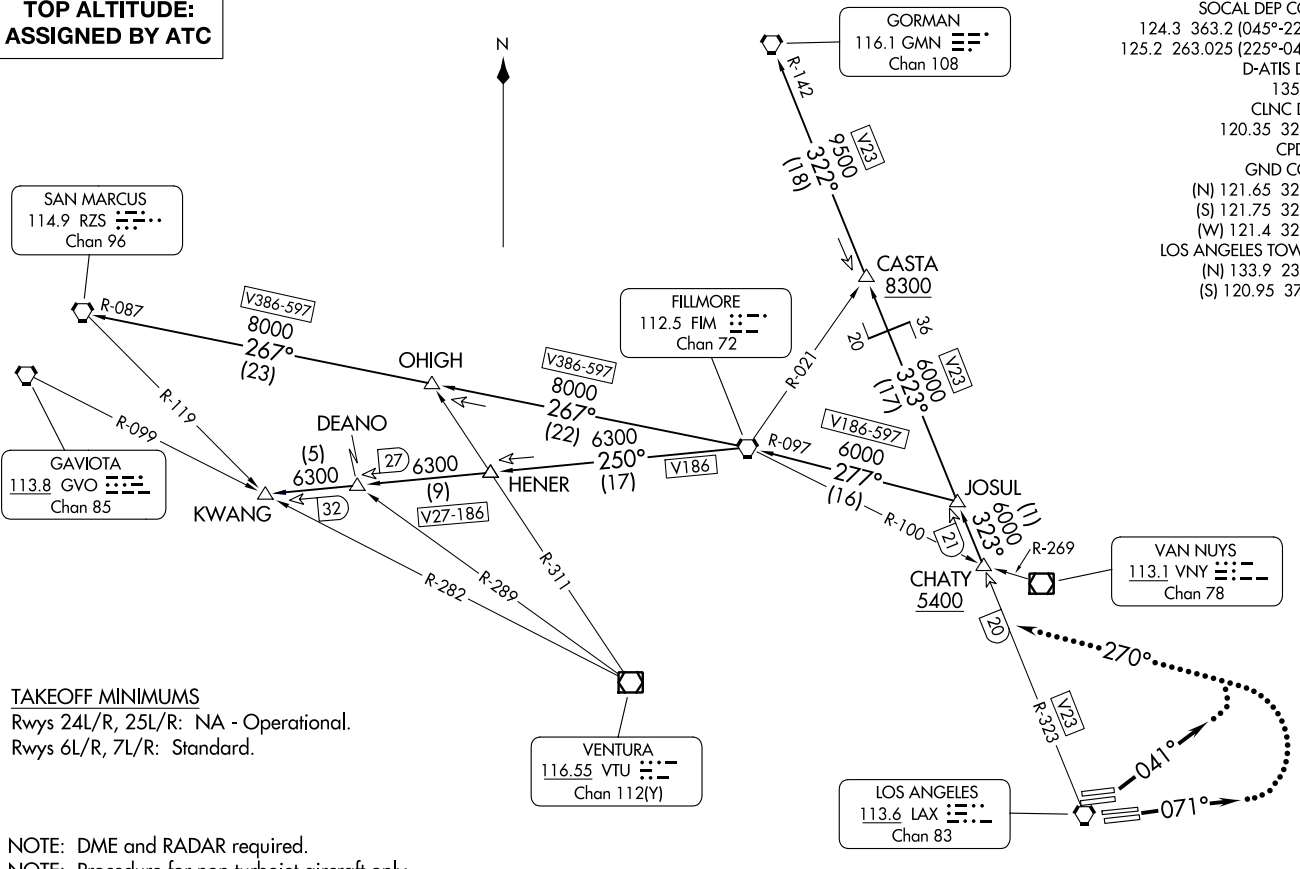
(CHATY5.CHATY) 23334
CHATTY FIVE DEPARTURE

AI-237 (FAA)

LOS ANGELES INTL (LAX)
LOS ANGELES CALIFORNIA

(CONTINUED ON FOLLOWING PAGE)

LOS ANGELES, CALIFORNIA
LOS ANGELES INTL (LAX)





DEPARTURE ROUTE DESCRIPTION

TAKEOFF RUNWAYS 6L/R: Climb heading 041° for vector to V23, thence. . . .

TAKEOFF RUNWAYS 7L/R: Climb heading 071° for vector to V23, thence. . . .

. . . .then on (transition) or (assigned route). Expect filed altitude 5 minutes after departure.

LOST COMMUNICATIONS

RUNWAYS 6L/R, 7L/R: If not in contact with departure control within 3 minutes after departure, turn left heading 270°, intercept V23 to CHATY INT and resume the CHATY FIVE DEPARTURE. Continue on course.

GORMAN TRANSITION (CHATY5.GMN): From over CHATY INT on LAX R-323 and GMN R-142 to GMN VORTAC.

HENER TRANSITION (CHATY5.HENER): From over CHATY INT on LAX R-323 to JOSUL, then on FIM R-097 to FIM VORTAC, then on FIM R-250 to HENER INT.

KWANG TRANSITION (CHATY5.KWANG): From over CHATY INT on LAX R-323 to JOSUL, then on FIM R-097 to FIM VORTAC, then on FIM R-250 to KWANG INT.

SAN MARCUS TRANSITION (CHATY5.RZS): From over CHATY INT on LAX R-323 to JOSUL, then on FIM R-097 to FIM VORTAC, then on FIM R-267 to OHIGH INT, then on RZS R-087 to RZS VORTAC.

SW-3, 28 NOV 2024 to 26 DEC 2024

SW-3, 28 NOV 2024 to 26 DEC 2024