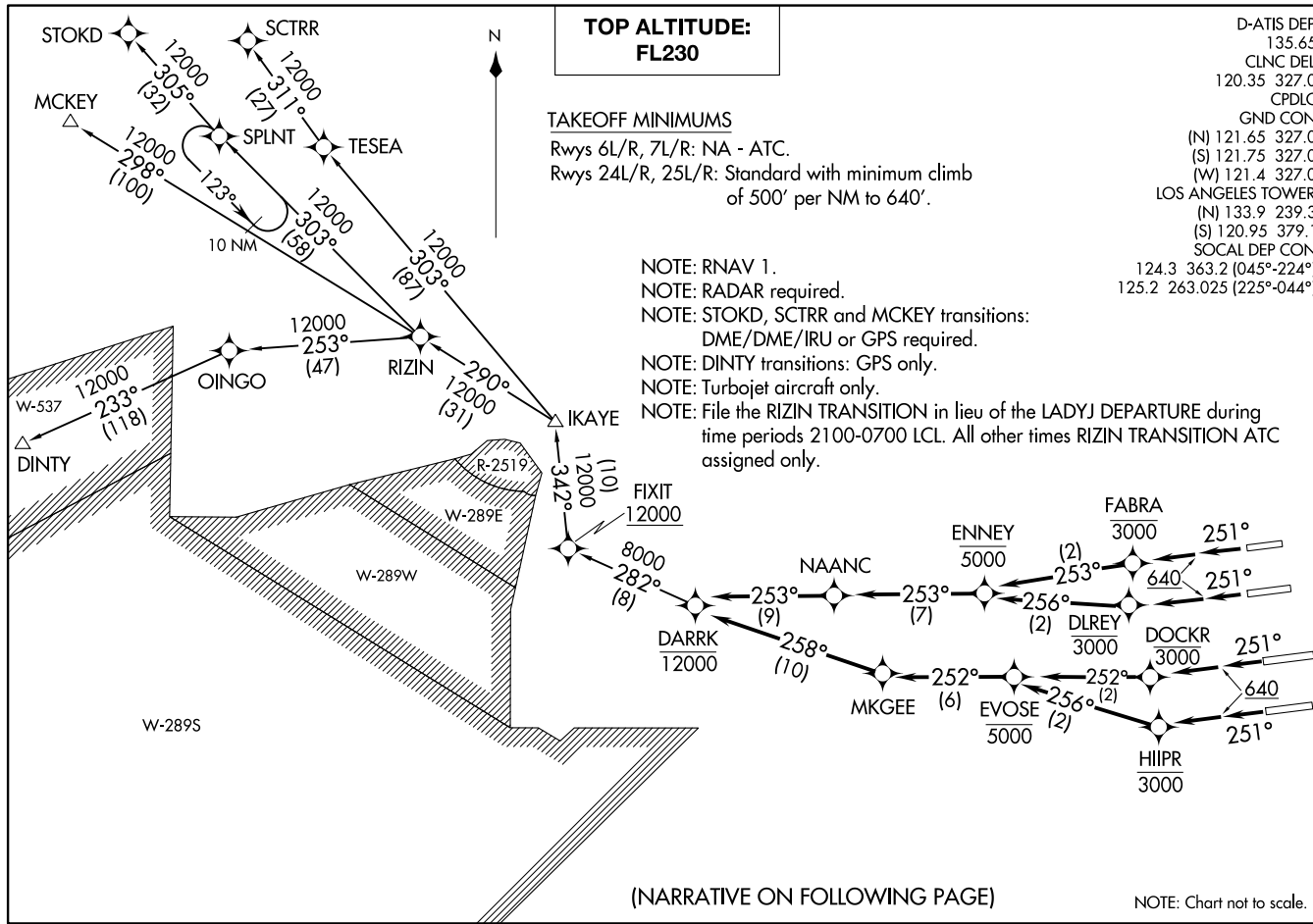


DARRK THREE DEPARTURE (RNAV)  
(DARRK3.DARRK) 100CTT9

LOS ANGELES, CALIFORNIA  
LOS ANGELES INTL (LAX)



D-ATIS DEP 135.65  
CLNC DEL 120.35 327.0  
CPDLC  
GND CON (N) 121.65 327.0  
(S) 121.75 327.0  
(W) 121.4 327.0  
LOS ANGELES TOWER (N) 133.9 239.3  
(S) 120.95 379.1  
SOCAL DEP CON 124.3 363.2 (045°-224°)  
125.2 263.025 (225°-044°)

(DARRK3.DARRK) 19288  
DARRK THREE DEPARTURE (RNAV)

LOS ANGELES INTL (LAX)  
LOS ANGELES, CALIFORNIA

(NARRATIVE ON FOLLOWING PAGE)



DEPARTURE ROUTE DESCRIPTION

TAKEOFF RUNWAY 24L: Climb heading 251° to 640, then climb direct to cross DLREY at or below 3000, then on track 256° to cross ENNEY at or below 5000, then on track 253° to NAANC, then on track 253° to cross DARRK at or below 12000, thence. . . .

TAKEOFF RUNWAY 24R: Climb heading 251° to 640, then climb direct to cross FABRA at or below 3000, then on track 253° to cross ENNEY at or below 5000, then on track 253° to NAANC, then on track 253° to cross DARRK at or below 12000, thence. . . .

TAKEOFF RUNWAY 25L: Climb heading 251° to 640, then climb direct to cross HIIPR at or below 3000, then on track 256° to cross EVOSE at or below 5000, then on track 252° to MKGEE, then on track 258° to cross DARRK at or below 12000, thence. . . .

TAKEOFF RUNWAY 25R: Climb heading 251° to 640, then climb direct to cross DOCKR at or below 3000, then on track 252° to cross EVOSE at or below 5000, then on track 252° to MKGEE, then on track 258° to cross DARRK at or below 12000, thence. . . .

. . . .on (transition) maintain FL230. Expect filed altitude 5 minutes after departure.

DINTY TRANSITION (DARRK3.DINTY)

MCKEY TRANSITION (DARRK3.MCKEY)

RIZIN TRANSITION (DARRK3.RIZIN)

SCTRR TRANSITION (DARRK3.SCTRR)

STOKD TRANSITION (DARRK3.STOKD)

SW-3, 28 NOV 2024 to 26 DEC 2024

SW-3, 28 NOV 2024 to 26 DEC 2024