

LOC/DME I-OSS 108.5 Chan 22	APP CRS 251°	Rwy Idg 8926 TDZE 122 Apt Elev 128
---	------------------------	---

ILS RWY 24R (CAT II & III)

LOS ANGELES INTL (LAX)

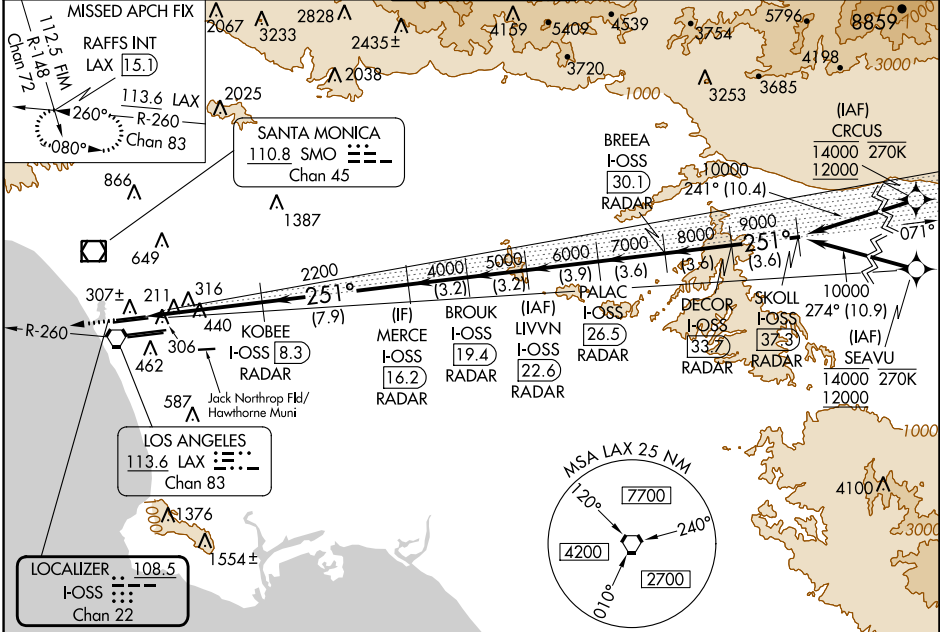
From CRCUS, SEAVU: RNAV 1-GPS required. DME or RADAR required.

Simultaneous approach authorized with HHR.
Simultaneous approach authorized.



MISSED APPROACH: Climb to 2000 on heading 251° and LAX VORTAC R-260 to RAFFS INT/LAX 15.1 DME and hold.

D-ATIS ARR 133.8 DEP 135.65	SOCAL APP CON 124.3 363.2 124.9 269.0 (APCH FM WEST) (090°-224°) 124.5 235.975 128.5 360.7 (225°-044°) (045°-089°)	LOS ANGELES TOWER N 133.9 239.3 S 120.95 379.1	GND CON N 121.65 327.0 S 121.75 327.0 W 121.4 327.0	CLNC DEL 120.35 327.0	CPDLC
---	--	--	---	---	-------



SW-3, 28 NOV 2024 to 26 DEC 2024

SW-3, 28 NOV 2024 to 26 DEC 2024

ELEV 128 TDZE 122	2000 ↑ hdg 251°	LAX R-260	RAFFS INT	VGSI and ILS glidepath not coincident (VGSI Angle 3.00/TCH 73).	DECOR I-OSS 33.7 (3.6) RADAR	SKOLL I-OSS 37.3 (10.9) RADAR	