

LOC/DME I-HQB 111.7 Chan 54	APP CRS 251°	Rwy Idg TDZE Apt Elev	24L 9483 123 128	24R 8926 122 128
---	------------------------	-----------------------------	--	--

ILS or LOC RWY 24L

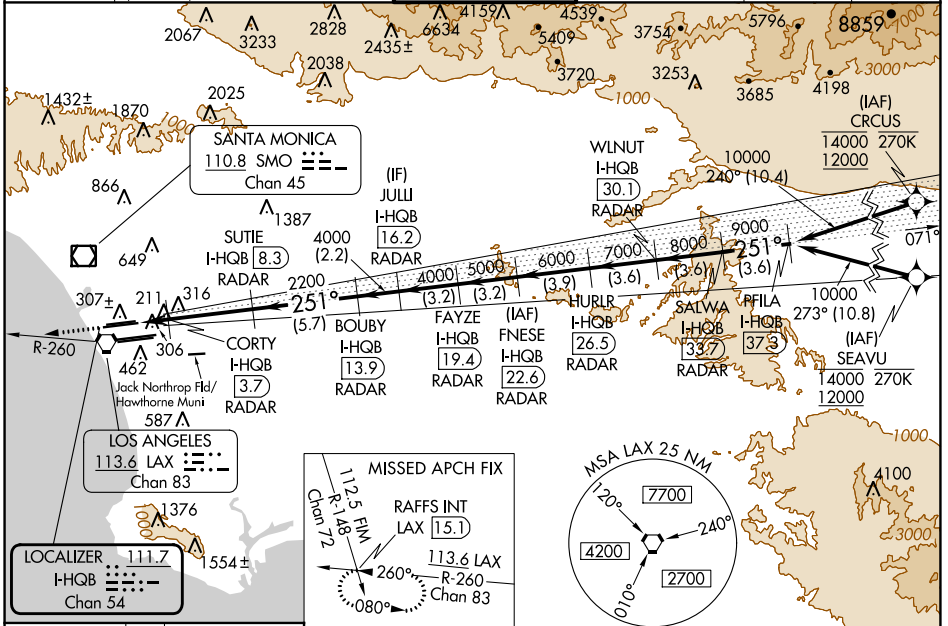
LOS ANGELES INTL (LAX)

RNAV 1-GPS or RADAR required for procedure entry. DME or RADAR required.
From CRCUS: RNAV 1-GPS required. From SEAVU: RNAV 1-GPS required.

▼ Simultaneous approach authorized with HHR. Inop table does not apply to Sidestep Rwy 24R Cat A and B. Simultaneous approach authorized. LOC procedure NA during simultaneous operations with HHR LOC RWY 25. For inop ALS, increase Sidestep 24R Cat C visibility to 1½SM. For inop ALS, increase S-LOC 24L Cat C/D visibility to RVR 5500. #RVR 1800 authorized with use of FD or AP or HUD to DA.

MALSR Rwy 24L 	ALSIF-2 Rwy 24R 	MISSED APPROACH: Climb to 2000 on heading 251° and LAX VORTAC R-260 to RAFFS INT/LAX 15.1 DME and hold.
----------------------	------------------------	--

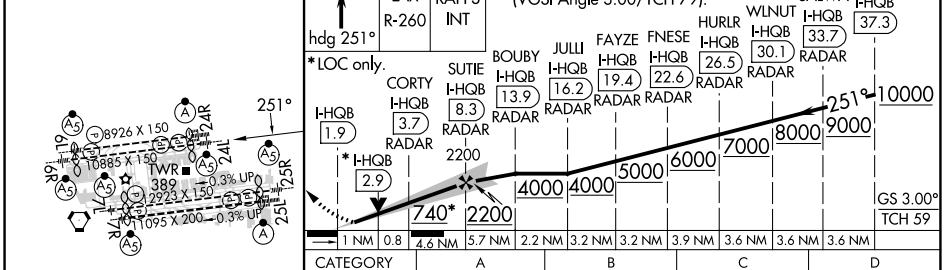
D-ATIS ARR 133.8 DEP 135.65	SOCAL APP CON 124.3 363.2 [APCH FM WEST] 124.5 235.975 [225°-044°]	124.9 269.0 [090°-224°] 128.5 360.7 [045°-089°]	LOS ANGELES TOWER N 133.9 239.3 S 120.95 379.1	GND CON N 121.65 327.0 S 121.75 327.0 W 121.4 327.0	CLNC DEL 120.35 327.0	CPDLC
---	--	--	--	---	---	-------



SW-3, 28 NOV 2024 to 26 DEC 2024

SW-3, 28 NOV 2024 to 26 DEC 2024

ELEV 128	TDZE 24L 123	TDZE 24R 122
----------	--------------	--------------



TDZ/CL Rwy 6L, 7L, 24R, and 25L	HIRL all Rwy	FAF to MAP 6.4 NM			
Knots Min:Sec	60 6:24	90 4:16	120 3:12	150 2:34	180 2:08
S-ILS 24L#	323/24 200 (200-½)				
S-LOC 24L	500/24 377 (400-½)		500/35 377 (400-¾)		
SIDESTEP 24R	500/55 378 (400-1)			500-1½ 378 (400-1½)	