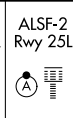
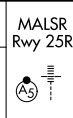


LOC/DME I-FCN <b>111.1</b> Chan 48	APP CRS <b>251°</b>	Rwy ldg <b>1134</b>	25R <b>11095</b>	25L <b>11095</b>
		TDZE <b>104</b>	<b>104</b>	<b>104</b>
		Apt Elev <b>128</b>	<b>128</b>	<b>128</b>

# ILS or LOC RWY 25R

LOS ANGELES INTL (LAX)

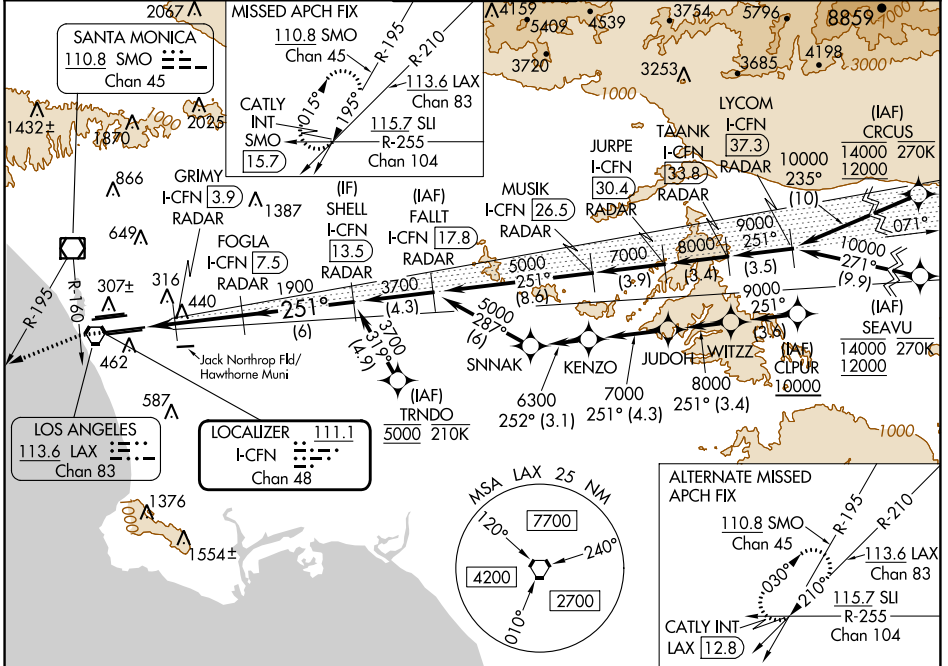
From CRCUS, SEAVU, TRNDO, CLPUR: RNAV 1-GPS required.  
DME or RADAR required.



**MISSED APPROACH:** Climb to 2000 on heading 251° until crossing SMO R-160 then left turn on heading 236° and SMO VOR/DME R-195 to CATLY INT/SMO 15.7 DME and hold.

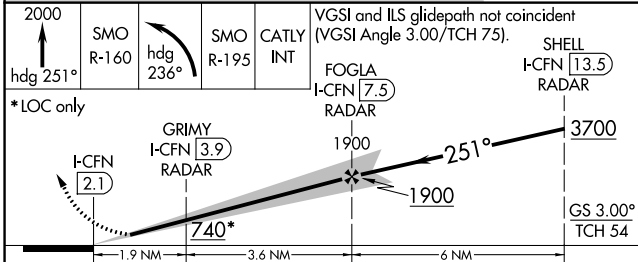
Simultaneous approach authorized. Simultaneous approach authorized with HHR. For inop ALS increase Sidestep 25L Cat C visibility to 1½ SM. #RVR 1800 authorized with use of FD or AP or HUD to DA.

D-ATIS ARR <b>133.8</b> DEP <b>135.65</b>	SOCAL APP CON <b>124.3 363.2</b> <small>(ARCFM WEST)</small>	SOCAL APP CON <b>124.9 269.0</b> <small>(090°-224°)</small>	LOS ANGELES TOWER <b>N 133.9 239.3</b> <b>S 120.95 379.1</b>	GND CON <b>N 121.65 327.0</b> <b>S 121.75 327.0</b> <b>W 121.4 327.0</b>	CLNC DEL <b>120.35</b> <b>327.0</b>	CPDLC
---	--	---	--	---	---	-------



SW-3, 28 NOV 2024 to 26 DEC 2024

SW-3, 28 NOV 2024 to 26 DEC 2024



CATEGORY	A	B	C	D
S-ILS 25R#	304/24		200 (200-½)	
S-LOC 25R	700/24	596 (600-½)	700-1¼	596 (600-1¼)
SIDESTEP 25L	700/55	596 (600-1)	700-1¼	700-1½
			596 (600-1¼)	596 (600-1½)

ELEV 128 **D** TDZE 25R 104  
TDZE 25L 104

ALTERNATE MISSED APCH FIX

110.8 SMO Chan 45  
113.6 LAX Chan 83  
115.7 SLI R-255 Chan 104  
CATLY INT-LAX [12.8]

MSA LAX 25 NM  
7700  
4200  
2700

GS 3.00°  
TCH 54

TDZ/CL Rwyys 6R, 7L, 24R, and 25L	
HIRL all Rwyys	
FAF to MAP 5.5 NM	
Knots	60 90 120 150 180
Min:Sec	5:30 3:40 2:45 2:12 1:50