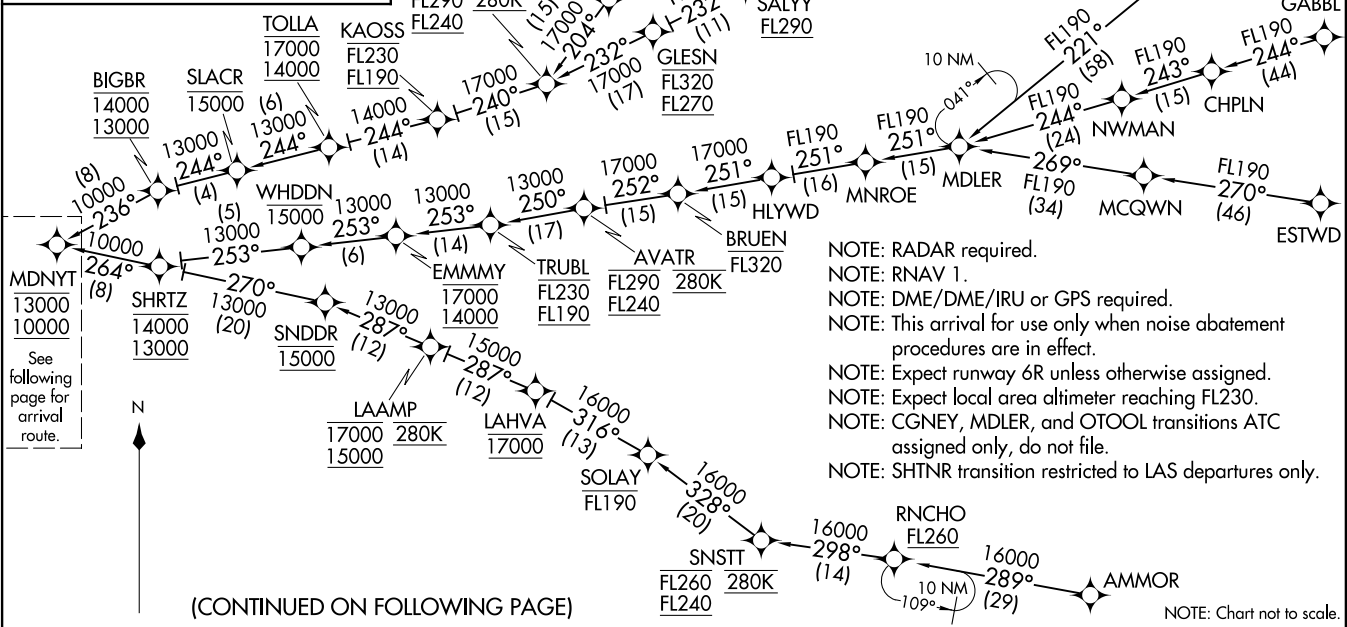


MDNYT TWO ARRIVAL (RNAV) Transition Routes  
(MDNYT.MDNYT2) 120CT17  
LOS ANGELES, CALIFORNIA  
LOS ANGELES INTL (LAX)

- AMMOR TRANSITION (AMMOR.MDNYT2)
- CGNEY TRANSITION (CGNEY.MDNYT2)
- DNERO TRANSITION (DNERO.MDNYT2)
- ESTWD TRANSITION (ESTWD.MDNYT2)
- FNND A TRANSITION (FNND A.MDNYT2)
- GABBL TRANSITION (GABBL.MDNYT2)
- HAKMN TRANSITION (HAKMN.MDNYT2)
- MDLER TRANSITION (MDLER.MDNYT2)
- OTOOL TRANSITION (OTOOL.MDNYT2)
- SHTNR TRANSITION (SHTNR.MDNYT2)

SOCAL APP CON  
124.05 353.775  
D-ATIS ARR  
133.8  
LOS ANGELES TOWER  
(N) 133.9 239.3  
(S) 120.95 379.1



- NOTE: RADAR required.
- NOTE: RNAV 1.
- NOTE: DME/DME/IRU or GPS required.
- NOTE: This arrival for use only when noise abatement procedures are in effect.
- NOTE: Expect runway 6R unless otherwise assigned.
- NOTE: Expect local area altimeter reaching FL230.
- NOTE: CGNEY, MDLER, and OTOOL transitions ATC assigned only, do not file.
- NOTE: SHTNR transition restricted to LAS departures only.

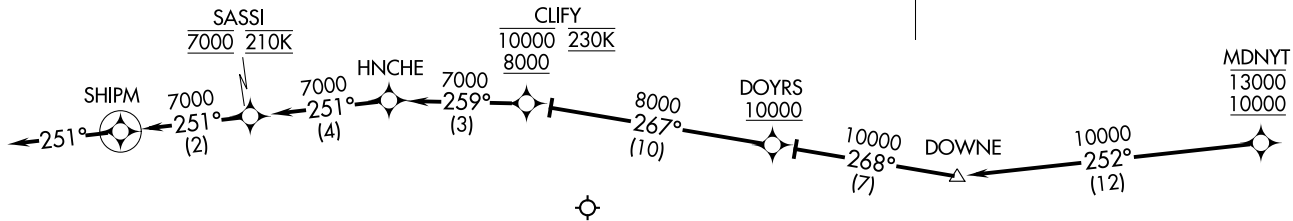
(CONTINUED ON FOLLOWING PAGE)

NOTE: Chart not to scale.

(MDNYT.MDNYT2) 17285  
AL-237 (FAAI)  
LOS ANGELES INTL (LAX)  
LOS ANGELES, CALIFORNIA

MDNYT TWO ARRIVAL (RNAV) Arrival Routes  
 (MDNYT,MDNYT2) 120CT17

SOCAL APP CON  
 124.05 353.775  
 D-ATIS ARR  
 133.8  
 LOS ANGELES TOWER  
 (N) 133.9 239.3  
 (S) 120.95 379.1



- NOTE: RADAR required.
- NOTE: RNAV 1.
- NOTE: DME/DME/IRU or GPS required.
- NOTE: This arrival for use only when noise abatement procedures are in effect.
- NOTE: Expect runway 6R unless otherwise assigned.
- NOTE: Expect local area altimeter reaching FL230.

NOTE: Chart not to scale.

ARRIVAL ROUTE DESCRIPTION

LANDING RUNWAYS 6L/R: From MDNYT on track 252° to DOWNE, then on track 268° to cross DOYRS at or above 10000, then on track 267° to cross CLIFY between 8000 and 10000 and at 230K, then on track 259° to HNCHE, then on track 251° to cross SASSI at 7000 and at 210K, then on track 251° to SHIPM, then on track 251°. Expect RADAR vectors to ILS or RNAV (RNP) RWY 6R final approach course.

LOST COMMUNICATIONS: In the event of lost communication proceed on the RNAV (RNP) RWY 6R or ILS or LOC RWY 6R approach.

LOS ANGELES, CALIFORNIA  
 LOS ANGELES INTL (LAX)

(MDNYT,MDNYT2) 17285  
 MDNYT TWO ARRIVAL (RNAV) Arrival Routes

AL-237 (FAA)  
 LOS ANGELES INTL (LAX)  
 LOS ANGELES, CALIFORNIA