

**TOP ALTITUDE:
17000**

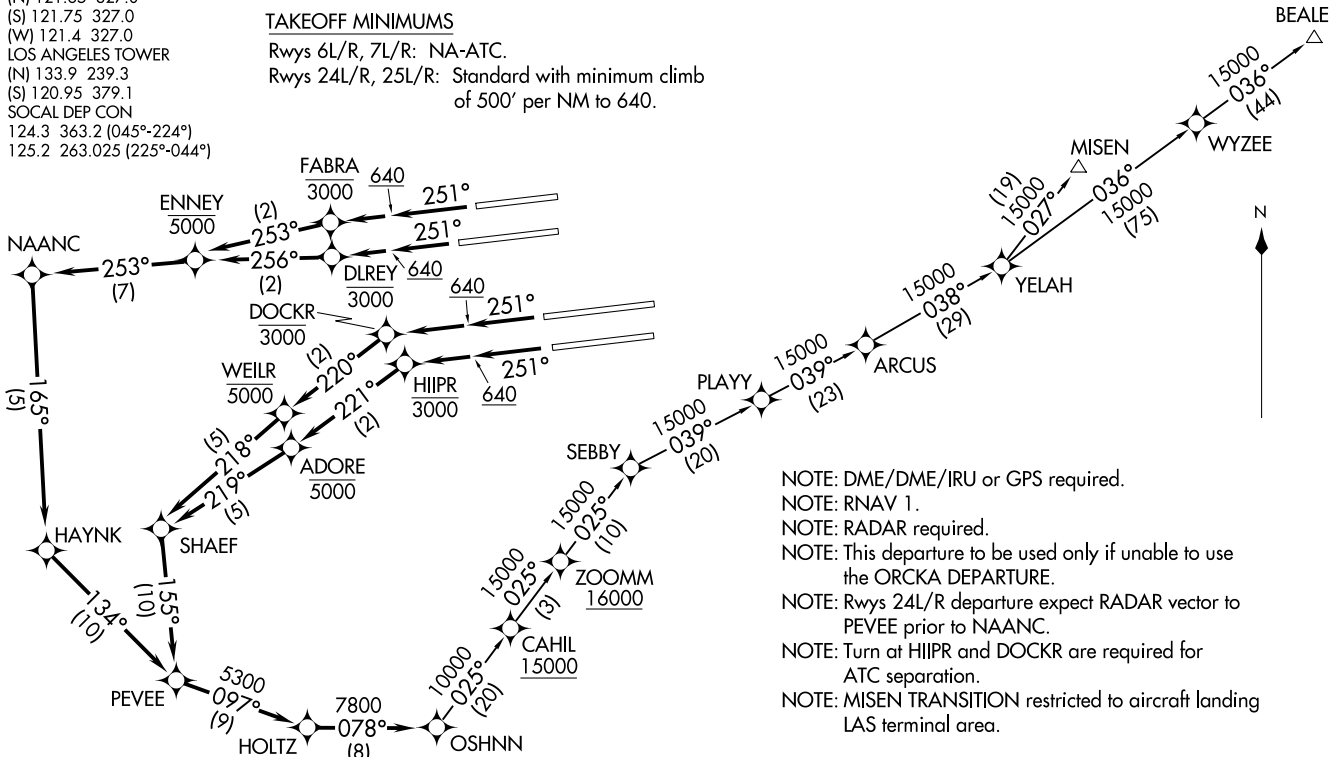
TAKEOFF MINIMUMS

Rwys 6L/R, 7L/R: NA-ATC.
Rwys 24L/R, 25L/R: Standard with minimum climb
of 500' per NM to 640.

D-ATIS DEP
135.65
CLNC DEL
120.35 327.0
CPDLC
GND CON
(N) 121.65 327.0
(S) 121.75 327.0
(W) 121.4 327.0
LOS ANGELES TOWER
(N) 133.9 239.3
(S) 120.95 379.1
SOCAL DEP CON
124.3 363.2 (045°-224°)
125.2 263.025 (225°-044°)

OSHNN ONE DEPARTURE (RNAV)
(OSHNN1, OSHNN) 17JUN21

LOS ANGELES, CALIFORNIA
LOS ANGELES INTL (LAX)



- NOTE: DME/DME/IRU or GPS required.
- NOTE: RNAV 1.
- NOTE: RADAR required.
- NOTE: This departure to be used only if unable to use the ORCA DEPARTURE.
- NOTE: Rwys 24L/R departure expect RADAR vector to PEVEE prior to NAANC.
- NOTE: Turn at HIIPR and DOCKR are required for ATC separation.
- NOTE: MISEN TRANSITION restricted to aircraft landing LAS terminal area.

(NARRATIVE ON FOLLOWING PAGE)

NOTE: Chart not to scale.

OSHNN ONE DEPARTURE (RNAV)
(OSHNN1, OSHNN) 21188

AL-237 (FAA)

LOS ANGELES, CALIFORNIA
LOS ANGELES INTL (LAX)



DEPARTURE ROUTE DESCRIPTION

TAKEOFF RUNWAY 24L: Climb on heading 251° to 640, then climb direct to cross DLREY at or below 3000, then on track 256° to cross ENNEY at or below 5000, then on depicted route to OSHNN, thence. . . .

TAKEOFF RUNWAY 24R: Climb on heading 251° to 640, then climb direct to cross FABRA at or below 3000, then on track 253° to cross ENNEY at or below 5000, then on depicted route to OSHNN, thence. . . .

TAKEOFF RUNWAY 25L: Climb on heading 251° to 640, then climb direct to cross HIIPR at or below 3000, then on track 221° to cross ADORE at or below 5000, then on depicted route to OSHNN, thence. . . .

TAKEOFF RUNWAY 25R: Climb on heading 251° to 640, then climb direct to cross DOCKR at or below 3000, then on track 220° to cross WEILR at or below 5000, then on depicted route to OSHNN, thence. . . .

. . . .on (transition). Maintain 17000. Expect filed altitude five minutes after departure.

BEALE TRANSITION (OSHNN1.BEALE)

MISEN TRANSITION (OSHNN1.MISEN)

SW-3, 28 NOV 2024 to 26 DEC 2024

SW-3, 28 NOV 2024 to 26 DEC 2024