

# PERCH THREE DEPARTURE

AL-237 (FAA)

LOS ANGELES INTL (LAX)  
LOS ANGELES, CALIFORNIA

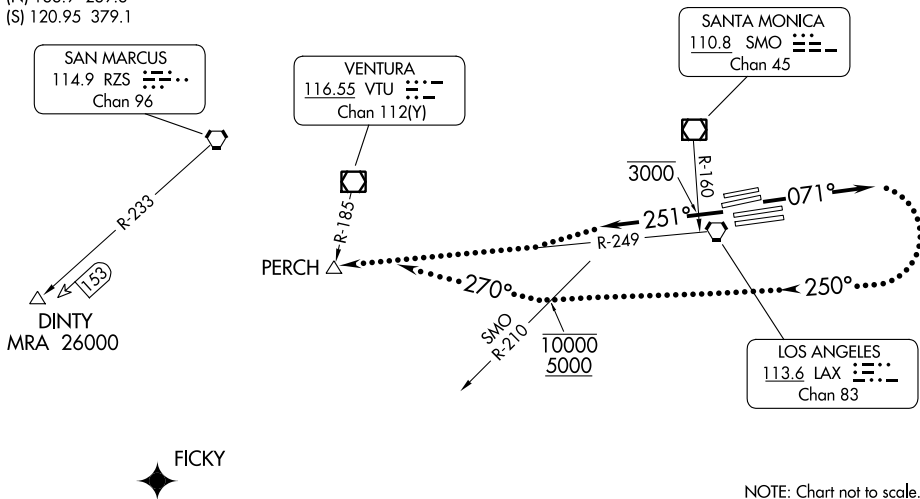
SOCAL DEP CON  
 124.3 363.2 (045°-224°)  
 125.2 263.025 (225°-044°)  
 D-ATIS DEP  
 135.65  
 CLNC DEL  
 120.35 327.0  
 CPDLC  
 GND CON  
 (N) 121.65 327.0  
 (S) 121.75 327.0  
 (W) 121.4 327.0  
 LOS ANGELES TOWER  
 (N) 133.9 239.3  
 (S) 120.95 379.1

### TAKEOFF MINIMUMS

Rwys 6L/R, 7L/R, 24L/R, 25L/R: Standard.

**TOP ALTITUDE:  
ASSIGNED BY ATC**

NOTE: RADAR and DME required.  
 NOTE: Route depicted is a LOST COMMUNICATION PROCEDURE only.



NOTE: Chart not to scale.

### DEPARTURE ROUTE DESCRIPTION

**TAKEOFF RUNWAYS 6L/R, 7L/R:** Climb on heading 071° for RADAR vectors to DINTY or FICKY, thence. . . .

**TAKEOFF RUNWAYS 24L/R, 25L/R:** Climb on heading 251° to cross SMO R-160 at or below 3000, then on RADAR vectors to DINTY or FICKY, thence. . . .

. . . .on (assigned route). All aircraft expect further clearance to filed altitude 5 minutes after departure.

### LOST COMMUNICATIONS:

**TAKEOFF RUNWAYS 6L/R, 7L/R:** If not in contact with Departure Control within 3 minutes after departure, turn right heading 250°, cross SMO R-210 at or above 5000 and at or below 10000. After leaving 10000, turn right heading 270° to intercept and proceed on LAX R-249 to PERCH INT. Climb to FL230 or filed altitude whichever is lower. Aircraft filing FL240 or above climb to filed altitude 10 minutes after departure.

**TAKEOFF RUNWAYS 24L/R, 25L/R:** If not in contact with Departure Control within 5 minutes after departure, proceed to PERCH INT on LAX R-249. Climb to FL230 or filed altitude whichever is lower. Aircraft filing FL240 or above climb to filed altitude 10 minutes after departure.

# PERCH THREE DEPARTURE

SW-3, 28 NOV 2024 to 26 DEC 2024

SW-3, 28 NOV 2024 to 26 DEC 2024