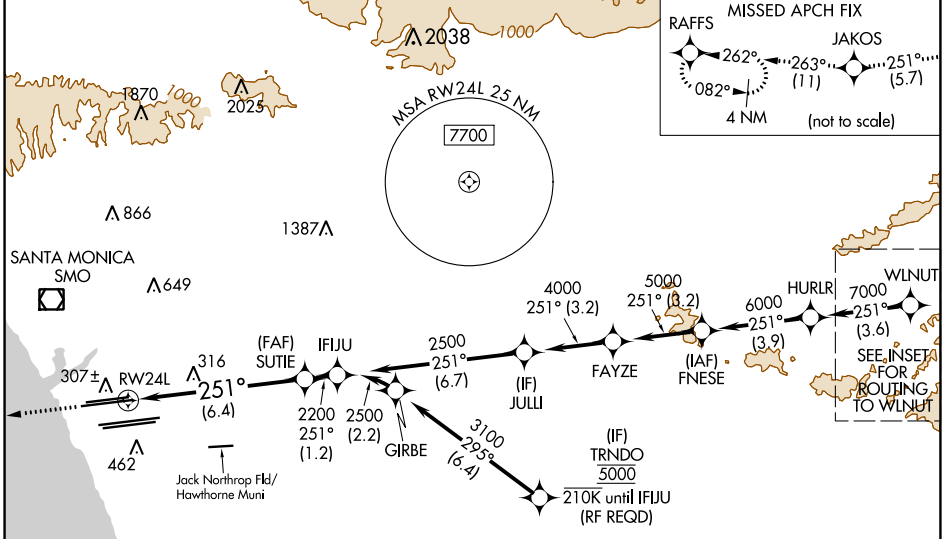


APP CRS	Rwy Idg	<b>9483</b>
<b>251°</b>	TDZE	<b>123</b>
	Apt Elev	<b>128</b>

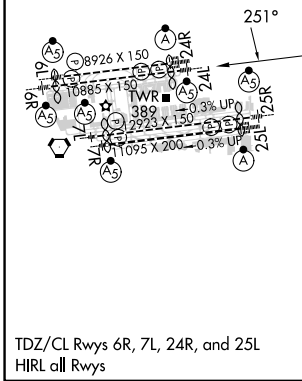
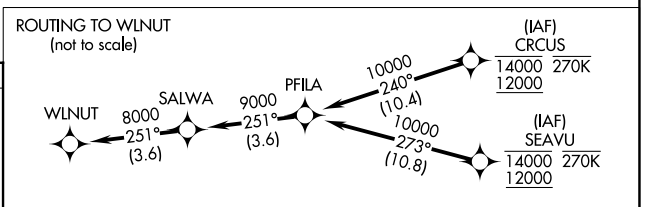
# RNAV (RNP) Z RWY 24L

LOS ANGELES INTL (LAX)

<b>RNP AR APCH.</b> Simultaneous approach authorized. Simultaneous approach authorized with HHR. For uncompensated Baro-VNAV systems, procedure NA below 5°C or above 54°C. For inop ALS, increase RNP 0.15 all Cats visibility to 1 3/8 SM.		MALSR 	MISSED APPROACH: Climb to 2000 on track 251° to JAKOS and track 263° to RAFFS and hold.			
D-ATIS ARR <b>133.8</b> DEP <b>135.65</b>	SOCAL APP CON <b>124.3 363.2</b> (APCH FM WEST) (225°-044°)	<b>124.9 269.0</b> (090°-224°)	LOS ANGELES TOWER <b>N 133.9 239.3</b> <b>S 120.95 379.1</b>	GND CON <b>N 121.65 327.0</b> <b>S 121.75 327.0</b> <b>W 121.4 327.0</b>	CLNC DEL <b>120.35</b> <b>327.0</b>	CPDLC



ELEV 128	<b>D</b>	TDZE 123
----------	----------	----------



2000	JAKOS	fr 263°	RAFFS	See planview for multiple IF locations.
tr 251°				
VGSI and RNAV glidepath not coincident (VGSI Angle 3.00/TCH 79).				
RWY 24L				
GP 3.00° TCH 59				
CATEGORY	A	B	C	D
RNP 0.15 DA		545/35	422 (500-5%)	
RNP 0.30 DA		592/45	469 (500-7%)	

**AUTHORIZATION REQUIRED**

SW-3, 28 NOV 2024 TO 26 DEC 2024

SW-3, 28 NOV 2024 TO 26 DEC 2024