


| | |
|------------------------|------------------------|
| APP CRS 071° | Rwy Idg 8566 |
| | TDZE 119 |
| | Apt Elev 128 |

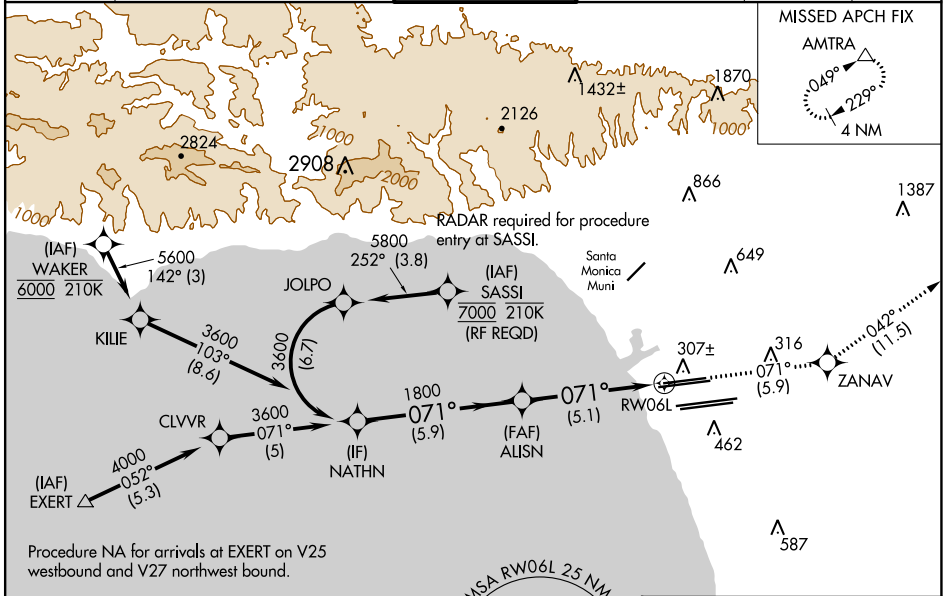
RNAV (RNP) Z RWY 6L

LOS ANGELES INTL (LAX)

▼ For uncompensated Baro-VNAV systems, procedure NA below 5°C (41°F) or above 54°C (130°F). Simultaneous approach authorized. GPS required. For inop MALSR, increase RNP 0.30 all Cats visibility to RVR 6000.

MALSR

MISSED APPROACH: Climb to 3000 on track 071° to ZANAV and on track 042° to AMTRA and hold.

| | | | | | | |
|---|--|-----------------------------------|--|---|---|-------|
| D-ATIS ARR 133.8 DEF 135.65 | SOCAL APP CON 124.3 363.2 (APCH FM WEST) 124.5 235.975 (225°-044°) | 124.9 269.0 (090°-224°) | LOS ANGELES TOWER N 133.9 239.3 S 120.95 379.1 | GND CON N 121.65 327.0 S 121.75 327.0 W 121.4 327.0 | CLNC DEL 120.35 327.0 | CPDLC |
|---|--|-----------------------------------|--|---|---|-------|

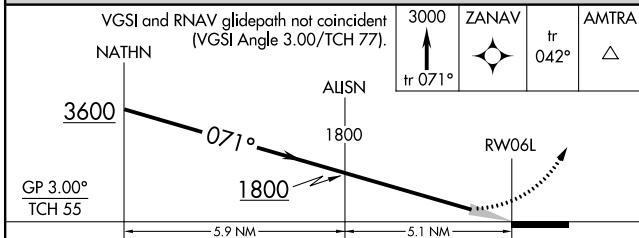


SW-3, 28 NOV 2024 to 26 DEC 2024

SW-3, 28 NOV 2024 to 26 DEC 2024

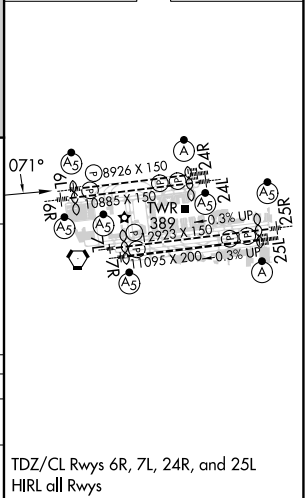
Procedure NA for arrivals at EXERT on V25 westbound and V27 northwest bound.

| | |
|----------|-------------------|
| ELEV 128 | D TDZE 119 |
|----------|-------------------|



| | | | | |
|-------------|---|--------|-------------|---|
| CATEGORY | A | B | C | D |
| RNP 0.30 DA | | 484/40 | 365 (400-¾) | |

AUTHORIZATION REQUIRED



TDZ/CL Rwy's 6R, 7L, 24R, and 25L
HIRL all Rwy's