

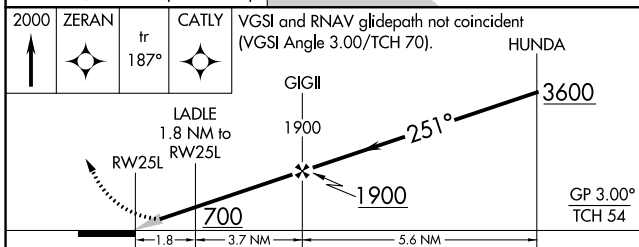
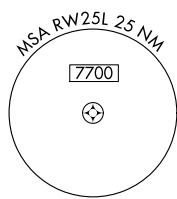
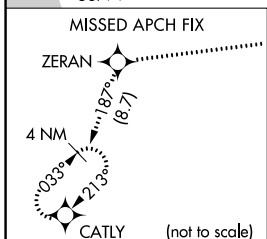
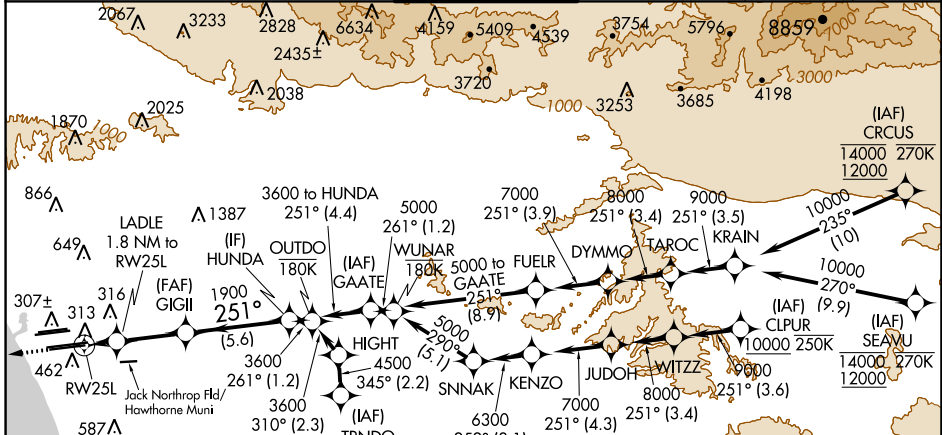
WAAS CH <b>53507</b> <b>W25A</b>	APP CRS <b>251°</b>	Rwy Idg <b>11095</b> TDZE <b>104</b> Apt Elev <b>128</b>
--	------------------------	--

# RNAV (GPS) Y RWY 25L

LOS ANGELES INTL (LAX)

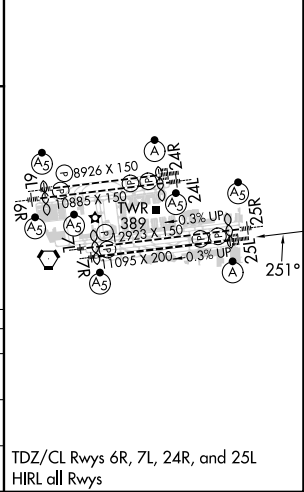
RNP APCH - GPS.	ALSF-2	MISSED APPROACH: Climb to 2000 direct ZERAN and on track 187° to CATLY and hold.
<p>▼ For uncompensated Baro-VNAV systems, LNAV/VNAV NA below 5°C or above 54°C. Simultaneous approach authorized. Simultaneous approach authorized with HHR 25. For inop ALS, increase LNAV/VNAV all Cats visibility to RVR 5500, LNAV Cat C/D visibility to 1 3/8 SM. LNAV procedure NA during simultaneous operations. Use of FD or AP required during simultaneous operations.</p>		

D-ATIS ARR <b>133.8</b> DEP <b>135.65</b>	SOCAL APP CON <b>124.3 363.2</b> [APCH FM WEST] <b>124.5 235.975</b> [225°-044°]	<b>124.9 269.0</b> (090°-224°) <b>128.5 360.7</b> [045°-089°]	LOS ANGELES TOWER <b>N 133.9 239.3</b> <b>S 120.95 379.1</b>	GND CON <b>N 121.65 327.0</b> <b>S 121.75 327.0</b> <b>W 121.4 327.0</b>	CLNC DEL <b>120.35</b> <b>327.0</b>	CPDLC
---	--	--	--	---	---	-------



CATEGORY	A	B	C	D
LPV DA		304/18	200 (200-1/2)	
LNAV/VNAV DA		479/35	375 (400-3/8)	
LNAV MDA	580/24	476 (500-1/2)	580/50	476 (500-1)

ELEV 128	TDZE 104
----------	----------



SW-3, 28 NOV 2024 to 26 DEC 2024

SW-3, 28 NOV 2024 to 26 DEC 2024