


WAAS CH 82507 W06A	APP CRS 071°	Rwy Idg 8566 TDZE 119 Apt Elev 128
--	------------------------	---

RNAV (GPS) Y RWY 6L

LOS ANGELES INTL (LAX)

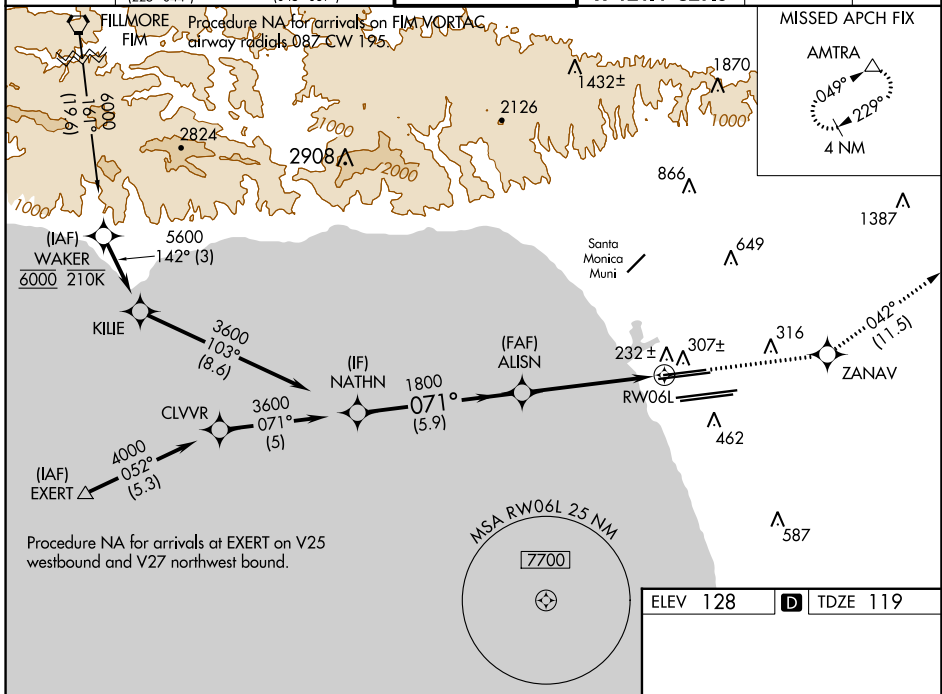
▽ For uncompensated Baro-VNAV systems, LNAV/VNAV NA below 5°C (41°F) or above 54°C (130°F). DME/DME RNP-0.3 NA. LNAV procedure NA during simultaneous operations. Use of FD or AP providing RNAV track guidance required during simultaneous operations. Simultaneous approach authorized.

MALSR



MISSED APPROACH: Climb to 3000 direct ZANAV and track 042° to AMTRA and hold.

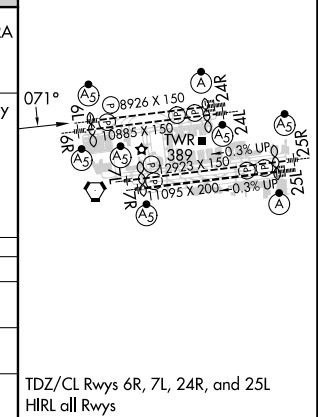
D-ATIS ARR 133.8 DEP 135.65	SOCAL APP CON 124.3 363.2 (APCH FM WEST) 124.5 235.975 (223°-044°)	124.9 269.0 (090°-224°) 128.5 360.7 (043°-089°)	LOS ANGELES TOWER N 133.9 239.3 S 120.95 379.1	GND CON N 121.65 327.0 S 121.75 327.0 W 121.4 327.0	CLNC DEL 120.35 327.0	CPDLC
---	--	--	--	---	---	-------



Procedure NA for arrivals at EXERT on V25 westbound and V27 northwest bound.

Procedure NA for arrivals on FLM VORTAC airway radials 087 CW 195.

VGSi and RNAV glidepath not coincident (VGSi Angle 3.00/TCH 77).			
NATHN	ALISN	ZANAV	AMTRA
3600	1800	3000	3000
GP 3.00°		tr 042°	
TCH 55		* 1 NM to RWY 06L	
			* INAV only
	5.9 NM	4.1 NM	1 NM
CATEGORY	A	B	C
LPV DA		369/24	250 (300-½)
LNAV/VNAV DA		411/24	292 (300-½)
LNAV MDA	500/24	381 (400-½)	500/35 381 (400-¾)



SW-3, 28 NOV 2024 to 26 DEC 2024

SW-3, 28 NOV 2024 to 26 DEC 2024