

WAAS CH 42504 W07A	APP CRS 071°	Rwy Idg 11259 TDZE 128 Apt Elev 128
--	------------------------	--

RNAV (GPS) Y RWY 7L

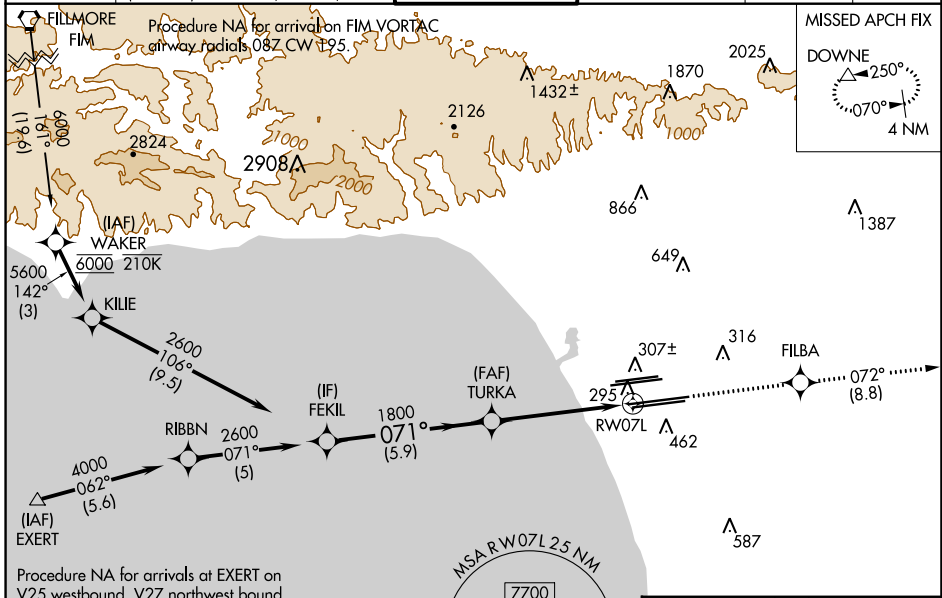
LOS ANGELES INTL (LAX)

▼ For uncompensated Baro-VNAV systems, LNAV/VNAV NA below 5°C (41°F) or above 54°C (130°F). DME/DME RNP -0.3 NA. LNAV procedure NA during simultaneous operations. Use of FD or AP providing RNAV track guidance required during simultaneous operations. Simultaneous approach authorized.



MISSED APPROACH: Climb to 3000 direct FILBA and on track 072° to DOWNE and hold.

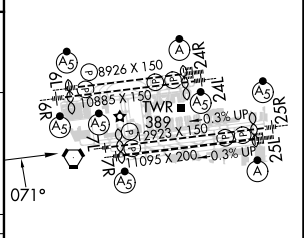
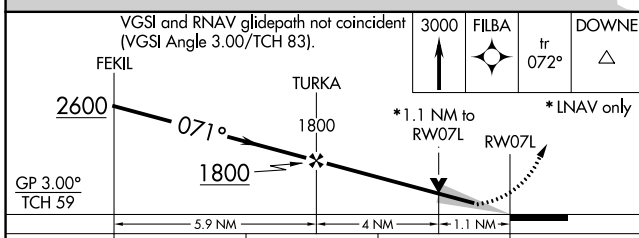
D-ATIS ARR 133.8 DEP 135.65	SOCAL APP CON 124.3 363.2 124.9 269.0 (APCH FM WEST) (090°-224°) 124.5 235.975 128.5 360.7 (225°-044°) (045°-089°)	LOS ANGELES TOWER N 133.9 239.3 S 120.95 379.1	GND CON N 121.65 327.0 S 121.75 327.0 W 121.4 327.0	CLNC DEL 120.35 327.0	CPDLC
---	--	--	---	---	-------



SW-3, 28 NOV 2024 to 26 DEC 2024

SW-3, 28 NOV 2024 to 26 DEC 2024

ELEV 128	D TDZE 128
----------	-------------------



CATEGORY	A	B	C	D
LPV DA		344/18	216 (300-½)	
LNAV/VNAV DA		464/30	336 (400-¾)	
LNAV MDA	560/24	432 (500-½)	560/40	432 (500-¾)

TDZ/CL Rwy's 6R, 7L, 24R, and 25L
HIRL all Rwy's