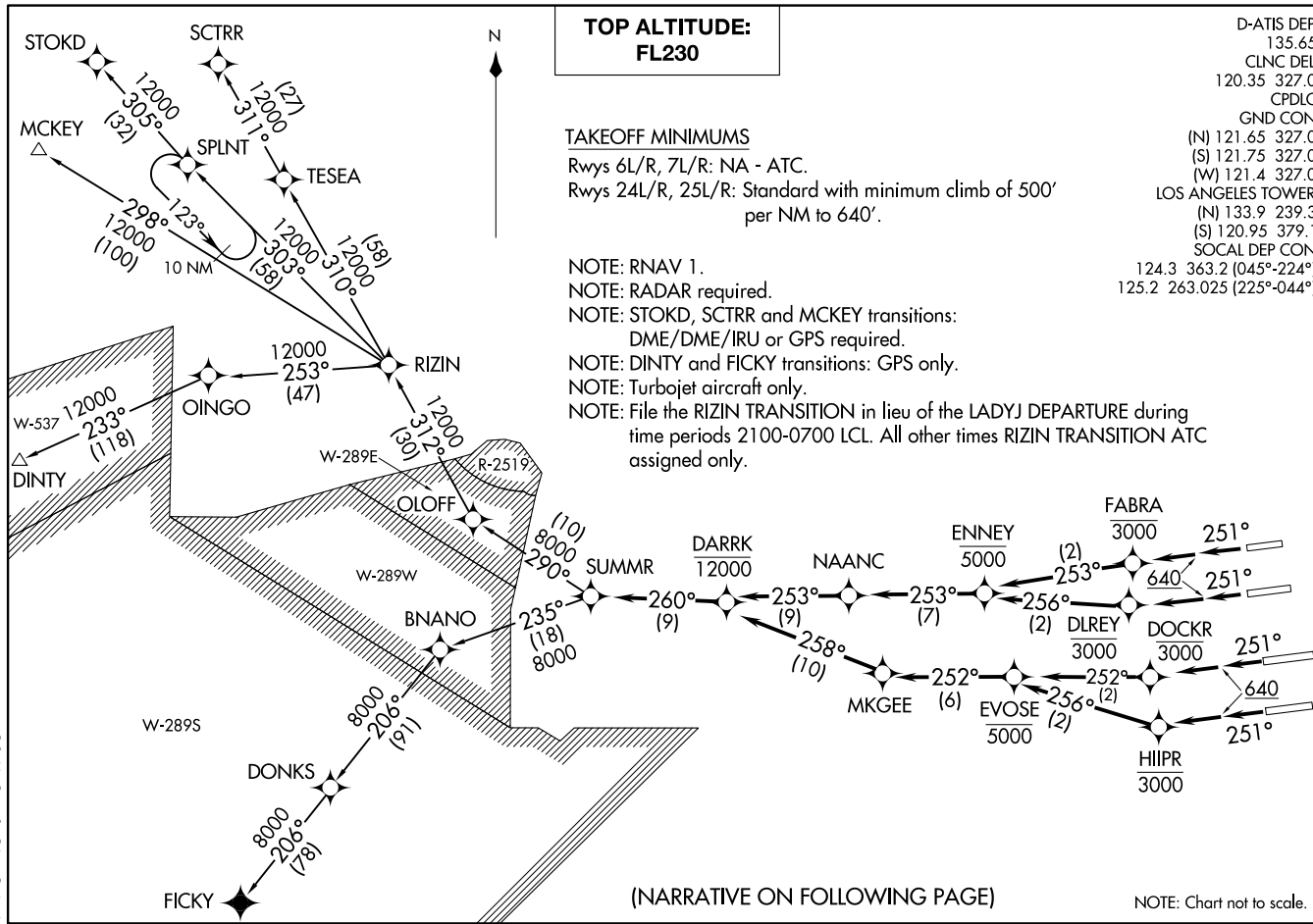


SUMMR TWO DEPARTURE (RNAV)  
(SUMMR2.SUMMR) 100CT19

LOS ANGELES, CALIFORNIA  
LOS ANGELES INTL (LAX)



**TOP ALTITUDE:**  
**FL230**

**TAKEOFF MINIMUMS**

Rwys 6L/R, 7L/R: NA - ATC.

Rwys 24L/R, 25L/R: Standard with minimum climb of 500' per NM to 640'.

NOTE: RNAV 1.

NOTE: RADAR required.

NOTE: STOKD, SCTR and MCKEY transitions: DME/DME/IRU or GPS required.

NOTE: DINTY and FICKY transitions: GPS only.

NOTE: Turbojet aircraft only.

NOTE: File the RIZIN TRANSITION in lieu of the LADYJ DEPARTURE during time periods 2100-0700 LCL. All other times RIZIN TRANSITION ATC assigned only.

D-ATIS DEP 135.65  
 CLNC DEL 120.35 327.0  
 CPDLC  
 GND CON (N) 121.65 327.0  
 (S) 121.75 327.0  
 (W) 121.4 327.0  
 LOS ANGELES TOWER (N) 133.9 239.3  
 (S) 120.95 379.1  
 SOCAL DEP CON 124.3 363.2 (045°-224°)  
 125.2 263.025 (225°-044°)

(SUMMR2.SUMMR) 19283  
SUMMR TWO DEPARTURE (RNAV)

AL-237 (FAA)

LOS ANGELES INTL (LAX)  
LOS ANGELES, CALIFORNIA

(NARRATIVE ON FOLLOWING PAGE)

NOTE: Chart not to scale.



DEPARTURE ROUTE DESCRIPTION

TAKEOFF RUNWAY 24L: Climb heading 251° to 640, then climb direct to cross DLREY at or below 3000, then on track 256° to cross ENNEY at or below 5000, then on track 253° to NAANC, then on track 253° to cross DARRK at or below 12000, then on track 260° to SUMMR, thence. . . .

TAKEOFF RUNWAY 24R: Climb heading 251° to 640, then climb direct to cross FABRA at or below 3000, then on track 253° to cross ENNEY at or below 5000, then on track 253° to NAANC, then on track 253° to cross DARRK at or below 12000, then on track 260° to SUMMR, thence. . . .

TAKEOFF RUNWAY 25L: Climb heading 251° to 640, then climb direct to cross HIIPR at or below 3000, then on track 256° to cross EVOSE at or below 5000, then on track 252° to MKGEE, then on track 258° to cross DARRK at or below 12000, then on track 260° to SUMMR, thence. . . .

TAKEOFF RUNWAY 25R: Climb heading 251° to 640, then climb direct to cross DOCKR at or below 3000, then on track 252° to cross EVOSE at or below 5000, then on track 252° to MKGEE, then on track 258° to cross DARRK at or below 12000, then on track 260° to SUMMR, thence. . . .

. . . .on (transition) maintain FL230. Expect filed altitude 5 minutes after departure.

DINTY TRANSITION (SUMMR2.DINTY)

FICKY TRANSITION (SUMMR2.FICKY)

MCKEY TRANSITION (SUMMR2.MCKEY)

RIZIN TRANSITION (SUMMR2.RIZIN)

SCTRR TRANSITION (SUMMR2.SCTRR)

STOKD TRANSITION (SUMMR2.STOKD)

SW-3, 28 NOV 2024 to 26 DEC 2024

SW-3, 28 NOV 2024 to 26 DEC 2024