

(VTU8.VTU) 23334

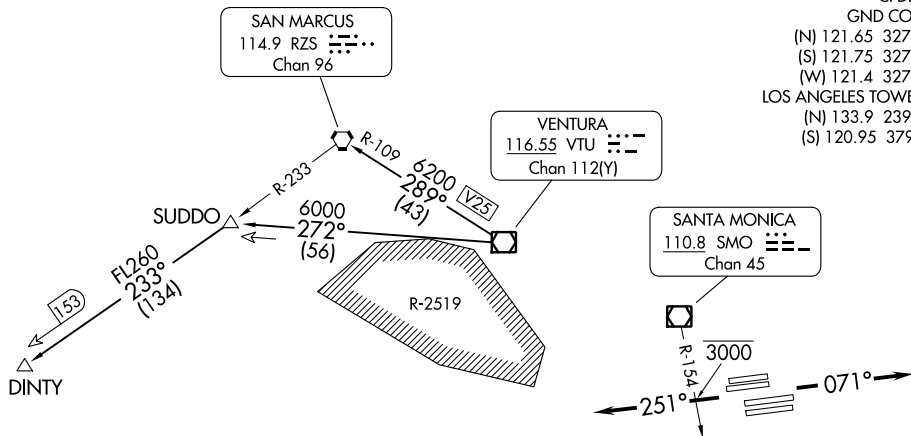
VENTURA EIGHT DEPARTURE

AL-237 (FAA)

LOS ANGELES INTL (LAX)
LOS ANGELES, CALIFORNIA

**TOP ALTITUDE:
ASSIGNED BY ATC**

SOCAL DEP CON
124.3 363.2 (045°-224°)
125.2 263.025 (225°-044°)
D-ATIS DEP
135.65
CLNC DEL
120.35 327.0
CPDLC
GND CON
(N) 121.65 327.0
(S) 121.75 327.0
(W) 121.4 327.0
LOS ANGELES TOWER
(N) 133.9 239.3
(S) 120.95 379.1



TAKEOFF MINIMUMS

Rwys 6L/R, 7L/R, 24L/R, 25L/R: Standard.

NOTE: RADAR required.

NOTE: DINTY Transition: DME required.

NOTE: Chart not scale.

DEPARTURE ROUTE DESCRIPTION

TAKEOFF RUNWAYS 6L/R, 7L/R: Climb on heading 071° for RADAR vectors to VTU VOR/DME, thence. . . .

TAKEOFF RUNWAYS 24L/R, 25L/R: Climb on heading 251° for RADAR vectors to VTU VOR/DME, cross SMO R-154 at or below 3000, thence. . . .

. . . .on (assigned route). All aircraft expect further clearance to filed altitude 5 minutes after departure.

LOST COMMUNICATIONS: If not in contact with Departure Control within five minutes after departure climb to FL230 or filed altitude, whichever is lower. Aircraft filing FL240 or above climb to filed altitude ten minutes after departure.

DINTY TRANSITION (VTU8.DINTY): From over VTU VOR/DME on VTU R-272 to SUDDO INT then on RZS R-233 to DINTY.

SAN MARCUS TRANSITION (VTU8.RZS): From over VTU VOR/DME on VTU R-289 and RZS R-109 to RZS VORTAC.

VENTURA EIGHT DEPARTURE

(VTU8.VTU) 17AUG17

LOS ANGELES, CALIFORNIA
LOS ANGELES INTL (LAX)

SW-3, 28 NOV 2024 to 26 DEC 2024

SW-3, 28 NOV 2024 to 26 DEC 2024