

TOP ALTITUDE:
13000

RNAV 1 - DME/DME/IRU or GPS.

RADAR required for non-GPS equipped aircraft.

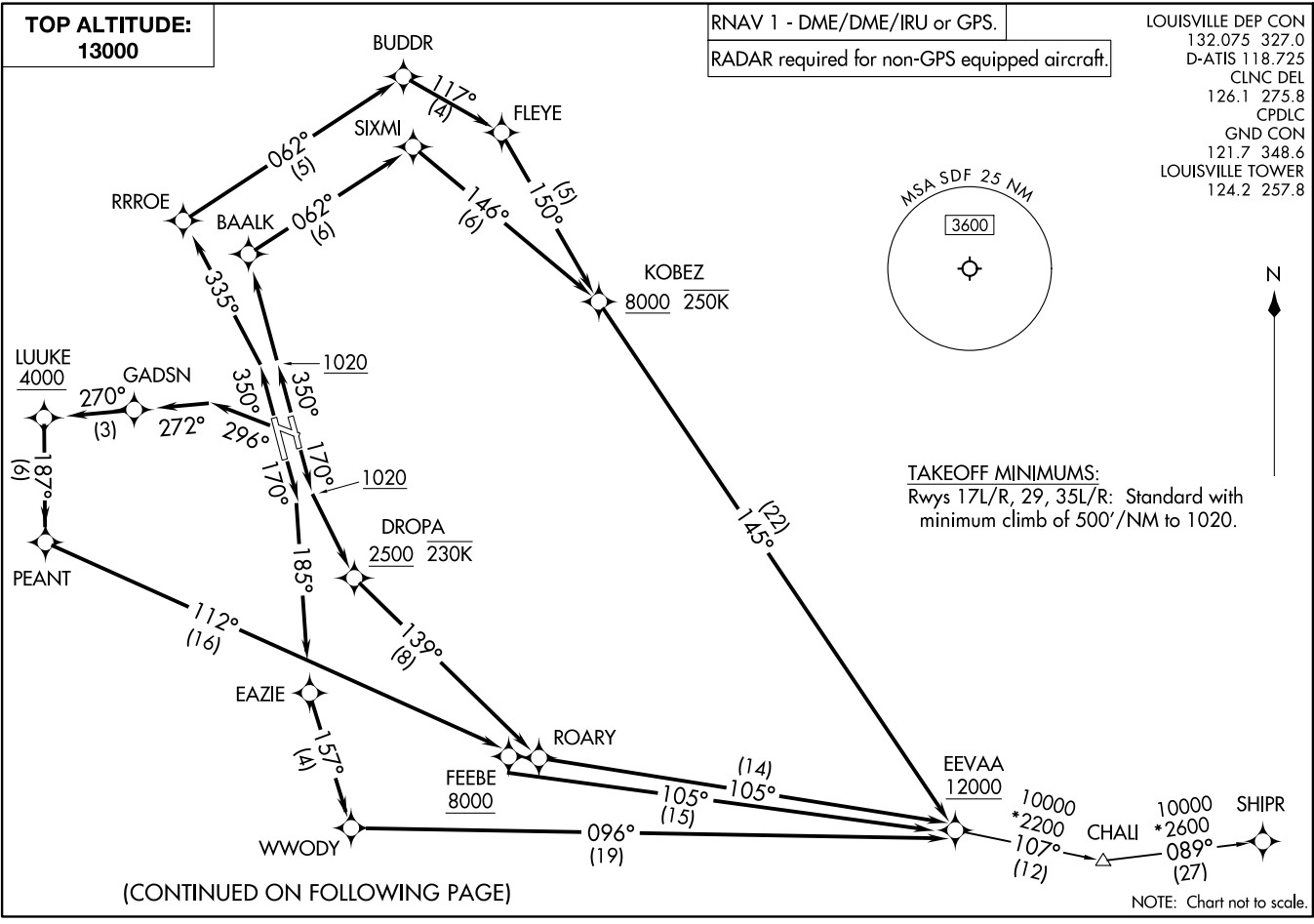
LOUISVILLE DEP CON
132.075 327.0
D-ATIS 118.725
CLNC DEL
126.1 275.8
CPDLC
GND CON
121.7 348.6
LOUISVILLE TOWER
124.2 257.8

EEVAA ONE DEPARTURE (RNAV)
(EEVAA1.EEVAA) 11JUL24

(EEVAA1.EEVAA) 24193
EEVAA ONE DEPARTURE (RNAV)

LOUISVILLE, KENTUCKY
LOUISVILLE MUHAMMAD ALI INTL (SDF)

LOUISVILLE, KENTUCKY
LOUISVILLE MUHAMMAD ALI INTL (SDF)



(CONTINUED ON FOLLOWING PAGE)

TAKEOFF MINIMUMS:
Rwys 17L/R, 29, 35L/R: Standard with
minimum climb of 500'/NM to 1020.

NOTE: Chart not to scale.

EEVAA ONE DEPARTURE (RNAV)



DEPARTURE ROUTE DESCRIPTION

TAKEOFF RUNWAY 17L: Climb on heading 170° to 1020, then direct to cross DROPA at or above 2500 and at or below 230K, then on track 139° to ROARY, then on track 105° to cross EEVAA at or above 12000, thence ...

TAKEOFF RUNWAY 17R: Climb on heading 170° to intercept course 185° to EAZIE, then on track 157° to WWODY, then on track 096° to cross EEVAA at or above 12000, thence ...

TAKEOFF RUNWAY 29: Climb on heading 296° to intercept course 272° to GADSN, then on track 270° to cross LUUKE at or above 4000, then on track 187° to PEANT, then on track 112° to cross FEEBE at or above 8000, then on track 105° to cross EEVAA at or above 12000, thence ...

TAKEOFF RUNWAY 35L: Climb on heading 350° to intercept course 335° to RRROE, then on track 062° to BUDDR, then on track 117° to FLEYE, then on track 150° to cross KOBEZ at or above 8000 and at or below 250K, then on track 145° to cross EEVAA at or above 12000, thence ...

TAKEOFF RUNWAY 35R: Climb on heading 350° to 1020, then direct BAALK, then on track 062° to SIXMI, then on track 146° to cross KOBEZ at or above 8000 and at or below 250K, then on track 145° to cross EEVAA at or above 12000, thence ...

... then on transition, maintain 13000. Expect filed altitude 10 minutes after departure.

SHIPR TRANSITION (EEVAA1.SHIPR)

SE-1, 28 NOV 2024 to 26 DEC 2024

SE-1, 28 NOV 2024 to 26 DEC 2024