

(HIDEY1.HIDEY) 24193

AL-239 (FAA)

LOUISVILLE MUHAMMAD ALI INTL (SDF)

LOUISVILLE, KENTUCKY

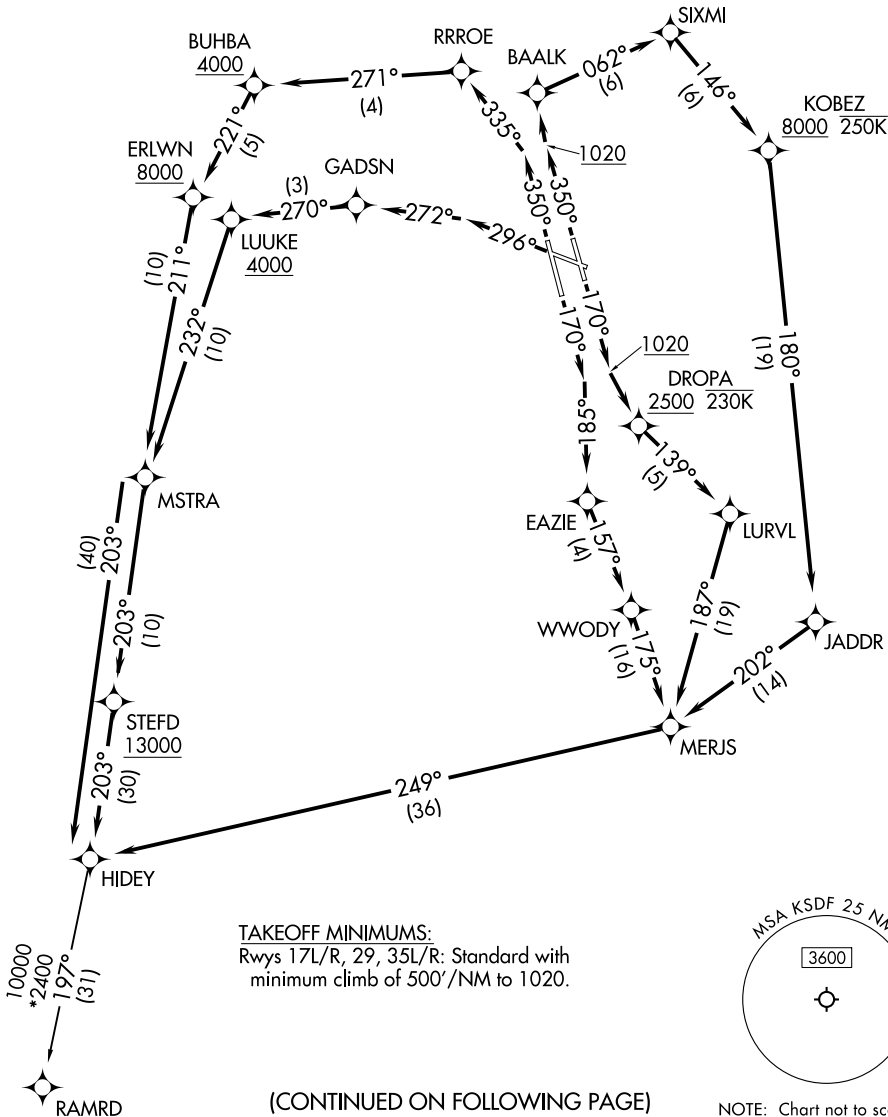
# HIDEY ONE DEPARTURE (RNAV)

LOUISVILLE DEP CON  
 132.075 327.0  
 D-ATIS 118.725  
 CLNC DEL  
 126.1 275.8  
 CPDLC  
 GND CON  
 121.7 348.6  
 LOUISVILLE TOWER  
 124.2 257.8

RNAV 1 - DME/DME/IRU or GPS.

RADAR required for non-GPS equipped aircraft.

**TOP ALTITUDE:  
13000**



SE-1, 28 NOV 2024 to 26 DEC 2024

SE-1, 28 NOV 2024 to 26 DEC 2024

# HIDEY ONE DEPARTURE (RNAV)

(HIDEY1.HIDEY) 11JUL24

LOUISVILLE, KENTUCKY  
 LOUISVILLE MUHAMMAD ALI INTL (SDF)

(CONTINUED ON FOLLOWING PAGE)

# HIDEY ONE DEPARTURE (RNAV)



## DEPARTURE ROUTE DESCRIPTION

TAKEOFF RUNWAY 17L: Climb on heading 170° to 1020, then direct to cross DROPA at or above 2500 and at or below 230K, then on track 139° to LURVL, then on track 187° to MERJS, then on track 249° to HIDEY, thence . . . .

TAKEOFF RUNWAY 17R: Climb on heading 170° to intercept course 185° to EAZIE, then on track 157° to WWODY, then on track 175° to MERJS, then on track 249° to HIDEY, thence . . . .

TAKEOFF RUNWAY 29: Climb on heading 296° to intercept course 272° to GADSN, then on track 270° to cross LUUKE at or above 4000, then on track 232° to MSTR, then on track 203° to cross STEFD at or above 13000, then on track 203° to HIDEY, thence . . . .

TAKEOFF RUNWAY 35L: Climb on heading 350° to intercept course 335° to RRROE, then on track 271° to cross BUHBA at or above 4000, then on track 221° to cross ERLWN at or above 8000, then on track 211° to MSTR, then on track 203° to HIDEY, thence . . . .

TAKEOFF RUNWAY 35R: Climb on heading 350° to 1020, then direct BAALK, then on track 062° to SIXMI, then on track 146° to cross KOBZ at or above 8000 and at or below 250K, then on track 180° to JADDR, then on track 202° to MERJS, then on track 249° to HIDEY, thence . . . .

. . . . then on transition. Maintain 13000, expect filed altitude 10 minutes after departure.

RAMRD TRANSITION (HIDEY1.RAMRD)

SE-1, 28 NOV 2024 to 26 DEC 2024

SE-1, 28 NOV 2024 to 26 DEC 2024