

LOC/DME I-JJM 110.55 Chan 42 (Y)	APP CRS 350°	Rwy Idg 7800 TDZE 479 Apt Elev 501
---	------------------------	---

ILS RWY 35R (CAT II & III)

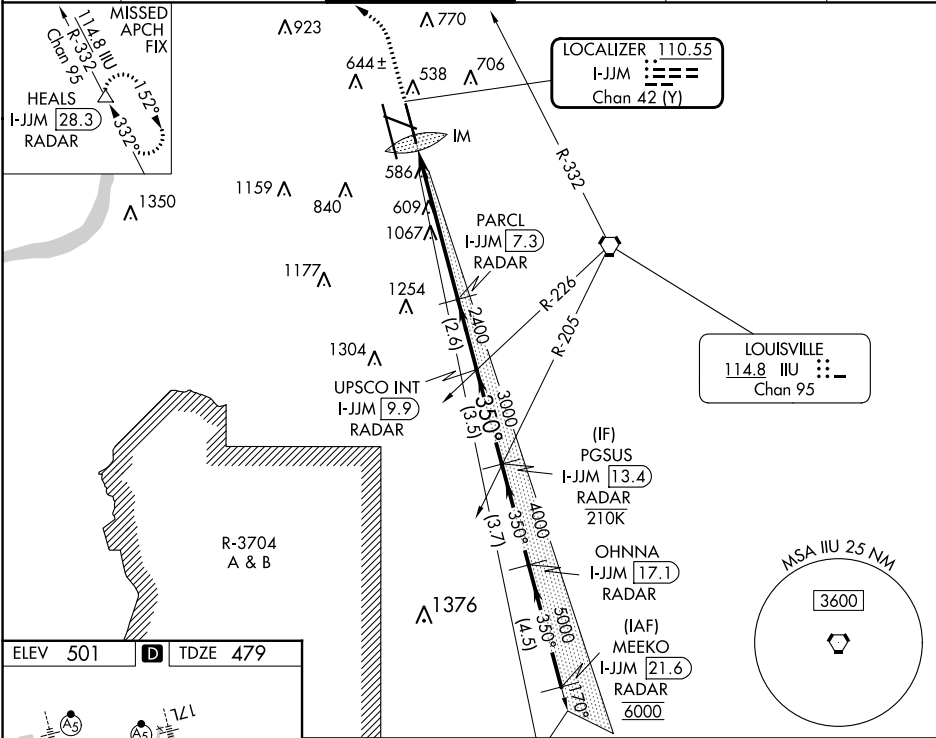
LOUISVILLE MUHAMMAD ALI INTL (SDF)

Simultaneous approach authorized. Cat II: RVR 1000 authorized with specific OPSPEC, MSPEC, or LOA approval and use of autoland or HUD to touchdown.

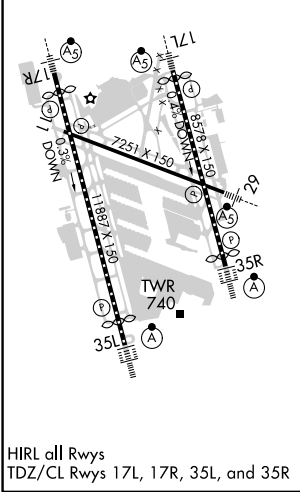


MISSED APPROACH: Climb to 2500 then climbing left turn to 4000 on heading 350° and on IJU VORTAC R-332 to HEALS/28.3 DME/RADAR and hold.

D-ATIS 118.725	LOUISVILLE APP CON 132.075 327.0	LOUISVILLE TOWER 124.2 257.8	GND CON 121.7 348.6	CLNC DEL 126.1 275.8	CPDLC
--------------------------	--	--	-------------------------------	--------------------------------	-------



ELEV 501	D	TDZE 479
----------	----------	----------



2500	4000	↑ hdg 350°	IJU R-332	HEALS △	VGSI and ILS glidepath not coincident (VGSI Angle 3.00/TCH 72).	PGSUS I-JJM 13.4 RADAR
				PARCL I-JJM 7.3 RADAR	UPSCO INT I-JJM 9.9 RADAR	PGSUS I-JJM 13.4 RADAR
				IM 609	2400	3000
				2400	350°	4000
				GS 3.00°	TCH 60	
				5.9 NM	2.6 NM	3.5 NM
CATEGORY	A	B	C	D		
S-ILS 35R	CAT II		RA 100/12	100 DA 579		
S-ILS 35R	CAT III		RVR 06			

CATEGORY II & III ILS - SPECIAL AIRCREW & AIRCRAFT CERTIFICATION REQUIRED

SE-1, 28 NOV 2024 to 26 DEC 2024

SE-1, 28 NOV 2024 to 26 DEC 2024