

LOC/DME I-SNU 110.3 Chan 40	APP CRS 170°	Rwy Idg 10000 TDZE 485 Apt Elev 501
---	------------------------	--

ILS or LOC RWY 17R

LOUISVILLE MUHAMMAD ALI INTL (SDF)

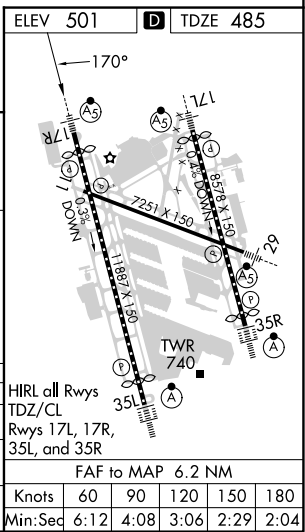
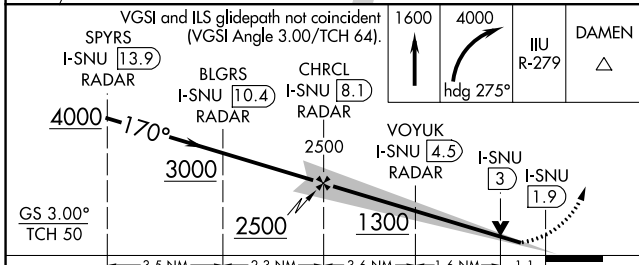
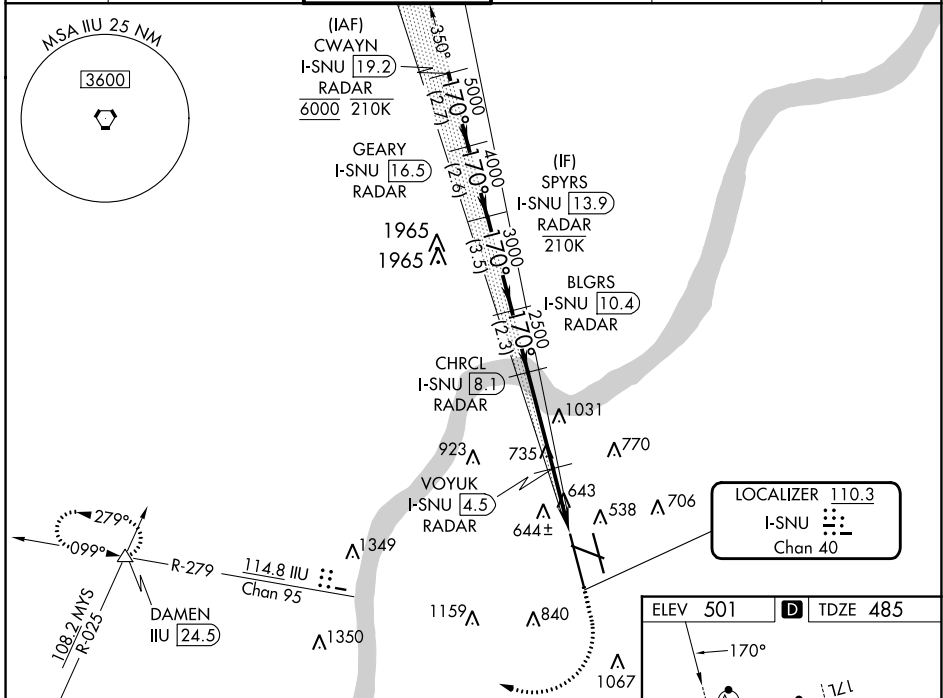
RADAR required for procedure entry at CWAYN.
DME or RADAR required.

Simultaneous approach authorized. Circling Rwy 11 NA at night.
For Inop ALS, increase S-LOC 17R Cat C/D visibility to RVR 6000.

MALSRL
AS

MISSED APPROACH: Climb to 1600 then climbing right turn to 4000 on heading 275° and on IIL VORTAC R-279 to DAMEN INT/24.5 DME and hold.

D-ATIS 118.725	LOUISVILLE APP CON 132.075 327.0	LOUISVILLE TOWER 124.2 257.8	GND CON 121.7 348.6	CLNC DEL 126.1 275.8	CPDLC
--------------------------	--	--	-------------------------------	--------------------------------	-------



CATEGORY	A	B	C	D
S-ILS 17R		685/18	200 (200-½)	
S-LOC 17R	900/24	415 (400-½)	900/40	415 (400-¾)
CIRCLING	1040-1 539 (600-1)	1140-1 639 (700-1)	1160-1¾ 659 (700-1¾)	1400-3 899 (900-3)

HIRL all Rwys TDZ/CL					
Rwys 17L, 17R, 35L, and 35R					
FAF to MAP 6.2 NM					
Knots	60	90	120	150	180
Min:Sec	6:12	4:08	3:06	2:29	2:04

SE-1, 28 NOV 2024 to 26 DEC 2024

SE-1, 28 NOV 2024 to 26 DEC 2024