

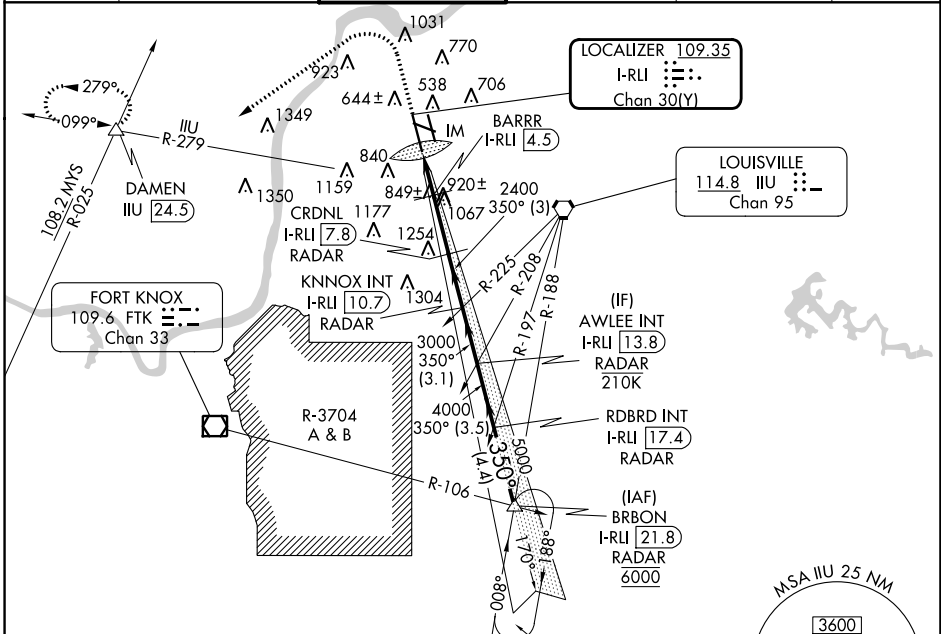
LOC/DME I-RLI 109.35	APP CRS 350°	Rwy Idg TDZE Apt Elev	10000 464 501
Chan 30 (Y)			

ILS or LOC RWY 35L

LOUISVILLE MUHAMMAD ALI INTL (SDF)

DME required for LOC only. RADAR required.		ALSIF-2 A	MISSED APPROACH: Climb to 1000 then climbing left turn to 4000 on heading 240° and IJU VORTAC R-279 to DAMEN INT/ IJU 24.5 DME and hold.
<p>Simultaneous approach authorized. Circling Rwy 11 NA at night.</p> <p>For inop ALS, increase S-LOC 35L Cat C/D visibility to 1 3/4 SM.</p>			

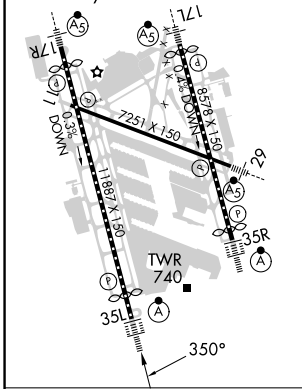
D-ATIS 118.725	LOUISVILLE APP CON 132.075 327.0	LOUISVILLE TOWER 124.2 257.8	GND CON 121.7 348.6	CLNC DEL 126.1 275.8	CPDLC
--------------------------	--	--	-------------------------------	--------------------------------	-------



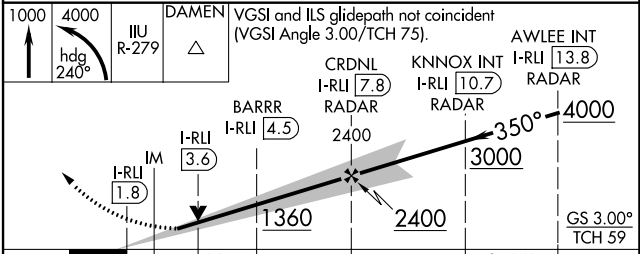
SE-1, 28 NOV 2024 to 26 DEC 2024

SE-1, 28 NOV 2024 to 26 DEC 2024

ELEV 501	D	TDZE 464
TDZ/CL Rwy 17L, 17R, 35L, and 35R		
HIRL all Rwy		



1450 A	Arrival holding not required at BRBN on V5-513 northbound.	MSA IJU 25 NM 3600
-----------	--	-----------------------



CATEGORY	S-ILS 35L			
S-ILS 35L	664/18 200 (200-1/2)			
S-LOC 35L	1100/24	636 (600-1/2)	1100-1 3/4	636 (600-1 3/8)
CIRCLING	1100-1 599 (600-1)	1140-1 639 (700-1)	1160-1 3/4 659 (700-1 3/4)	1400-3 899 (900-3)