


LOC I-LKS <b>109.1</b>	APP CRS <b>297°</b>	Rwy Idg TDZE Apt Elev <b>7250</b> <b>480</b> <b>501</b>
---------------------------	------------------------	--

# LOC RWY 29

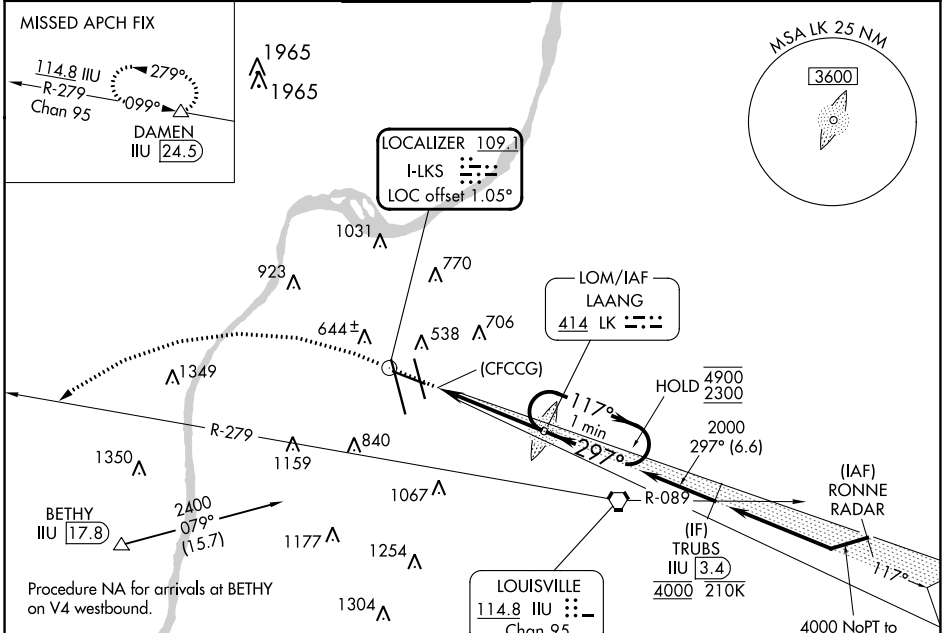
LOUISVILLE MUHAMMAD ALI INTL (SDF')

**RADAR required. ADF or DME required.**

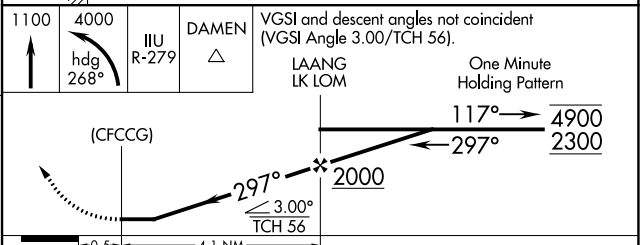
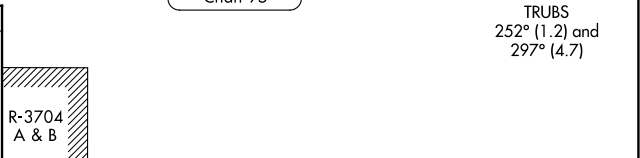
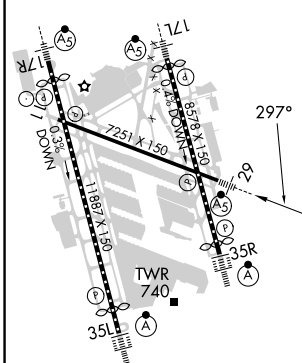
**⚠** Circling Rwy 11 NA at night. Rwy 29 helicopter visibility reduction below RVR 4000 NA. For inop ALS, increase S-29 visibility Cats A/B to RVR 5500 and Cats C/D to 1½ SM.

**MALSR**  **MISSED APPROACH:** Climb to 1100 then climbing left turn to 4000 heading 268° and on ILL VORTAC R-279 to DAMEN and hold.

D-ATIS <b>118.725</b>	LOUISVILLE APP CON <b>132.075 327.0</b>	LOUISVILLE TOWER <b>124.2 257.8</b>	GND CON <b>121.7 348.6</b>	CLNC DEL <b>126.1 275.8</b>	CPDLC
--------------------------	--	--	-------------------------------	--------------------------------	-------



ELEV 501	<b>D</b>	TDZE 480
----------	----------	----------



	FAF to MAP 4.1 NM					
	Knots	60	90	120	150	180
	Min:Sec	4:06	2:44	2:03	1:38	1:22
<b>CIRCLING</b>	Category	A	B	C	D	
	S-29	1060/40	580 (600-¾)	1060-1¼	580 (600-1¼)	
		1060-1	1140-1	1160-1¾	1400-3	
		559 (600-1)	639 (700-1)	659 (700-1¾)	899 (900-3)	

SE-1, 28 NOV 2024 to 26 DEC 2024

SE-1, 28 NOV 2024 to 26 DEC 2024