

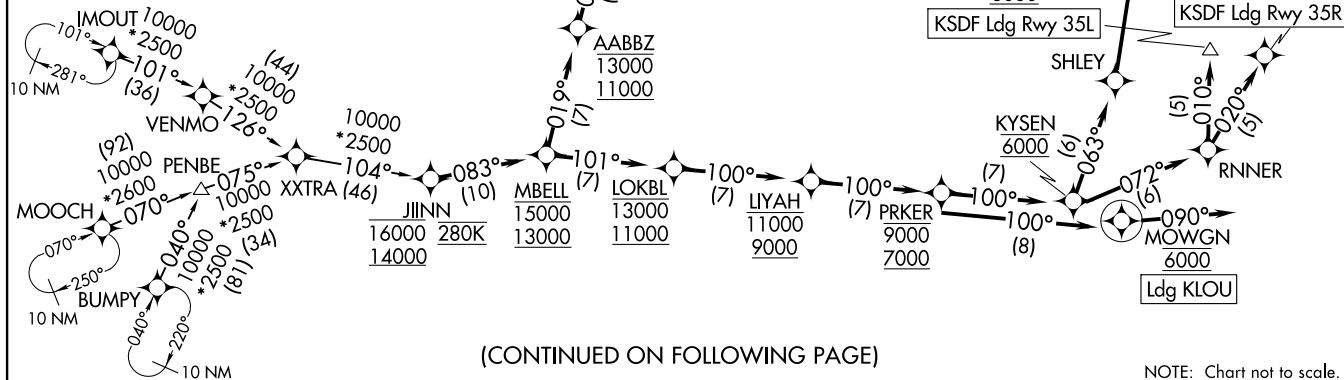
JINN.MBELLS) 11JUL24

MBELL FIVE ARRIVAL (RNAV)

LOUISVILLE, KENTUCKY

LOUISVILLE APP CON
132.075 327.0
SDF D-ATIS
118.725
LOU ATIS
124.15

NOTE: Jet aircraft only.
NOTE: PENBE Transition ATC assigned only.
NOTE: KSDF Landing North select Rwy 35L Transition.
Expect runway assignment from Louisville APP CON prior to JINN.
NOTE: KSDF Landing South select Rwy 17R Transition.
Expect runway assignment from Louisville APP CON prior to JINN.



(CONTINUED ON FOLLOWING PAGE)

NOTE: Chart not to scale.

JINN.MBELLS) 24193

LOUISVILLE, KENTUCKY

AL-239 (FAA)

ARRIVAL ROUTE DESCRIPTION

- BUMPY TRANSITION (BUMPY.MBELL5):
- IMOUT TRANSITION (IMOUT.MBELL5):
- MOOCH TRANSITION (MOOCH.MBELL5):
- PENBE TRANSITION (PENBE.MBELL5):

KSDF: From JIINN on track 083° to cross MBELL between 13000 and 15000.

LANDING KSDF RUNWAYS 17L/R: From MBELL on track 019° to cross AABBZ between 11000 and 13000, then on track 019° to cross BLEEM between 9000 and 11000, then on track 034° to cross GLENM between 7000 and 9000, then on track 052° to cross AUDRY between 6000 and 7000, then on track 052° to cross BEEKK at 6000, then on track 052° to TROLL, then on track 351° to cross PDUDL at 6000, then on track 351°. Expect RADAR vectors to final approach course.

LANDING KSDF RUNWAY 29: From MBELL on track 101° to cross LOKBL between 11000 and 13000, then on track 100° to cross LIYAH between 9000 and 11000, then on track 100° to cross PRKER between 7000 and 9000, then on track 100° to cross KYSEN at 6000, then on track 063° to SHLEY, then on track 026° to cross FARNK at 6000, then on track 116° to cross MAYLN at 6000, then on track 118°. Expect RADAR vectors to final approach course.

LANDING KSDF RUNWAY 35L: From MBELL on track 101° to cross LOKBL between 11000 and 13000, then on track 100° to cross LIYAH between 9000 and 11000, then on track 100° to cross PRKER between 7000 and 9000, then on track 100° to cross KYSEN at 6000, then on track 072° to RNNER, then on track 010° to cross BRBON at 6000. Expect ILS or LOC RWY 35L approach.

LANDING KSDF RUNWAY 35R: From MBELL on track 101° to cross LOKBL between 11000 and 13000, then on track 100° to cross LIYAH between 9000 and 11000, then on track 100° to cross PRKER between 7000 and 9000, then on track 100° to cross KYSEN at 6000, then on track 072° to RNNER, then on track 020° to cross MEEKO at 6000. Expect ILS or LOC RWY 35R approach.

LANDING KJVY: From JIINN on track 083° to cross MBELL between 13000 and 15000, then on track 019° to cross AABBZ between 11000 and 13000, then on track 019° to cross BLEEM between 9000 and 11000, then on track 019° to cross DOWNS between 7000 and 9000, then on track 030° to cross SIPPN at 5000, then on track 030°. Expect RADAR vectors to final approach course.

LANDING KLOU: From JIINN on track 083° to cross MBELL between 13000 and 15000, then on track 101° to cross LOKBL between 11000 and 13000, then on track 100° to cross LIYAH between 9000 and 11000, then on track 100° to cross PRKER between 7000 and 9000, then on track 100° to cross MOWGN at 6000, then on track 090°. Expect RADAR vectors to final approach course.