

RDHSE ONE DEPARTURE (RNAV)

TOP ALTITUDE:
13000

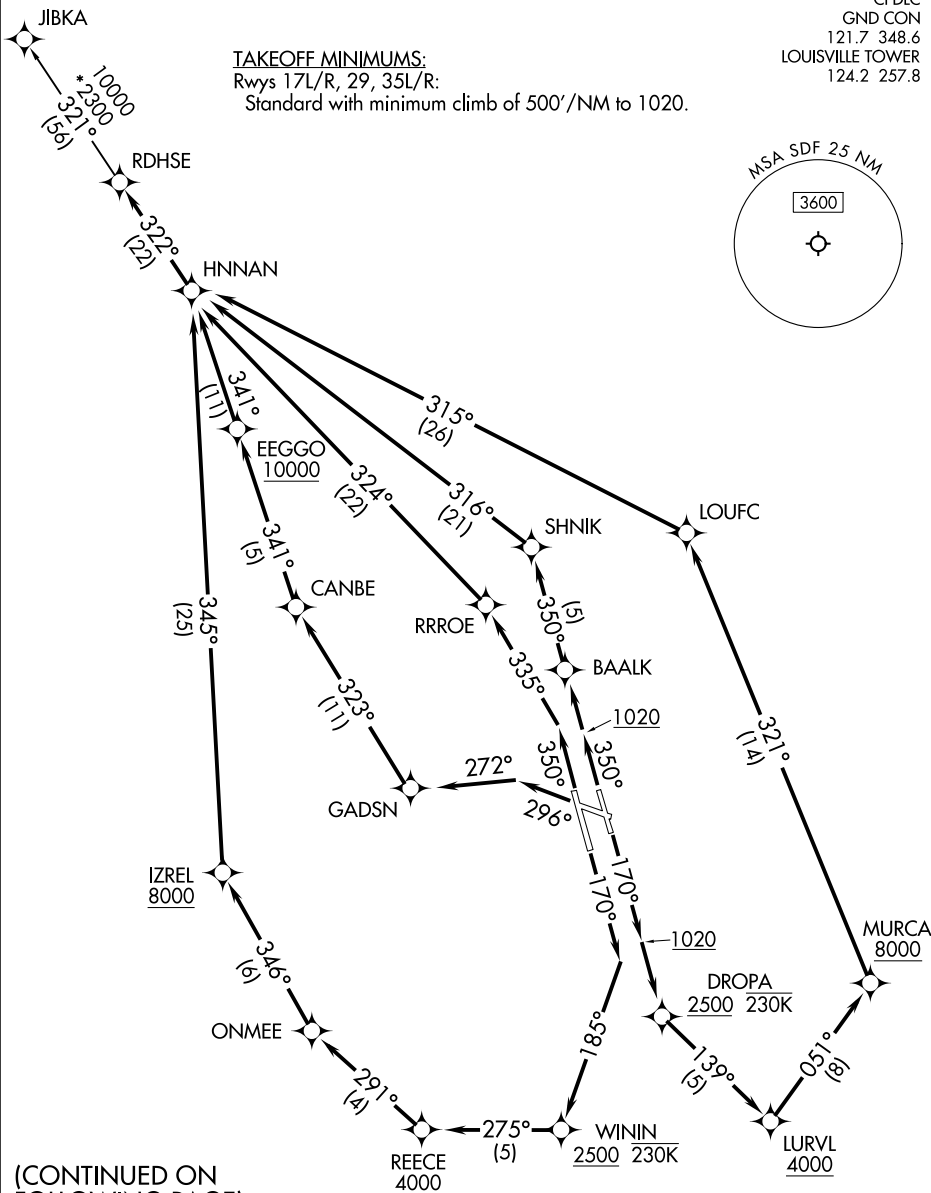
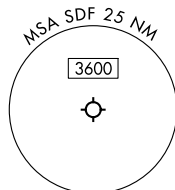
RNAV 1 - DME/DME/IRU or GPS.
RADAR required for non-GPS equipped aircraft.

LOUISVILLE DEP CON
132.075 327.0
D-ATIS 118.725
CLNC DEL
126.1 275.8
CPDLC
GND CON
121.7 348.6
LOUISVILLE TOWER
124.2 257.8

TAKEOFF MINIMUMS:

Rwys 17L/R, 29, 35L/R:

Standard with minimum climb of 500'/NM to 1020.



(CONTINUED ON FOLLOWING PAGE)

NOTE: Chart not to scale.

RDHSE ONE DEPARTURE (RNAV)



DEPARTURE ROUTE DESCRIPTION

TAKEOFF RUNWAY 17L: Climb on heading 170° to 1020, then direct DROPA at or above 2500 and at or below 230K, then on track 139° to cross LURVL at or above 4000, then on track 051° to cross MURCA at or above 8000, then on track 321° to LOUFC, then on track 315° to HNNAN, thence ...

TAKEOFF RUNWAY 17R: Climb on heading 170° to intercept course 185° to cross WININ at or above 2500 and at or below 230K, then on track 275° to cross REECE at or above 4000, then on track 291° to ONMEE, then on track 346° to cross IZREL at or above 8000, then on track 345° to HNNAN, thence ...

TAKEOFF RUNWAY 29: Climb on heading 296° to intercept course 272° to GADSN, then on track 323° to CANBE, then on track 341° to cross EEGGO at or above 10000, then on track 341° to HNNAN, thence ...

TAKEOFF RUNWAY 35L: Climb on heading 350° to intercept course 335° to RRROE, then on track 324° to HNNAN, thence ...

TAKEOFF RUNWAY 35R: Climb on heading 350° to 1020, then direct BAALK, then on track 350° to SHNIK, then on track 316° to HNNAN, thence ...

... then on track 322° to RDHSE. Then on transition. Maintain 13000. Expect filed altitude 10 minutes after departure.

JIBKA TRANSITION (RDHSE1.JIBKA):

SE-1, 28 NOV 2024 to 26 DEC 2024

SE-1, 28 NOV 2024 to 26 DEC 2024