

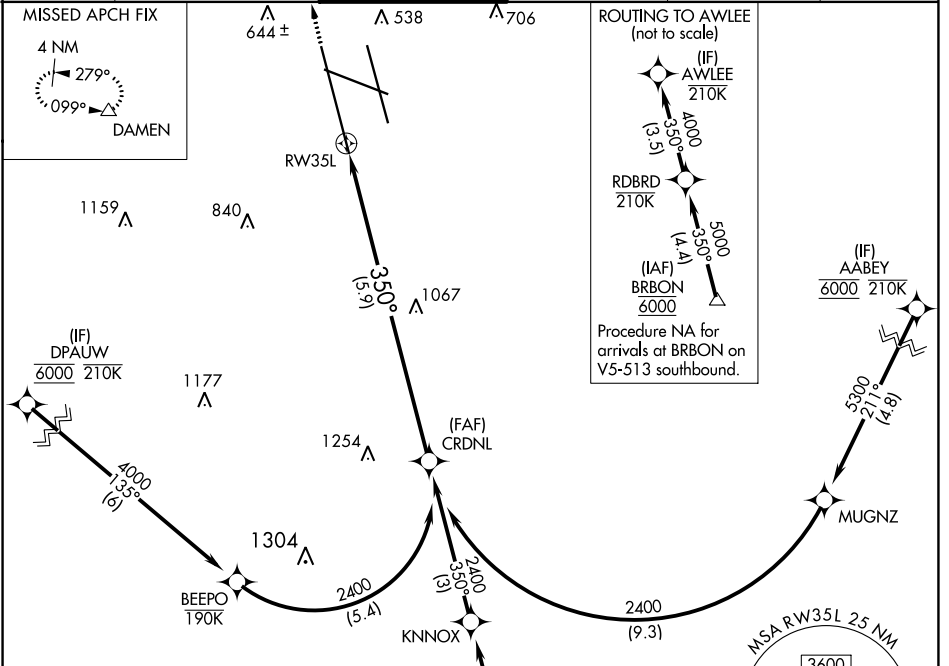
APP CRS	Rwy Idg	10000
350°	TDZE	464
	Apt Elev	501

RNAV (RNP) Z RWY 35L

LOUISVILLE MUHAMMAD ALI INTL (SDF)

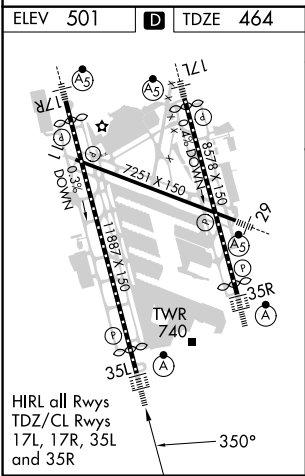
RNP AR APCH - GPS.		ALSF-2	MISSED APPROACH: Climb to 1000 then climbing left turn to 4000 direct DAMEN and hold.
<p>▼ For uncompensated Baro-VNAV systems, procedure NA below -10°C or above 54°C. Simultaneous approach authorized. For inop ALS, increase RNP 0.11 all Cats visibility to RVR 4500.</p>			

D-ATIS	LOUISVILLE APP CON	LOUISVILLE TOWER	GND CON	CLNC DEL	CPDLC
118.725	132.075 327.0	124.2 257.8	121.7 348.6	126.1 275.8	



SE-1, 28 NOV 2024 to 26 DEC 2024

SE-1, 28 NOV 2024 to 26 DEC 2024



1000	4000	(IF) AWLEE 210K	SEE INSET FOR ROUTING TO AWLEE
<p>↑</p>		DAMEN	△
<p>↶</p>		VGSi and RNAV glidepath not coincident (VGSi Angle 3.00/TCH 75).	
<p>↷</p>		CRDNL	2400
<p>↘</p>		See planview for multiple IF locations.	
<p>↙</p>		GP 3.00° TCH 59	
5.9 NM			
CATEGORY	A	B	C
RNP 0.11 DA		769/24	305 (300-½)
RNP 0.30 DA		897/40	433 (400-¾)

AUTHORIZATION REQUIRED