

LOC I-MCN 109.5	APP CRS 054°	Rwy Idg TDZE Apt Elev	6221 344 354
---------------------------	------------------------	-----------------------------	---

ILS RWY 5 (SA CAT I & II)

MIDDLE GEORGIA RGNL (MCN)

DME and RADAR required.

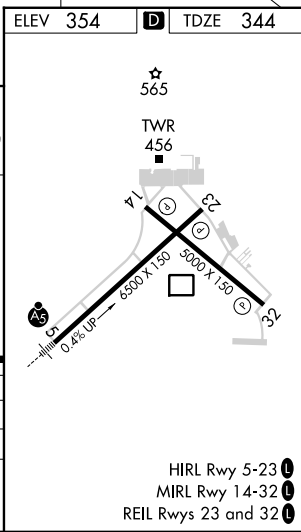
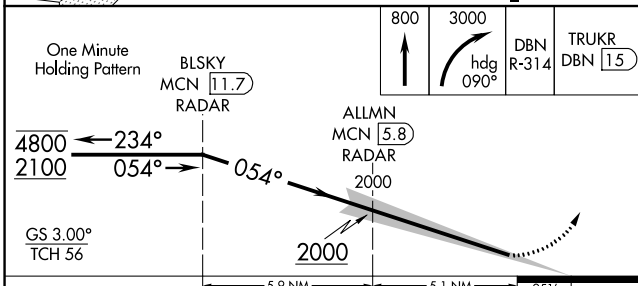
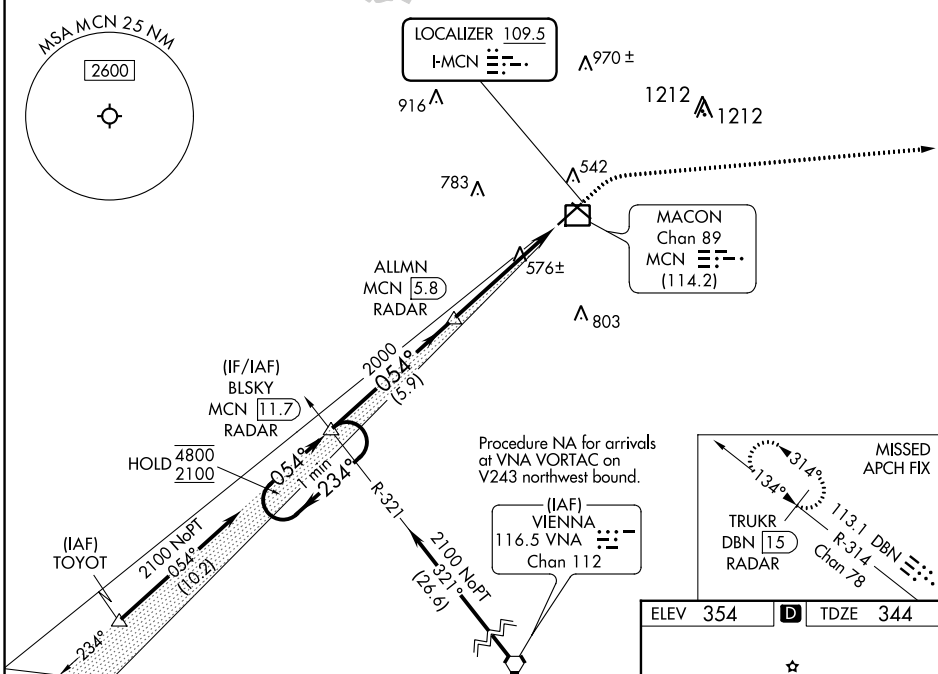
▽ DME from MCN VORTAC. Simultaneous reception of I-MCN and MCN DME required. Procedure NA when tower closed.

▲ SA CAT I: Requires specific OPSPEC, MSPEC, or LOA approval. SA CAT II: Reduced Lighting; Requires specific OPSPEC, MSPEC, or LOA approval and use of autoland or HUD to touchdown.

MALSRL

MISSED APPROACH: Climb to 800 then climbing right turn to 3000 on heading 090° and DBN VORTAC R-314 to TRUKR/DBN VORTAC 15 DME/RADAR and hold.

ATIS 120.775	ATLANTA APP CON ★ 124.2 279.6	MACON TOWER ★ 128.2 (CTAF) 257.8	GND CON 121.65	UNICOM 122.95
------------------------	---	--	--------------------------	-------------------------



CATEGORY	A	B	C	D
S-ILS 5	SA CAT I	RA 216/14	150 DA 494	
S-ILS 5	SA CAT II	RA 151/12	100 DA 444	

SA CATEGORY I & II ILS - SPECIAL AIRCREW & AIRCRAFT CERTIFICATION REQUIRED

SE-4, 28 NOV 2024 to 26 DEC 2024

SE-4, 28 NOV 2024 to 26 DEC 2024