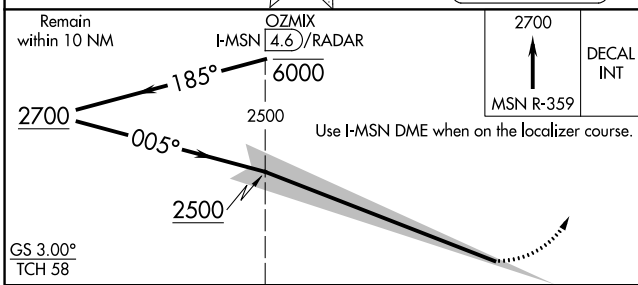
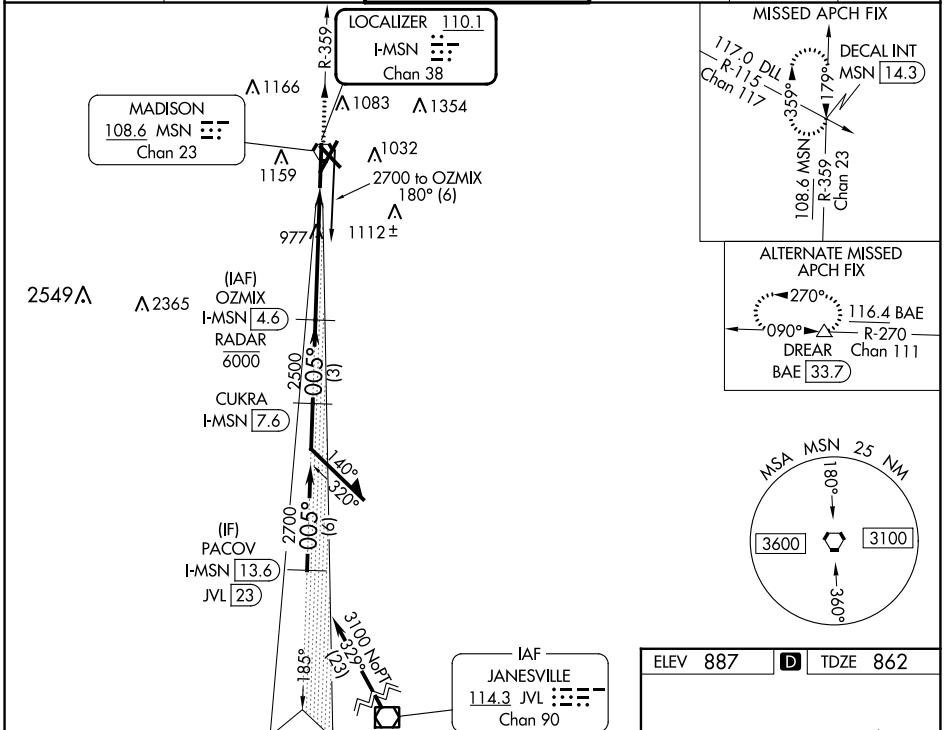


LOC/DME I-MSN 110.1 Chan 38	APP CRS 005°	Rwy Idg TDZE 862 Apt Elev 887
---	------------------------	---

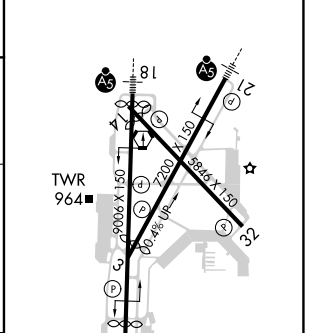
ILS RWY 36 (CAT II & III)

DANE COUNTY RGNL/TRUAX FLD (MSN)

DME or RADAR required.			ALSIF-2	MISSED APPROACH: Climb to 2700 on MSN VORTAC R-359 to DECAL INT/MSN 14.3 DME and hold.		
<p>▼ Procedure NA when tower closed. CAT II: RVR 1000 authorized with specific OPSPEC, MSPEC, or LOA approval and use of autoland or HUD to touchdown.</p> <p>▲</p>		<p>Ⓐ</p>				
ATIS 124.65 278.3	MADISON APP CON * 135.45 343.7	MADISON TOWER * 119.3 (CTAF) 0 257.8	GND CON 121.9 348.6	CLNC DEL 121.625	UNICOM 122.95	



ELEV 887	D	TDZE 862
----------	---	----------



CATEGORY	A	B	C	D
	S-ILS 36 CAT II RA 109/12 100 DA 962			
	S-ILS 36 CAT III RVR 06			

CATEGORY II & III ILS - SPECIAL AIRCREW & AIRCRAFT CERTIFICATION REQUIRED

HIRL all Rwy's
REIL Rwy's 3, 14 and 32

EC-3, 28 NOV 2024 to 26 DEC 2024

EC-3, 28 NOV 2024 to 26 DEC 2024