

NOTE: RADAR required.
NOTE: RNAV 1.
NOTE: DME/DME/IRU or GPS required.
NOTE: Turbojet aircraft only.
NOTE: MUCOW and CRIBB transitions are ATC assigned.

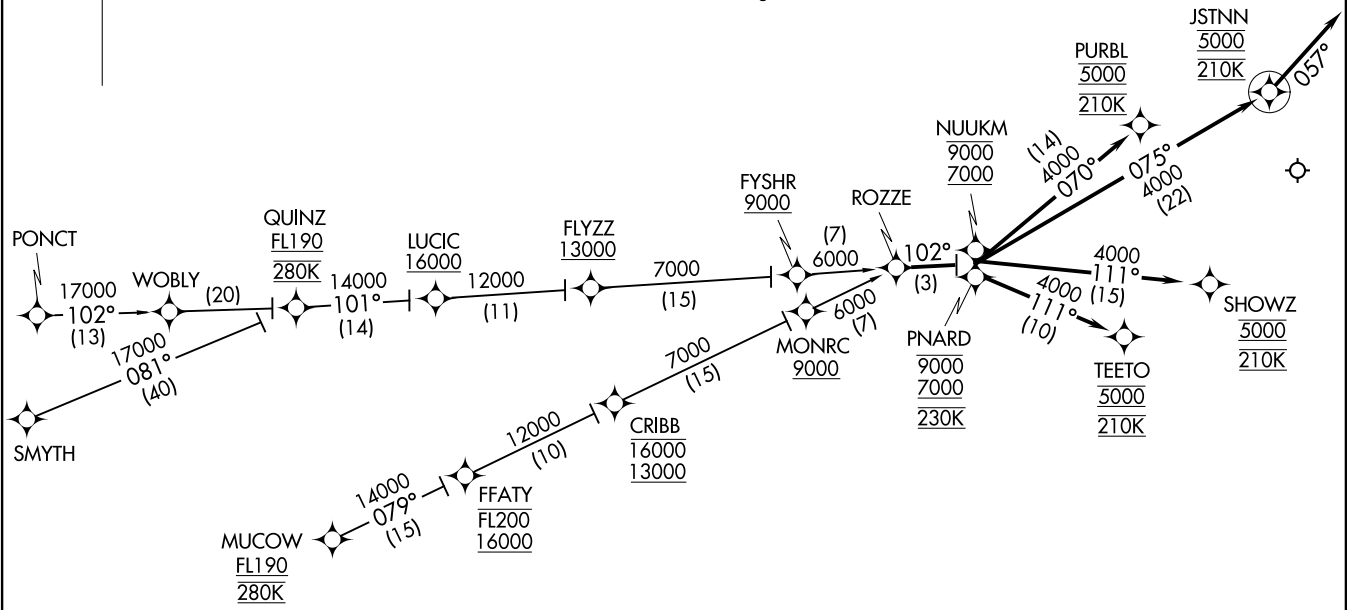
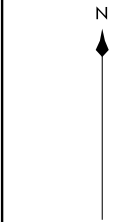
BOSTON CENTER
135.32 360.6
BOSTON APP CON
124.9 269.075
ATIS
119.55
MANCHESTER TOWER
121.3 239.025

ROZZE TWO ARRIVAL (RNAV)
(ROZZE,ROZZE2) 17AUG17

(ROZZE,ROZZE2) 21280
ROZZE TWO ARRIVAL (RNAV)

AL-246 (FAA)

MANCHESTER BOSTON RGNL (MHTT)
MANCHESTER, NEW HAMPSHIRE



NOTE: Chart not to scale.

(NARRATIVE ON FOLLOWING PAGE)

MANCHESTER, NEW HAMPSHIRE
MANCHESTER BOSTON RGNL (MHTT)

ARRIVAL ROUTE DESCRIPTION

- CRIBB TRANSITION (CRIBB.ROZZE2)
- MUCOW TRANSITION (MUCOW.ROZZE2)
- PONCT TRANSITION (PONCT.ROZZE2)
- QUINZ TRANSITION (QUINZ.ROZZE2)
- SMYTH TRANSITION (SMYTH.ROZZE2)

Landing Rwy 6: From ROZZE on track 102° to cross PNARD between 7000 and 9000 and at 230K, then on track 111° to cross TEETO at 5000 and at 210K. Expect ILS or LOC Rwy 6 or radar vectors to final approach course.

Landing Rwy 17: From ROZZE on track 102° to cross NUUKM between 7000 and 9000, then on track 070° to cross PURBL at 5000 and at 210K. Expect RNP approach or ILS or LOC/DME Rwy 17 or radar vectors to final approach course.

Landing Rwy 24: From ROZZE on track 102° to cross NUUKM between 7000 and 9000, then on track 075° to cross JSTNN at 5000 and at 210K, then on heading 057°. Expect radar vectors to final approach course.

Landing Rwy 35: From ROZZE on track 102° to cross NUUKM between 7000 and 9000, then on track 111° to cross SHOWZ at 5000 and at 210K. Expect RNP approach or ILS or LOC Rwy 35 or radar vectors to final approach course.

NE-1, 28 NOV 2024 to 26 DEC 2024

NE-1, 28 NOV 2024 to 26 DEC 2024