

| | | |
|-------------|----------|-------------|
| APP CRS | Rwy Idg | 7650 |
| 352° | TDZE | 265 |
| | Api Elev | 266 |

RNAV (RNP) Z RWY 35

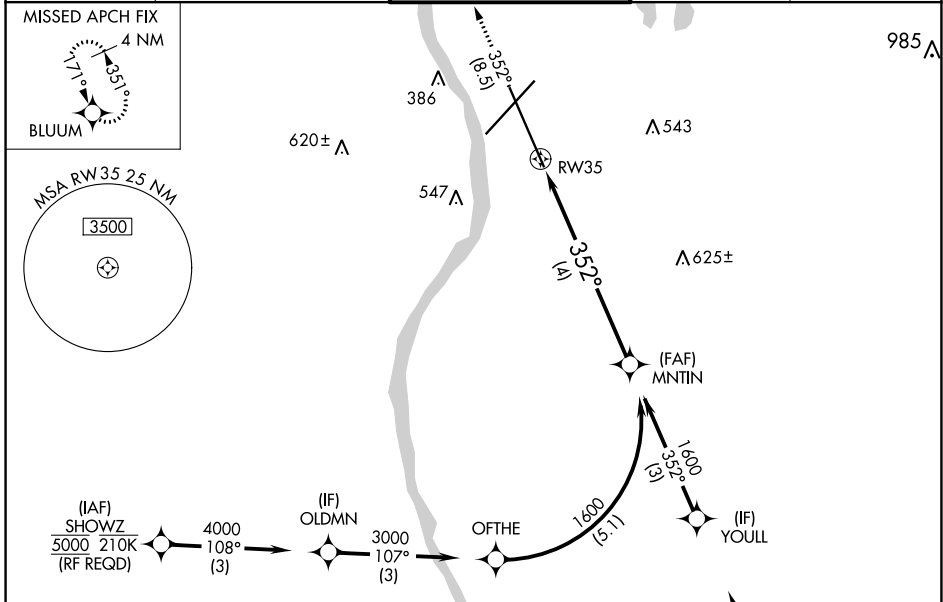
MANCHESTER BOSTON RGNL (MHT)

▼ For uncompensated Baro-VNAV systems, procedure NA below -18°C (0°F) or above 54°C (130°F). GPS required. When local altimeter not received, procedure NA. For inop ALSF-2, increase RNP 0.20 all Cats visibility to 1½ SM and RNP 0.30 all Cats visibility to 1¾ SM.

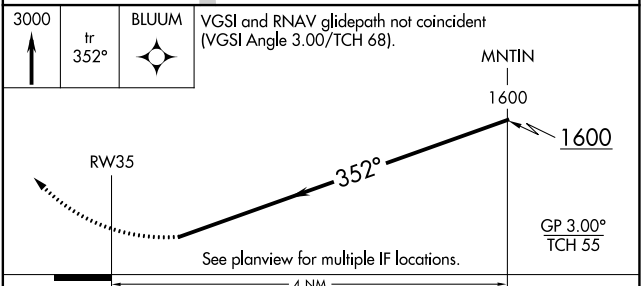
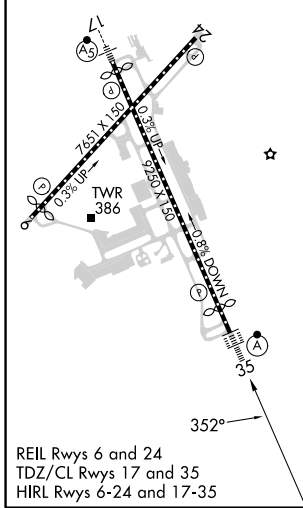
ALFS-2

MISSED APPROACH: Climb to 3000 on track 352° to BLUUM and hold, continue climb-in-hold to 3000.

| | | | | |
|---------------|----------------------|----------------------|--------------|--------------|
| ATIS | BOSTON APP CON | MANCHESTER TOWER | GND CON | CLNC DEL |
| 119.55 | 124.9 269.075 | 121.3 239.025 | 121.9 | 135.9 |



| | | |
|----------|----------|----------|
| ELEV 266 | D | TDZE 265 |
|----------|----------|----------|



| | | | | |
|-------------|---|--------|--------------|---|
| CATEGORY | A | B | C | D |
| RNP 0.20 DA | | 755/60 | 490 (500-1½) | |
| RNP 0.30 DA | | 802-1¾ | 537 (600-1¾) | |

AUTHORIZATION REQUIRED