

WAAS CH 93807 W17A	APP CRS 171°	Rwy Idg 8914 TDZE 229 Apt Elev 266
--	------------------------	---

RNAV (GPS) Y RWY 17

MANCHESTER BOSTON RGNL (MHT)

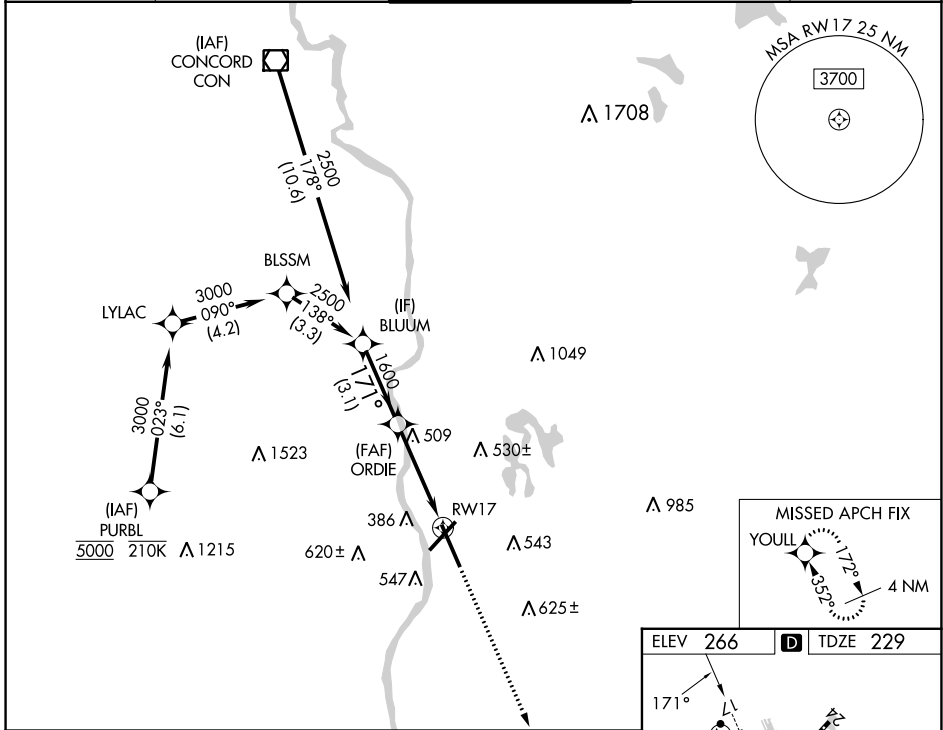
RNP APCH-GPS.

▽ For uncompensated Baro-VNAV systems, LNAV/VNAV NA below -19°C or above 54°C.
▲ For inop ALS, increase LNAV CAT A/B visibility to RVR 5500.

MALSR

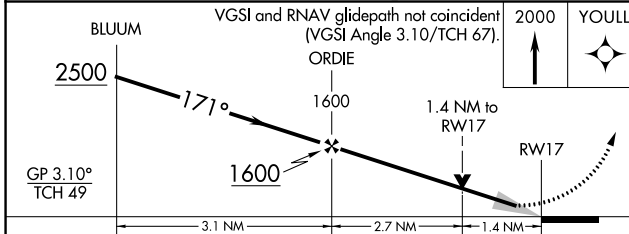
MISSED APPROACH: Climb to 2000 direct YOULL and hold.

ATIS 119.55	BOSTON APP CON 124.9 269.075	MANCHESTER TOWER 121.3 239.025	GND CON 121.9	CLNC DEL 135.9
-----------------------	--	--	-------------------------	--------------------------



NE-1, 28 NOV 2024 to 26 DEC 2024

NE-1, 28 NOV 2024 to 26 DEC 2024



ELEV 266	D TDZE 229
----------	-------------------

REIL Rwy 6 and 24
 TDZ/CL Rwy 17 and 35
 HIRL Rwy 6-24 and 17-35

CATEGORY	A	B	C	D
LPV DA		429/18	200 (200-½)	
LNAV/VNAV DA		760/55	531 (500-1)	
LNAV MDA	760/24	531 (500-½)	760/55	531 (500-1)
C CIRCLING	880-1	614 (700-1)	980-2 714 (800-2)	1100-2¾ 834 (900-2¾)