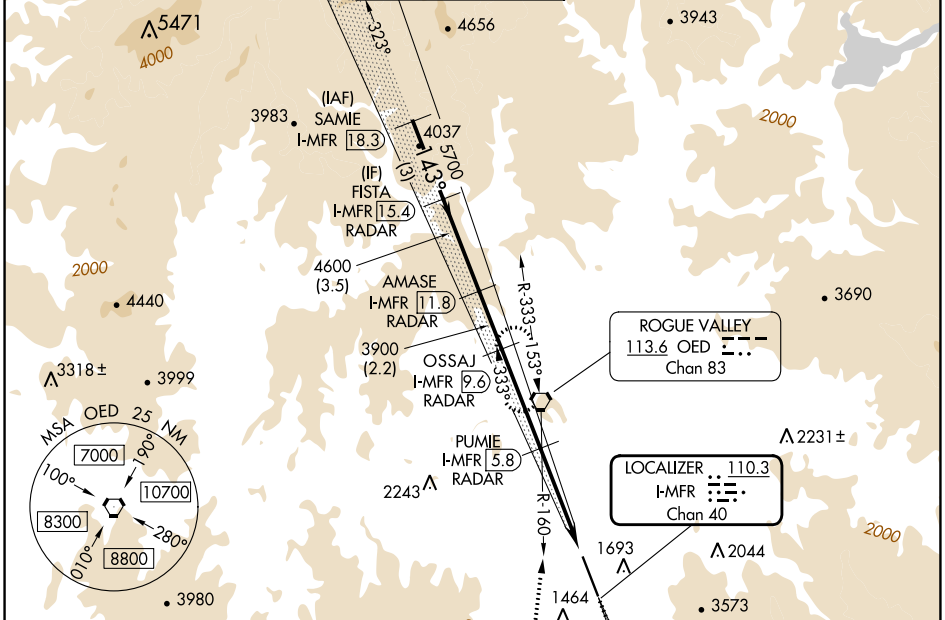


LOC/DME I-MFR 110.3 Chan 40	APP CRS 143°	Rwy Idg TDZE Apt Elev	8800 1303 1335
---	------------------------	-----------------------------	---

ILS or LOC RWY 14
ROGUE VALLEY INTL/MEDFORD (MFR)

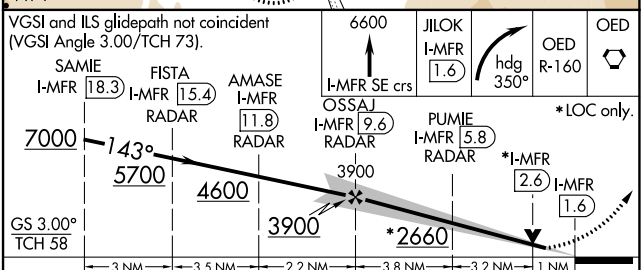
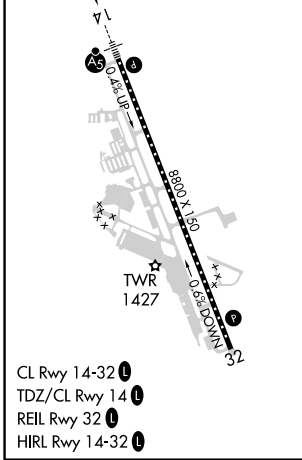
DME required. DME or RADAR required for procedure entry.		MALS R	MISSED APPROACH: Climb to 6600 on I-MFR SE course to JLOK/I-MFR 1.6 DME and climbing right turn on heading 350° and on OED VORTAC R-160 to OED VORTAC and hold, continue climb-in-hold to 6600. #Missed approach requires minimum climb of 331 feet per NM to 4100.	
Circling NA for Cats C and D northeast of Rwy 14-32. When Medford altimeter setting not received, procedure NA. For inop ALS, increase S-ILS 14 visibility to 1½ SM, increase S-LOC 14# Cats C and D visibility to RVR 5500, increase S-LOC 14 Cats C and D visibility to 2½ SM.			ATIS 127.25	CASCADE APP CON* 124.3 379.9
MEDFORD TOWER* 119.4 (CTAF) 0257.8		GND CON 121.8	UNICOM 122.95	



NW-1, 28 NOV 2024 to 26 DEC 2024

NW-1, 28 NOV 2024 to 26 DEC 2024

ELEV 1335	D	TDZE 1303
-----------	----------	-----------



CATEGORY	A	B	C	D
S-ILS 14#		1503/18	200 (200-½)	
S-ILS 14		1929-1½	626 (600-1¾)	
S-LOC 14#	1680/24	377 (400-½)	1680/35	377 (400-¾)
S-LOC 14	2080/24 777 (800-½)	2080/40 777 (800-¾)	2080-1¾	777 (800-1¾)
C CIRCLING	2080-1 745 (800-1)	2080-1¼ 745 (800-1¼)	2080-2½ 745 (800-2½)	2340-3 1005 (1100-3)