

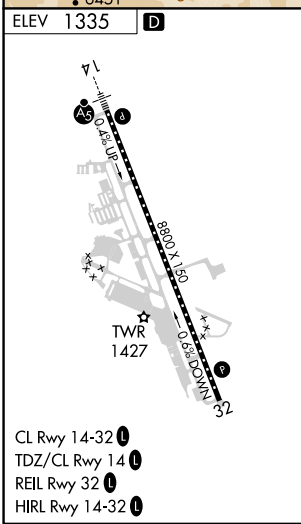
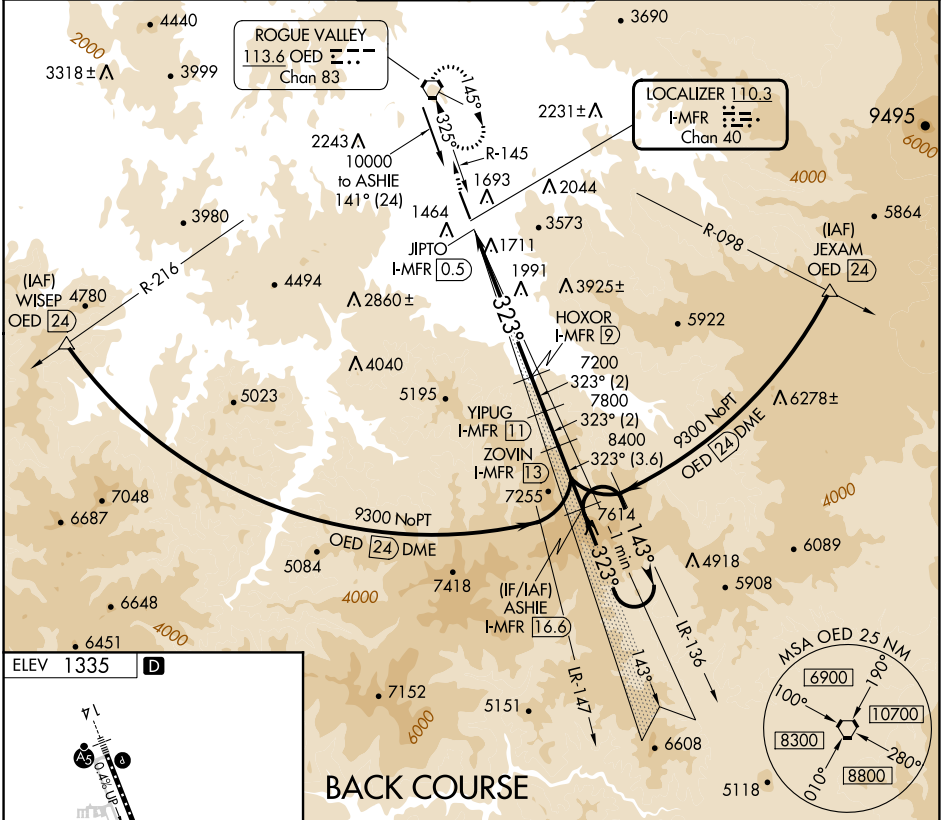
LOC/DME I-MFR 110.3 Chan 40	APP CRS 323°	Rwy Idg TDZE Apt Elev 1335	N/A N/A 1335
------------------------------------------	------------------------	-----------------------------------------	--------------------

LOC/DME BC-B

ROGUE VALLEY INTL/MEDFORD (MFR)

Visibility reduction by helicopters NA. Circling NA for Cats C and D northeast of Rwy 14-32.
 MISSED APPROACH: Climb to 7600 direct OED VORTAC and hold, continue climb-in-hold to 7600.

ATIS 127.25	CASCADE APP CON * 124.3 379.9	MEDFORD TOWER * 119.4 (CTAF) 257.8	GND CON 121.8	UNICOM 122.95
-----------------------	-----------------------------------------	----------------------------------------------	-------------------------	-------------------------



7600	OED	VSGI and descent angles not coincident (VSGI Angle 3.00/TCH 50).	ASHIE I-MFR 16.6	One Minute Holding Pattern
Disregard GS indications.				
CATEGORY	A	B	C	D
CIRCLING	3540-1¼ 2205 (2300-1¼)	3540-1½ 2205 (2300-1½)	3540-3	2205 (2300-3)

NW-1, 28 NOV 2024 to 26 DEC 2024

NW-1, 28 NOV 2024 to 26 DEC 2024