

APP CRS <b>143°</b>	Rwy Idg <b>8800</b>
TDZE <b>1303</b>	Apt Elev <b>1335</b>

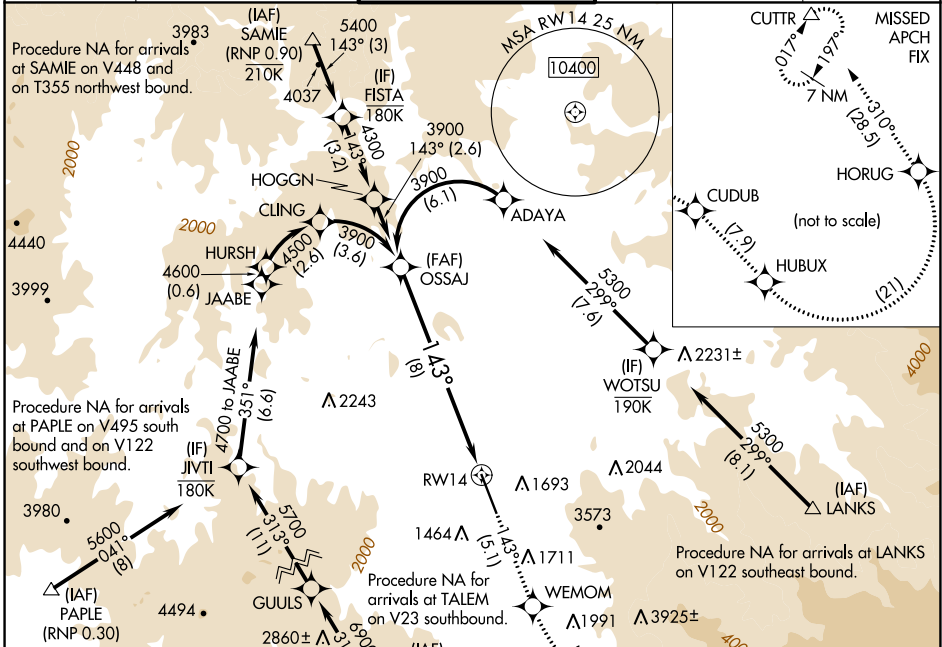
# RNAV (RNP) Z RWY 14

ROGUE VALLEY INTL/MEDFORD (MFR)

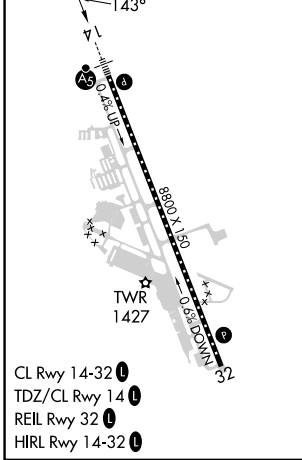
RNP AR APCH-GPS.  
 For uncompensated Baro-VNAV systems, procedure NA below -6°C or above 54°C. For inop ALS, increase RNP 0.30 all Cnts visibility to 2 SM.

MALSR  
 MISSED APPROACH: Climb to 9000 on track 143° to WEMOM, left turn to CUDUB, right turn HUBUX, left turn HORUG, then on track 310° to CUTTR and hold. \* Missed approach requires minimum climb of 244 feet per NM to 5000.

ATIS <b>127.25</b>	CASCADE APP CON * <b>124.3 379.9</b>	MEDFORD TOWER * <b>119.4 (CTAF) 257.8</b>	GND CON <b>121.8</b>	UNICOM <b>122.95</b>
-----------------------	---	--	-------------------------	-------------------------

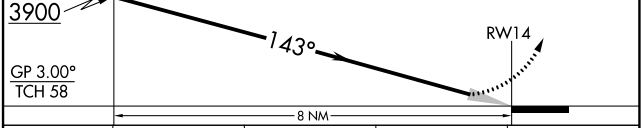


ELEV <b>1335</b>	TDZE <b>1303</b>
------------------	------------------



OSSAJ  
 3900  
 GP 3.00°  
 TCH 58

VGSI and RNAV glidepath not coincident (VGSI Angle 3.00/TCH 73).  
 See planview for multiple IF locations.



CATEGORY	A	B	C	D
RNP 0.30 DA*	1759/45 456 (500-7%)			
RNP 0.30 DA	2049-1¾ 746 (800-1¾)			

## AUTHORIZATION REQUIRED

NW-1, 28 NOV 2024 to 26 DEC 2024

NW-1, 28 NOV 2024 to 26 DEC 2024