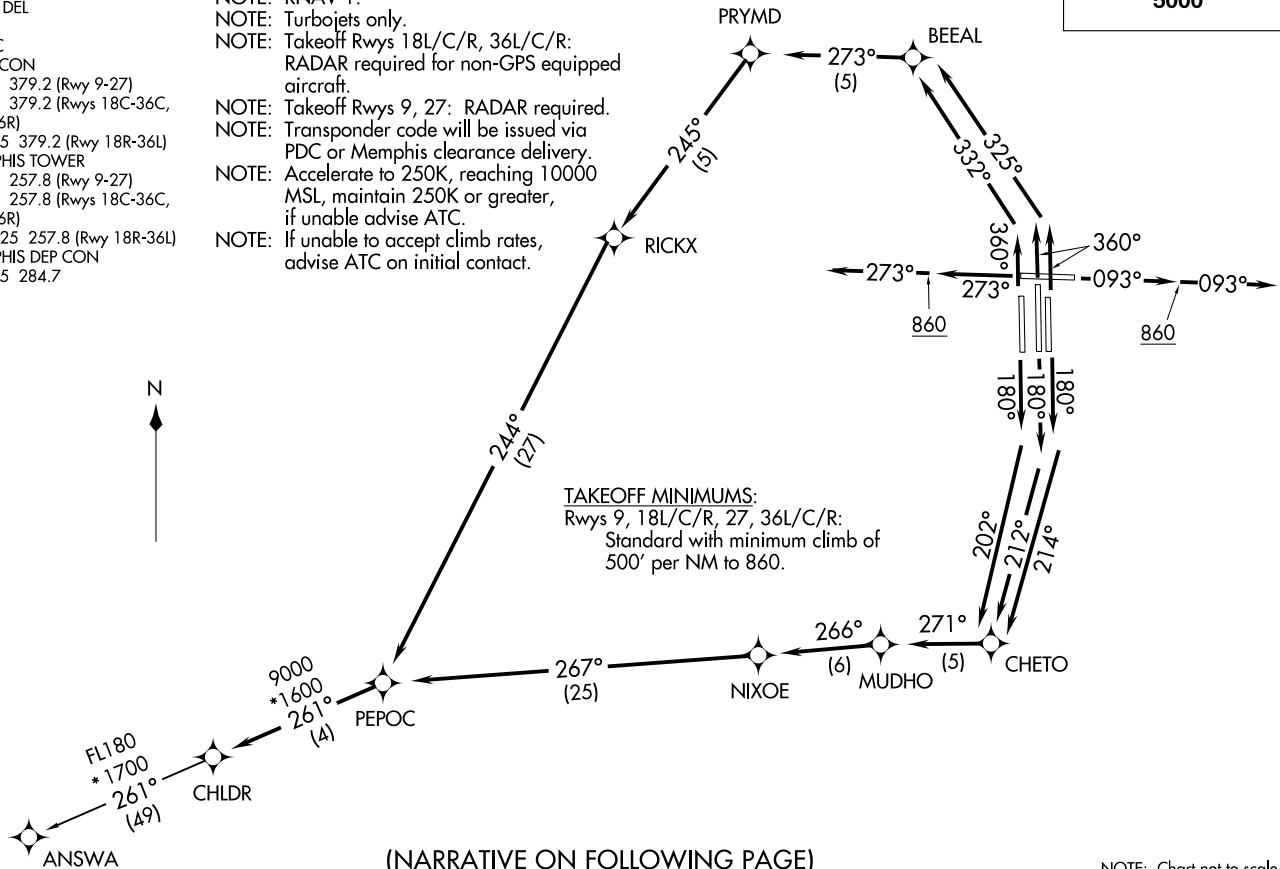


CHILDR FIVE DEPARTURE (RNAV)  
(CHILDR5, CHILDR) 31 DEC 20  
MEMPHIS, TENNESSEE  
MEMPHIS INTL (MEM)

D-ATIS  
127.75  
CLNC DEL  
125.2  
CPDLC  
GND CON  
121.0 379.2 (Rwy 9-27)  
121.9 379.2 (Rwys 18C-36C,  
18L-36R)  
121.65 379.2 (Rwy 18R-36L)  
MEMPHIS TOWER  
118.3 257.8 (Rwy 9-27)  
119.7 257.8 (Rwys 18C-36C,  
18L-36R)  
128.425 257.8 (Rwy 18R-36L)  
MEMPHIS DEP CON  
124.65 284.7

NOTE: DME/DME/IRU or GPS required.  
NOTE: RNAV 1.  
NOTE: Turbojets only.  
NOTE: Takeoff Rwys 18L/C/R, 36L/C/R:  
RADAR required for non-GPS equipped  
aircraft.  
NOTE: Takeoff Rwys 9, 27: RADAR required.  
NOTE: Transponder code will be issued via  
PDC or Memphis clearance delivery.  
NOTE: Accelerate to 250K, reaching 10000  
MSL, maintain 250K or greater,  
if unable advise ATC.  
NOTE: If unable to accept climb rates,  
advise ATC on initial contact.

TOP ALTITUDE:  
5000



TAKEOFF MINIMUMS:  
Rwys 9, 18L/C/R, 27, 36L/C/R:  
Standard with minimum climb of  
500' per NM to 860.

(NARRATIVE ON FOLLOWING PAGE)

NOTE: Chart not to scale.

(CHILDR5, CHILDR) 20366  
CHILDR FIVE DEPARTURE (RNAV)  
AL-233 (FAA)  
MEMPHIS INTL (MEM)  
MEMPHIS, TENNESSEE

CHLDR FIVE DEPARTURE (RNAV)



DEPARTURE ROUTE DESCRIPTION

TAKEOFF RUNWAY 9: Climb on heading 093° to 860, then continue climb on heading 093°, expect vectors to PEPOC, then on depicted route to CHLDR, thence....

TAKEOFF RUNWAY 18C: Climb on heading 180° to intercept course 212° to CHETO, then on depicted route to CHLDR, thence....

TAKEOFF RUNWAY 18L: Climb on heading 180° to intercept course 214° to CHETO, then on depicted route to CHLDR, thence....

TAKEOFF RUNWAY 18R: Climb on heading 180° to intercept course 202° to CHETO, then on depicted route to CHLDR, thence....

TAKEOFF RUNWAY 27: Climb on heading 273° to 860, then continue climb on heading 273°, expect vectors to PEPOC, then on depicted route to CHLDR, thence....

TAKEOFF RUNWAY 36L: Climb on heading 360° to intercept course 332° to BEEAL, then on depicted route to CHLDR, thence....

TAKEOFF RUNWAY 36C/R: Climb on heading 360° to intercept course 325° to BEEAL, then on depicted route to CHLDR, thence....

....maintain 5000. Expect clearance to filed altitude within ten (10) minutes after departure.

ANSWA TRANSITION (CHLDR5.ANSWA):

SE-1, 28 NOV 2024 to 26 DEC 2024

SE-1, 28 NOV 2024 to 26 DEC 2024