

GRRIZ FIVE DEPARTURE (RNAV)

MEMPHIS, TENNESSEE

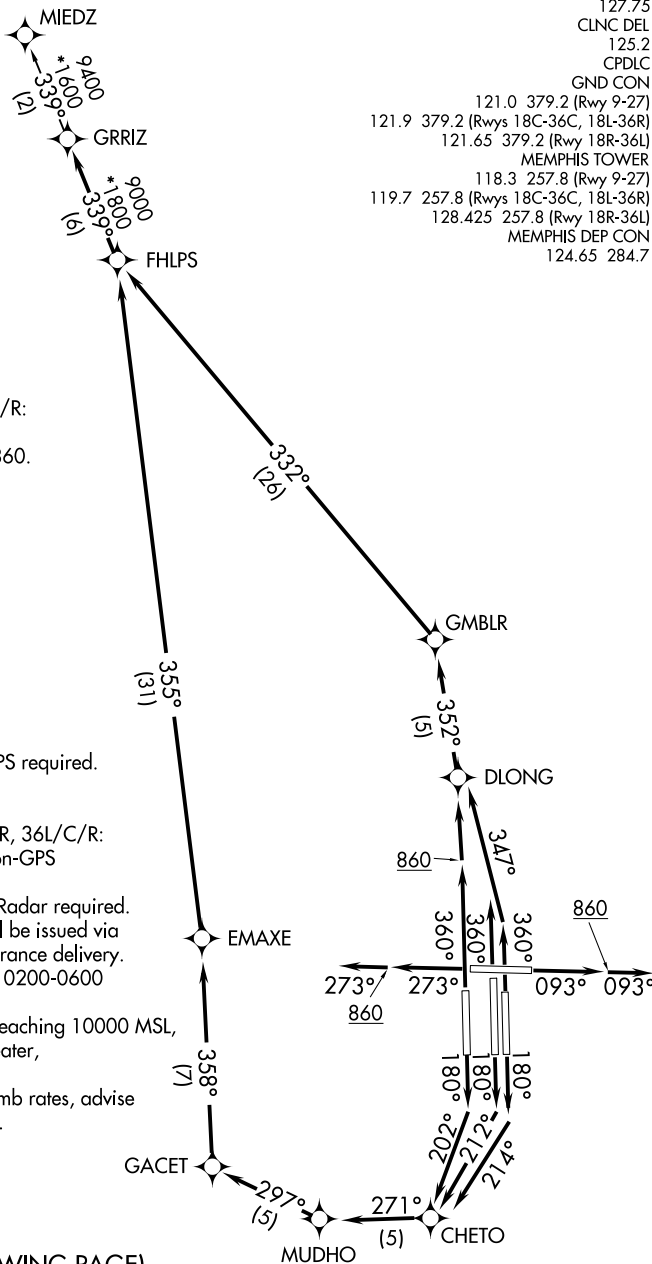
**TOP ALTITUDE:
5000**

D-ATIS 127.75
 CLNC DEL 125.2
 CPDLC
 GND CON 121.0 379.2 (Rwy 9-27)
 121.9 379.2 (Rwys 18C-36C, 18L-36R)
 121.65 379.2 (Rwy 18R-36L)
 MEMPHIS TOWER 118.3 257.8 (Rwy 9-27)
 119.7 257.8 (Rwys 18C-36C, 18L-36R)
 128.425 257.8 (Rwy 18R-36L)
 MEMPHIS DEP CON 124.65 284.7

TAKEOFF MINIMUMS:

Rwys 9, 18L/C/R, 27, 36L/C/R:
 Standard with minimum
 climb of 500' per NM to 860.

- NOTE: DME/DME/IRU or GPS required.
- NOTE: RNAV 1.
- NOTE: Turbojets only.
- NOTE: Takeoff Rwys 18L/C/R, 36L/C/R:
 Radar required for non-GPS
 equipped aircraft.
- NOTE: Takeoff Rwys 9, 27: Radar required.
- NOTE: Transponder code will be issued via
 PDC or Memphis clearance delivery.
- NOTE: Procedure authorized 0200-0600
 local only.
- NOTE: Accelerate to 250K, reaching 10000 MSL,
 maintain 250K or greater,
 if unable advise ATC.
- NOTE: If unable to accept climb rates, advise
 ATC on initial contact.



(NARRATIVE ON FOLLOWING PAGE)

NOTE: Chart not to scale.

GRRIZ FIVE DEPARTURE (RNAV)

(GRRIZ5.GRRIZ) 31DEC20

MEMPHIS, TENNESSEE
MEMPHIS INTL (MEM)

SE-1, 28 NOV 2024 to 26 DEC 2024

SE-1, 28 NOV 2024 to 26 DEC 2024

GRRIZ FIVE DEPARTURE (RNAV)



DEPARTURE ROUTE DESCRIPTION

TAKEOFF RUNWAY 9: Climb on heading 093° to 860, then continue climb on heading 093°, expect vectors to FHLPS, then on depicted route to GRRIZ, thence....

TAKEOFF RUNWAY 18C: Climb on heading 180° to intercept course 212° to CHETO, then on depicted route to GRRIZ, thence....

TAKEOFF RUNWAY 18L: Climb on heading 180° to intercept course 214° to CHETO, then on depicted route to GRRIZ, thence....

TAKEOFF RUNWAY 18R: Climb on heading 180° to intercept course 202° to CHETO, then on depicted route to GRRIZ, thence....

TAKEOFF RUNWAY 27: Climb on heading 273° to 860, then continue climb on heading 273°, expect vectors to FHLPS, then on depicted route to GRRIZ, thence....

TAKEOFF RUNWAY 36L: Climb on heading 360° to 860, then direct DLONG, then on depicted route to GRRIZ, thence....

TAKEOFF RUNWAYS 36C/R: Climb on heading 360° to intercept course 347° to DLONG, then on depicted route to GRRIZ, thence....

....maintain 5000. Expect clearance to filed altitude within ten (10) minutes after departure.

MIEDZ TRANSITION (GRRIZ5.MIEDZ):

SE-1, 28 NOV 2024 to 26 DEC 2024

SE-1, 28 NOV 2024 to 26 DEC 2024