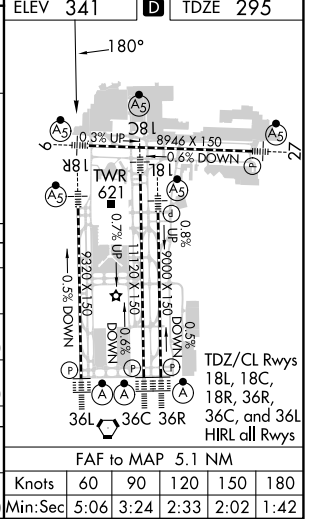
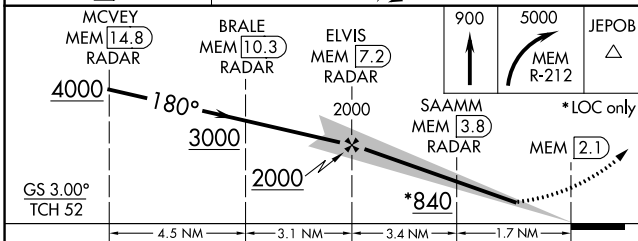
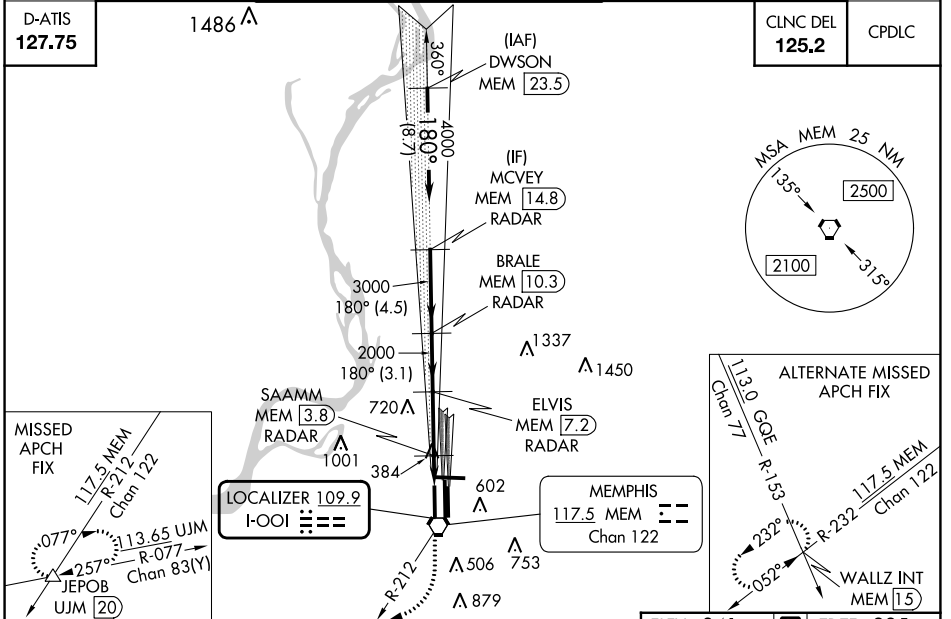


LOC I-OOI 109.9	APP CRS 180°	Rwy ldg 9320
		TDZE 295
		Apt Elev 341

ILS or LOC RWY 18R

MEMPHIS INTL (MEM)

Radar required for procedure entry, DME or RADAR required.		MALSR	MISSED APPROACH: Climb to 900 then climbing right turn to 5000 on MEM VORTAC R-212 to JEPOB INT/UJM 20 DME and hold.
Simultaneous approach authorized. For inop ALS, increase S-ILS 18R Cat E visibility to RVR 4000, S-LOC 18R Cat E visibility to 2 SM, SAAMM fix minimums, increase S-LOC 18R Cat E visibility to 1½ SM.			
MEMPHIS APP CON		MEMPHIS TOWER	GND CON
119.1 291.6 (176°-355°)	(Rwy 9-27)	118.3 257.8	(Rwy 9-27) 121.0 379.2
125.8 338.3 (356°-175°)	(Rwys 18C-36C, 18L-36R)	119.7 257.8	(Rwys 18C-36C, 18L-36R) 121.9 379.2
	(Rwy 18R-36L)	128.425 257.8	(Rwy 18R-36L) 121.65 379.2



ELEV 341	TDZE 295
MCVEY MEM 14.8 RADAR	BRALE MEM 10.3 RADAR
ELVIS MEM 7.2 RADAR	SAAMM MEM 3.8 RADAR
MEMPHIS MEM 117.5 MEM Chan 122	MEM 2.1
GS 3.00° TCH 52	*LOC only
4.5 NM	3.1 NM
3.4 NM	1.7 NM
CATEGORY	A B C D E
S-ILS 18R	495/18 200 (200-½) 495/24 200 (200-½)
S-LOC 18R	840/24 545 (500-½) 840/50 545 (500-1) 840/60 545 (500-1¼) 840-1½ 545 (500-1½)
CIRCLING	940-1 599 (600-1) 940-1½ 599 (600-1½) 1020-2¼ 679 (700-2¼) 1140-2¾ 799 (800-2¾)
SAAMM FIX MINIMUMS (DME OR RADAR REQUIRED)	
S-LOC 18R	700/24 405 (400-½) 700/40 405 (400-¾) 700/50 405 (400-1)
CIRCLING	940-1 599 (600-1) 940-1½ 599 (600-1½) 1020-2¼ 679 (700-2¼) 1140-2¾ 799 (800-2¾)
Knots	60 90 120 150 180
Min:Sec	5:06 3:24 2:33 2:02 1:42

SE-1, 28 NOV 2024 to 26 DEC 2024

SE-1, 28 NOV 2024 to 26 DEC 2024