

(NARRATIVE ON FOLLOWING PAGE)

MEMPHIS APP CON
119.1 291.6 (176°-355°)
125.8 338.3 (356°-175°)
D-ATIS 127.75

- NOTE: DME and RADAR required.
- NOTE: Procedure not available for RNAV capable Turbojets.
- NOTE: RNAV capable Turbojets must file the HOBKR RNAV STAR.
- NOTE: Maintain last assigned altitude until cleared to "descend via the MARVELL SIX," then comply with altitude restrictions as published.

TEXARKANA
116.3 TXK
Chan 110

EL DORADO
115.5 ELD
Chan 102

OGONY
FL210 290K

GREENVILLE
114.25 GLH
Chan 89 (Y)

MARVELL
113.65 UJM
Chan 83(Y)

BARFF
280K

MADDN
4000
052°

JAMEA
12000 250K
10000

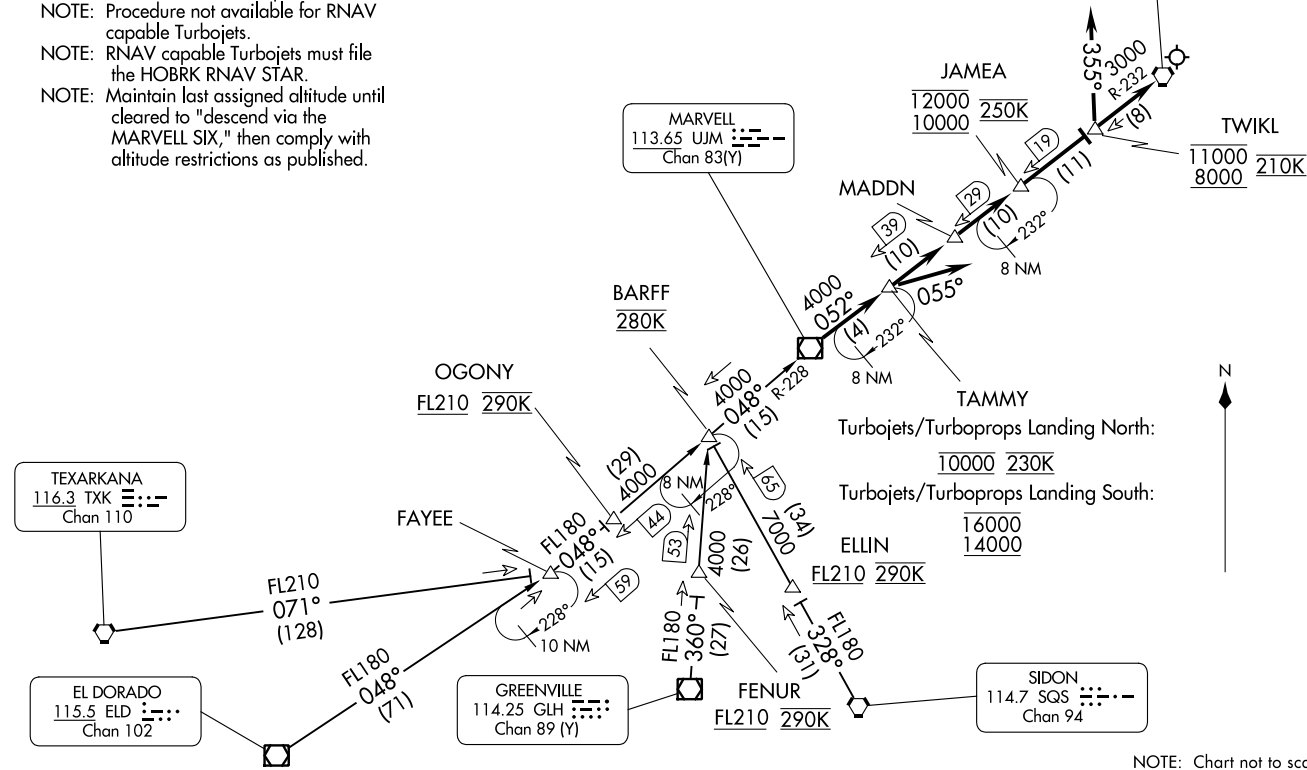
TAMMY
Turbojets/Turboprops Landing North:
10000 230K
Turbojets/Turboprops Landing South:
16000 7000
ELLIN
14000

FENUR
FL210 290K

SIDON
114.7 SQS
Chan 94

MEMPHIS
117.5 MEM
Chan 122

TWIKL
11000 210K
8000



NOTE: Chart not to scale.

MARVELL SIX ARRIVAL
(UJM, UJM6) 10NOV16

MEMPHIS, TENNESSEE
MEMPHIS INTL (MEM)

(UJM, UJM6) 23334
MARVELL SIX ARRIVAL

AL-253 (FAA)

MEMPHIS INTL (MEM)
MEMPHIS, TENNESSEE

ARRIVAL ROUTE DESCRIPTION

EL DORADO TRANSITION (ELD.UJM6): From over ELD VOR/DME on ELD R-048 to FAYEE, then on UJM R-228 to UJM VOR/DME. Thence. . . .

GREENVILLE TRANSITION (GLH.UJM6): From over GLH VOR/DME on GLH R-360 to BARFF, then on UJM R-228 to UJM VOR/DME. Thence. . . .

SIDON TRANSITION (SQS.UJM6): From over SQS VORTAC on SQS R-328 to BARFF, then on UJM R-228 to UJM VOR/DME. Thence. . . .

TEXARKANA TRANSITION (TXK.UJM6): From over TXK VORTAC on TXK R-071 to FAYEE, then on UJM R-228 to UJM VOR/DME. Thence. . . .

TURBOJETS/TURBOPROPS LANDING SOUTH: From over UJM VOR/DME on MEM VORTAC R-232 to cross TAMMY/MEM 39 DME at or above 14000 and at or below 16000, then on MEM VORTAC R-232 to MADDN/MEM 29 DME, then on MEM VORTAC R-232 to JAMEA/MEM 19 DME at or above 10000 and at or below 12000 at 250K, then on MEM VORTAC R-232 to cross TWIKL/ MEM 8 DME at or above 8000 and at or below 11000 and at 210K, then on heading 355°, expect radar vectors to final approach course.

TURBOJETS/TURBOPROPS LANDING NORTH: From over UJM VOR/DME on MEM VORTAC R-232 to cross TAMMY/MEM 39 DME at 10000 and at 230K, then on heading 055, expect radar vectors to final approach course.

NON-TURBINE AIRCRAFT ALL RUNWAYS: From over UJM VOR/DME on MEM VORTAC R-232 to cross MEM VORTAC at or above 3000, expect radar vectors to final approach course after passing TAMMY/MEM 39 DME.

SE-1, 28 NOV 2024 to 26 DEC 2024

SE-1, 28 NOV 2024 to 26 DEC 2024