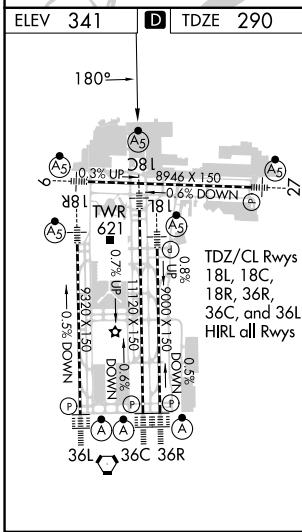
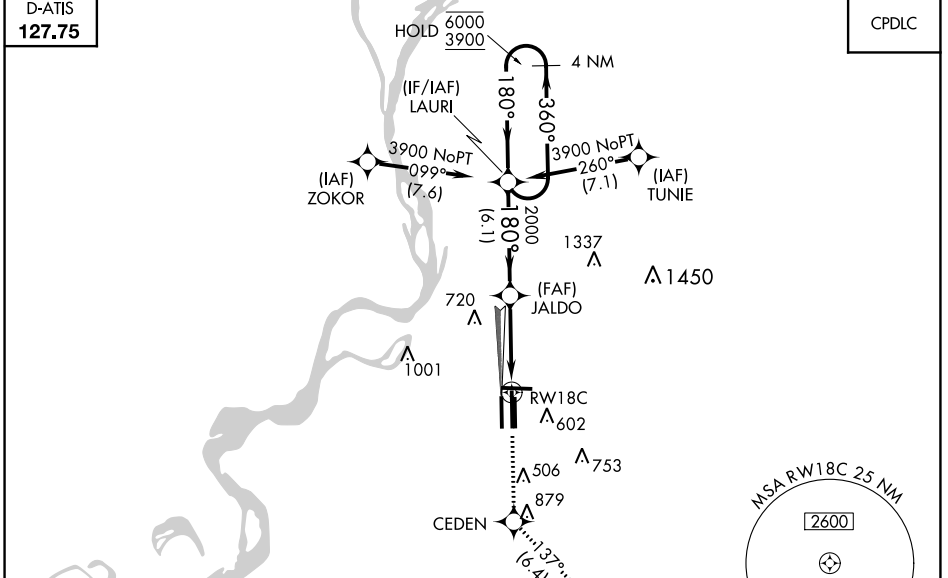


WAAS CH 97507	APP CRS 180°	Rwy Idg TDZE Apt Elev	1120 290 341
-------------------------	------------------------	-----------------------------	---

RNAV (GPS) Z RWY 18C

MEMPHIS INTL (MEM)

RNP APCH - GPS.		MALSR		MISSED APPROACH: Climb to 5000 direct CEDEN and on track 137° to KEEZE and hold, continue climb-in-hold to 5000.	
<p>Simultaneous approach authorized. For uncompensated Baro-VNAV systems, LNAV/VNAV NA below -15°C or above 54°C. Use of FD or AP required during simultaneous operations. LNAV procedure NA during simultaneous operations. For Inop ALS, increase LPV all Cats visibility to RVR 5500 and LNAV/VNAV all Cats visibility to 1½ SM.</p>					
MEMPHIS APP CON		MEMPHIS TOWER		GND CON	
119.1 291.6 (176°-355°)	(Rwy 9-27)	118.3 257.8	(Rwy 9-27)	121.0 379.2	CLNC DEL
125.8 338.3 (356°-175°)	(Rwys 18C-36C, 18L-36R)	119.7 257.8	(Rwys 18C-36C, 18L-36R)	121.9 379.2	125.2
	(Rwy 18R-36L)	128.425 257.8	(Rwy 18R-36L)	121.65 379.2	



ELEV 341	D	TDZE 290		
5000	CEDEN	ir 137°	KEEZE	4 NM Holding Pattern
		JALDO 2000	1.7 NM to RWY 18C	360° → 6000 ← 180° 3900
		1.7 NM	3.5 NM	6.1 NM
CATEGORY	A	B	C	D
LPV DA		665/35	375 (400-½)	
LNAV/VNAV DA		782/50	492 (500-1)	
LNAV MDA	880/24	590 (600-½)	880-1¼	590 (600-1¼)
C CIRCLING	940-1	599 (600-1)	940-1¾ 599 (600-1¾)	1020-2 ¼ 679 (700-2¼)

SE-1, 28 NOV 2024 to 26 DEC 2024

SE-1, 28 NOV 2024 to 26 DEC 2024