

HI-TACAN or VOR-B

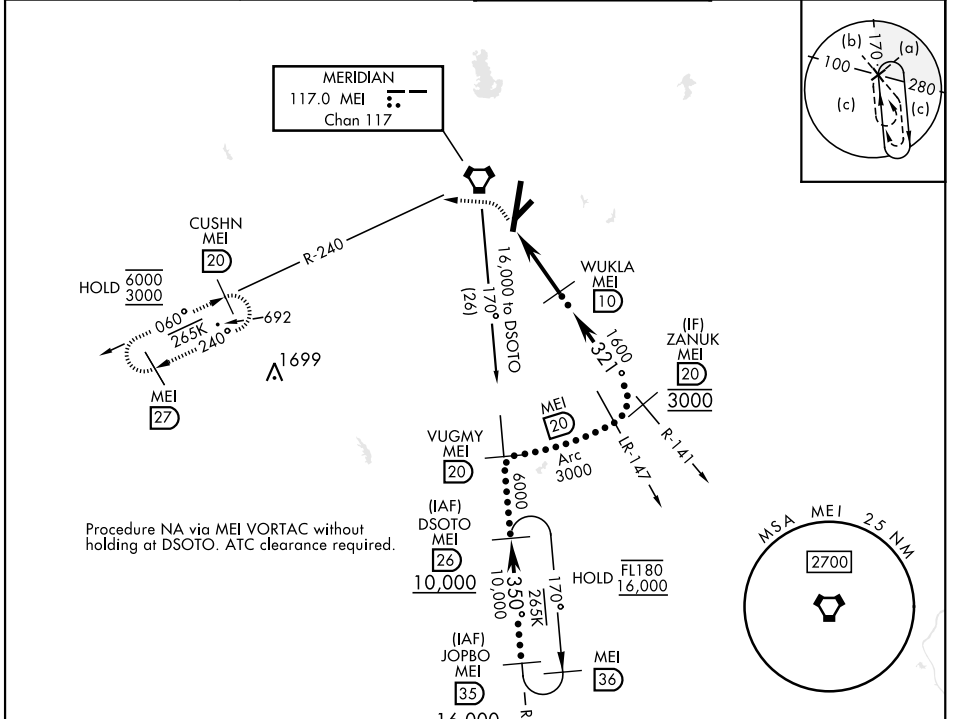
VORTAC MEI 117.0 Chan 117	APCH CRS 321°	Rwy ldg TDZE Arpt Elev N/A N/A 298	[USAF]	KEY FLD (KMEI)
---	-------------------------	--	--------	----------------

DME required

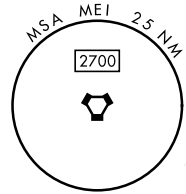
* Circling to Rwy 22 NA at night. Circling NA SE of Rwy 1 and 22.

MISSED APPROACH: Climbing left turn to 3000 on heading 270° and MEI VORTAC R-240 to CUSHN/ MEI 20 DME and hold.

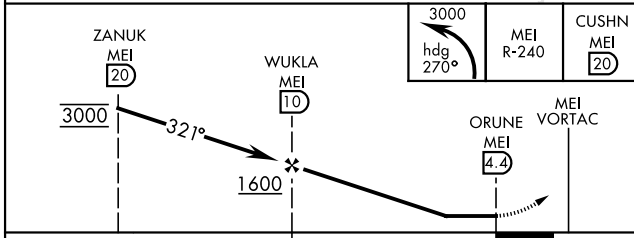
ATIS 126.475 291.675	MERIDIAN APP CON 120.5 269.325	TOWER ★ 133.975 (CTAF) 0 257.8	GND CON 121.9 348.6
--------------------------------	--	---	-------------------------------



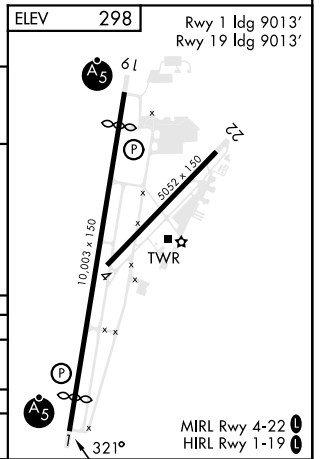
Procedure NA via MEI VORTAC without holding at DSOTO. ATC clearance required.



EMERG SAFE ALT 100 NM 3700



CATEGORY	C	D	E
CIRCLING*	1140-2½ 842 (900-2½)	1140-2¾ 842 (900-2¾)	1140-3 842 (900-3)
HATTIESBURG-LAUREL RGNL ALTIMETER SETTING			
CIRCLING*	1280-3	982	(1000-3)



HI-TACAN or VOR-B

SC-4, 28 NOV 2024 to 26 DEC 2024

SC-4, 28 NOV 2024 to 26 DEC 2024