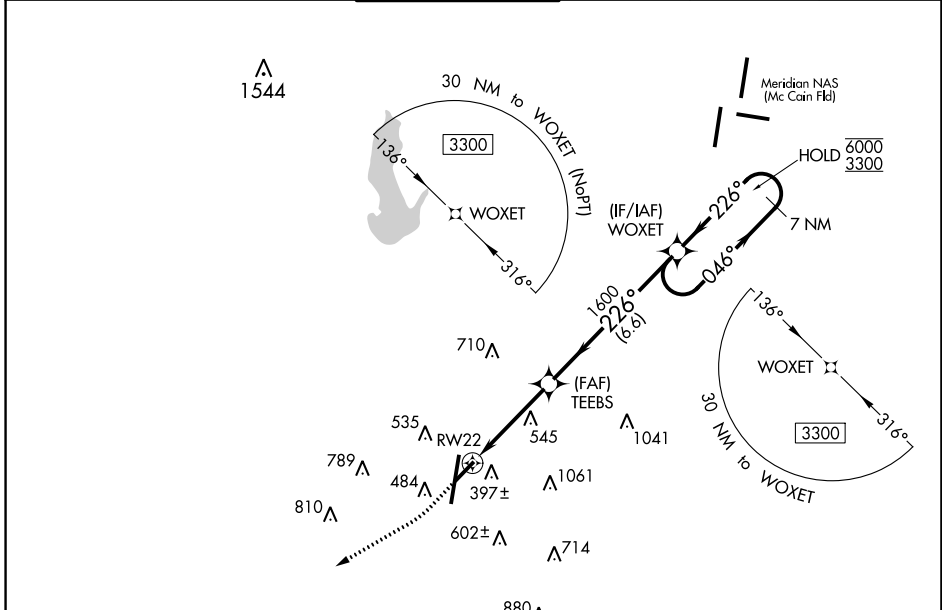


WAAS CH 48833 W22A	APP CRS 226°	Rwy Idg 5052 TDZE 298 Apt Elev 298
--	------------------------	---

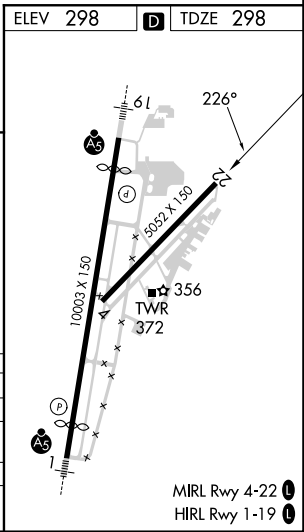
RNAV (GPS) RWY 22

KEY FLD (MEI)

RNP APCH - GPS.		MISSED APPROACH: Climb to 1000 then climbing right turn to 3000 direct PAULD and hold.			
▼ Rwy 22 helicopter visibility reduction below 3/4 SM NA. ▲ For uncompensated Baro-VNAV systems, LNAV/VNAV NA below -7°C or above 54°C. ▲ Circling NA east of Rwy 1 and southeast of Rwy 22.					
ATIS 126.475 291.675	MERIDIAN APP CON ★ 120.5 269.325	KEY TOWER ★ 133.975 (CTAF) 0 257.8	GND CON 121.9 348.6	CLNC DEL 121.9 348.6	UNICOM 122.95



ELEV 298	D TDZE 298				
1000	3000	PAULD	TEEBBS	WOXET	7 NM Holding Pattern
↑	↷	△	1600	046° → 6000	← 226° 3300
1.8 NM to RW22		1.8 NM		6.6 NM	
RW22		1600		GP 3.00°	
				TCH 52	
CATEGORY	A	B	C	D	
LPV DA		592-7/8	294 (300-7/8)		
LNAV/VNAV DA		825-1 1/2	527 (600-1 1/2)		
LNAV MDA	920-1	622 (700-1)	920-3/4	622 (700-1 3/4)	
C CIRCLING	920-1	622 (700-1)	960-1 3/4 662 (700-1 3/4)	1120-2 3/4 822 (900-2 3/4)	



SC-4, 28 NOV 2024 to 26 DEC 2024

SC-4, 28 NOV 2024 to 26 DEC 2024