

WAAS CH 42533 W04A	APP CRS 046°	Rwy Idg 5052 TDZE 295 Apt Elev 298
--	------------------------	---

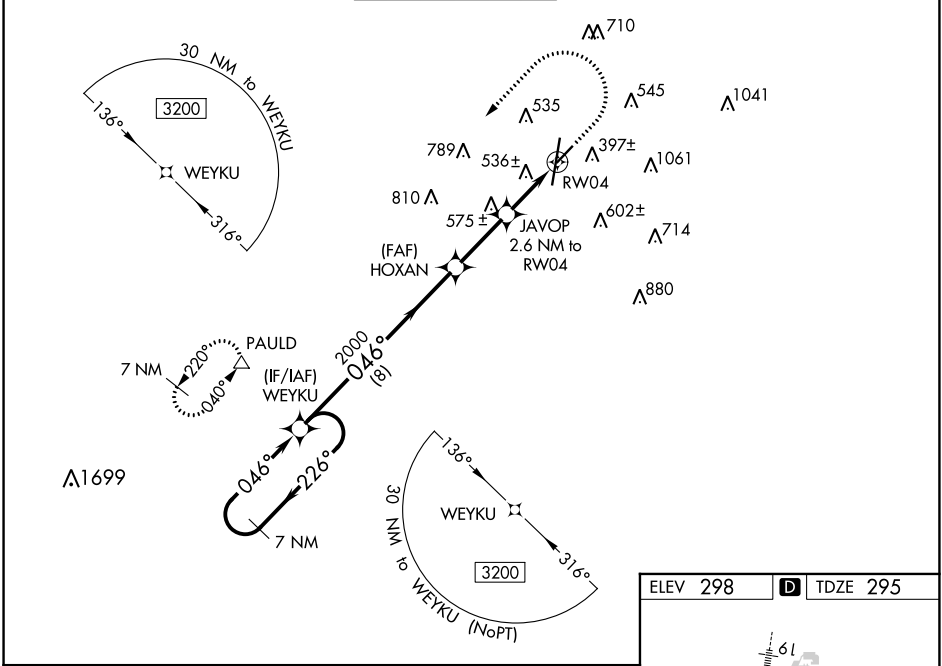
RNAV (GPS) RWY 4

KEY FLD (MEI)

⚠ For uncompensated Baro-VNAV systems, LNAV/VNAV NA below -8°C (18°F) or above 54°C (130°F). Circling NA southeast of Rwy 1 and 22. DME/DME RNP-0.3 NA. When local altimeter setting not received, use Hattiesburg/Laurel Rgnl altimeter setting and increase all DA 138 feet and all MDA 140 feet; increase LPV and LNAV/VNAV all Cats visibilities ½ mile, LNAV Cats C/D visibility ½ mile, and Circling Cat C visibility ½ mile and Cat D visibility ¼ mile. Helicopter visibility reduction below ¾ SM NA. Baro-VNAV and VDP NA with Hattiesburg/Laurel Rgnl altimeter setting. Night landing: Rwy 22 NA.

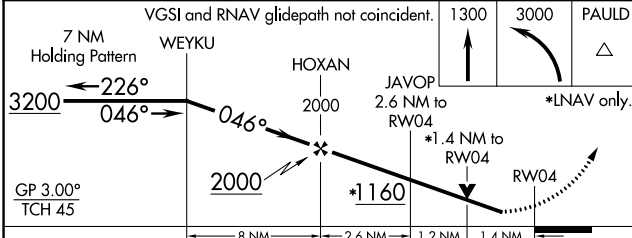
MISSED APPROACH:
Climb to 1300 then climbing left turn to 3000 direct PAULD and hold.

ATIS 126.475 291.675	MERIDIAN APP CON ★ 120.5 269.325	KEY TOWER ★ 133.975 (CTAF) 0 257.8	GND CON 121.9 348.6	CLNC DEL 121.9 348.6	UNICOM 122.95
--------------------------------	--	--	-------------------------------	--------------------------------	-------------------------

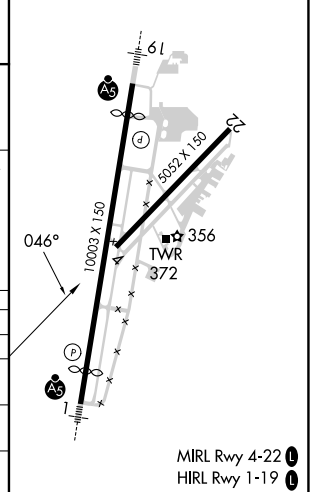


SC-4, 28 NOV 2024 to 26 DEC 2024

SC-4, 28 NOV 2024 to 26 DEC 2024



ELEV 298	D TDZE 295
----------	-------------------



MIRL Rwy 4-22
HIRL Rwy 1-19

CATEGORY	A	B	C	D
LPV DA	576-7/8		281 (300-7/8)	
LNAV/VNAV DA	849-17/8		554 (600-17/8)	
LNAV MDA	800-1 505 (600-1)		800-13/8 505 (600-13/8)	
C CIRCLING	860-1 562 (600-1)	880-1 582 (600-1)	960-13/4 662 (700-13/4)	1120-23/4 822 (900-23/4)