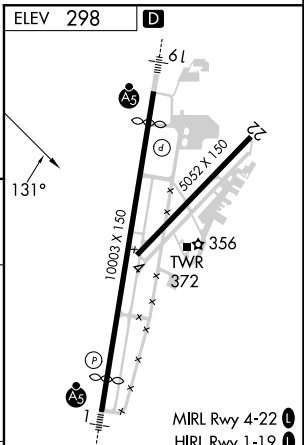
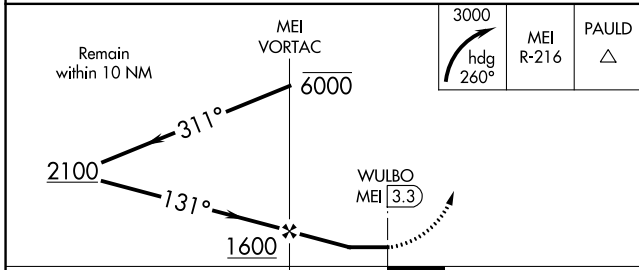
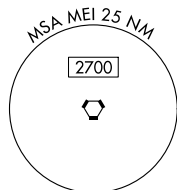
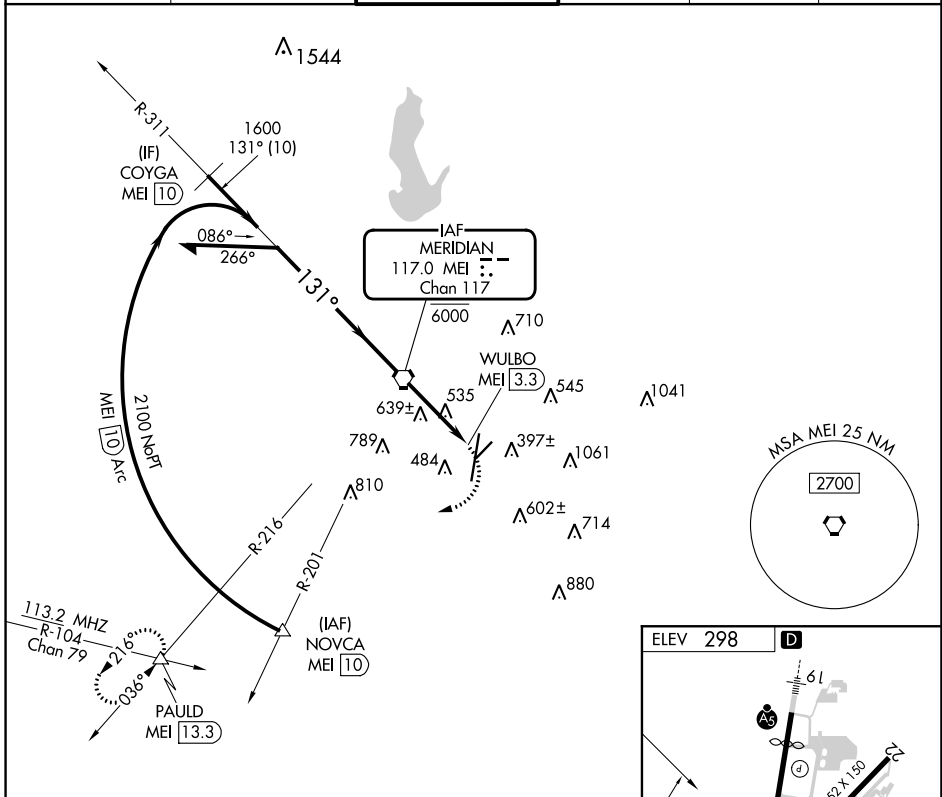


VORTAC MEI <b>117.0</b> Chan <b>117</b>	APP CRS <b>131°</b>	Rwy Idg TDZE Apt Elev	<b>N/A</b> <b>N/A</b> <b>298</b>
---	------------------------	-----------------------------	--

**VOR-A**  
KEY FLD (MEI)

<p><b>⚠</b> Circling NA east of Rwy 1 and southeast of Rwy 22. <b>⚠</b> Procedure turn NA for Cat E.</p>		<p>MISSED APPROACH: Climbing right turn to 3000 on heading 260° and MEI VORTAC R-216 to PAULD INT/MEI VORTAC 13.3 DME and hold.</p>			
ATIS <b>126.475 291.675</b>	MERIDIAN APP CON ★ <b>120.5 269.325</b>	KEY TOWER ★ <b>133.975 (CTAF) 0 257.8</b>	GND CON <b>121.9 348.6</b>	CLNC DEL <b>121.9 348.6</b>	UNICOM <b>122.95</b>



CATEGORY	A	B	C	D	E	FAF to MAP 3.3 NM					
CIRCLING	900-1	602 (700-1)	960-1¾ 662 (700-1¾)	1120-2¾ 822 (900-2¾)	1120-3 822 (900-3)	Knots	60	90	120	150	180
						Min:Sec	3:18	2:12	1:39	1:19	1:06

SC-4, 28 NOV 2024 to 26 DEC 2024

SC-4, 28 NOV 2024 to 26 DEC 2024