

LOC/DME I-OLX 111.55 Chan 52 (Y)	APP CRS 128°	Rwy Idg TDZE Apt Elev	6000 8 8
---	------------------------	-----------------------------	-------------------------------------

ILS or LOC RWY 12

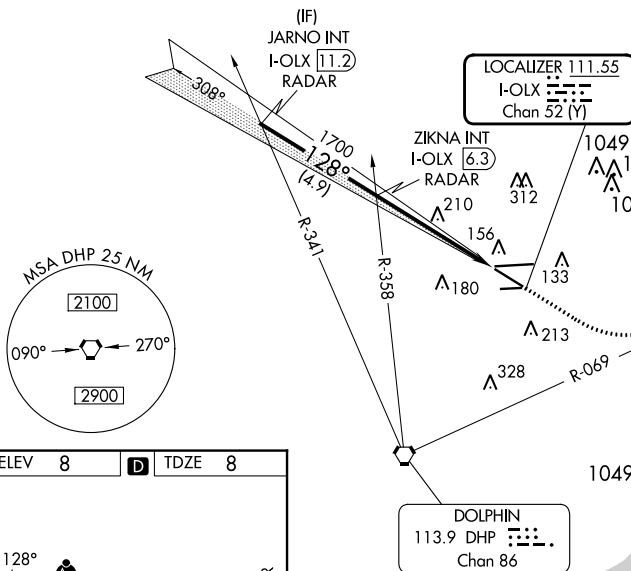
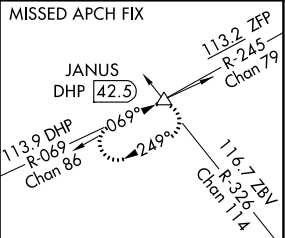
MIAMI-OPA LOCKA EXEC (OPF)

⚠ Inop table does not apply to S-ILS 12. Helicopter visibility reduction below 3/4 SM NA. VDP NA with Miami Intl altimeter setting. When local altimeter setting not received, use Miami Intl altimeter setting and increase all DA/MDA 20 feet and Circling Cat D visibility 1/4 SM. For inop MALSR, increase S-LOC 12 Cats A and B visibility to 1 mile and Cats C and D visibility to 1 1/8 miles.

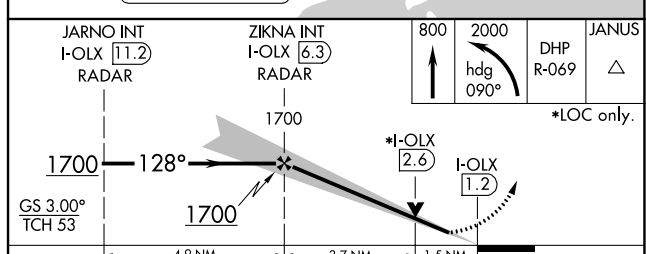
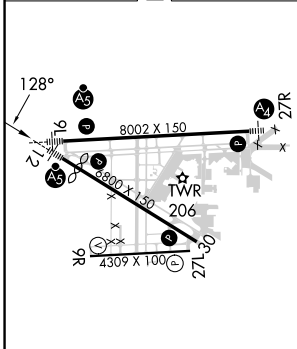
MALSR
MISSED APPROACH: Climb to 800 then climbing left turn to 2000 on heading 090° and DHP VORTAC R-069 to JANUS INT/DHP 42.5 DME and hold.

ATIS 125.9	MIAMI APP CON 128.6 306.975	OPA LOCKA TOWER * 134.675 (CTAF) 0	GND CON 120.025	CLNC DEL 119.2	GCO 119.45
----------------------	---------------------------------------	--	---------------------------	--------------------------	----------------------

RADAR REQUIRED



ELEV 8	D	TDZE 8
--------	----------	--------



MIRL Rwy 9R-27L HIRL Rwys 9L-27R and 12-30 FAF to MAP 5.2 NM	Knots				
	60	90	120	150	180
	5:12	3:28	2:36	2:05	1:44
Min:Sec					
CATEGORY	A	B	C	D	
S-ILS 12	208-3/4 200 (200-3/4)				
S-LOC 12	520-3/4	512 (600-3/4)	520-1	512 (600-1)	
CIRCLING	540-1	532 (600-1)	620-1 3/4 612 (700-1 3/4)	740-2 1/4	732 (800-2 1/4)

SE-3, 28 NOV 2024 to 26 DEC 2024

SE-3, 28 NOV 2024 to 26 DEC 2024