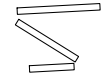


MAYNR THREE DEPARTURE (RNAV)
(MAYNRR3.MAYNRR) 31OCT24

MIAMI DEP CON
119.45 290.325
ATIS
125.9
CLNC DEL
119.2
GND CON
120.025
OPA LOCKA TOWER ★
134.675 (CTAF)

RNAV 1 - DME/DME/IRU or GPS.
From SLIPT to MAXIM: RNAV 1- GPS.
From SLIPT to CANOA: RNAV 1- GPS.
RADAR required for non-GPS equipped aircraft.
RADAR required.

**TOP ALTITUDE:
ASSIGNED BY ATC**

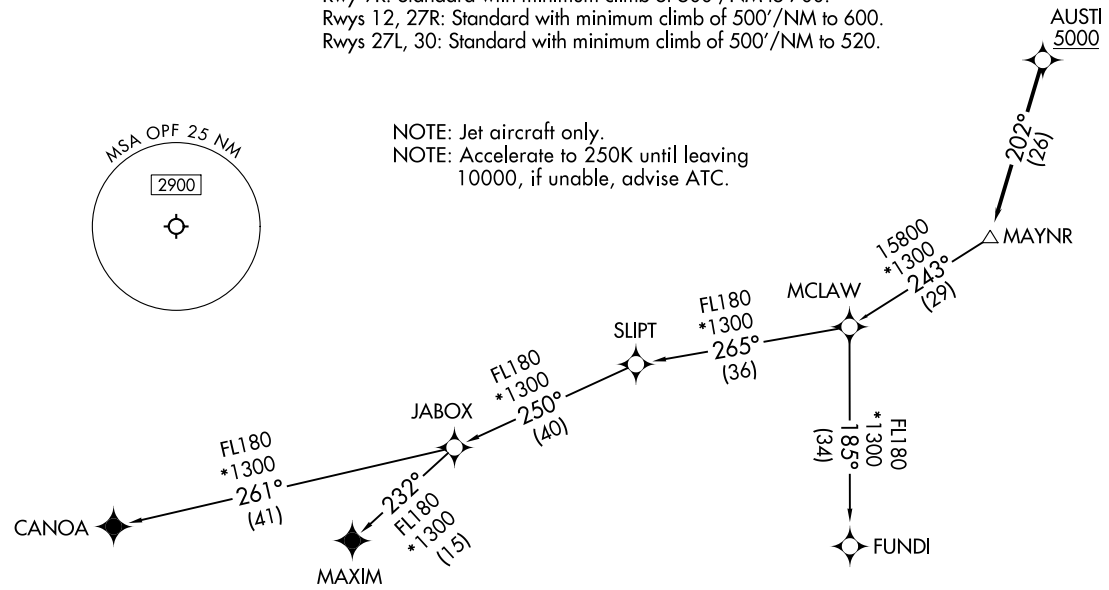
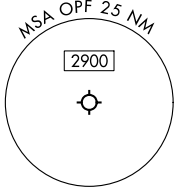


(MAYNRR3.MAYNRR) 24305
MAYNR THREE DEPARTURE (RNAV)
AL-256 (FAA)

TAKEOFF MINIMUMS

Rwy 9L: Standard with minimum climb of 500'/NM to 1000.
Rwy 9R: Standard with minimum climb of 500'/NM to 700.
Rwys 12, 27R: Standard with minimum climb of 500'/NM to 600.
Rwys 27L, 30: Standard with minimum climb of 500'/NM to 520.

NOTE: Jet aircraft only.
NOTE: Accelerate to 250K until leaving
10000, if unable, advise ATC.



NOTE: Chart not to scale.

(CONTINUED ON FOLLOWING PAGE)

MIAMI-OPA LOCKA EXEC (OPF)
MIAMI, FLORIDA

MIAMI-OPA LOCKA EXEC (OPF)
MIAMI, FLORIDA

MAYNR THREE DEPARTURE (RNAV)



DEPARTURE ROUTE DESCRIPTION

TAKEOFF RUNWAYS 9L/R, 12, 27L/R, 30: Climb on heading assigned by ATC for vectors to cross AUSTI at or above 5000, thence. . . .

. . . .on track 202° to MAYNR, then on assigned transition, maintain ATC assigned altitude. Expect clearance to filed altitude within 10 minutes after departure.

CANOA TRANSITION (MAYNR3.CANOA)

FUNDI TRANSITION (MAYNR3.FUNDI)

MAXIM TRANSITION (MAYNR3.MAXIM)

SE-3, 28 NOV 2024 to 26 DEC 2024

SE-3, 28 NOV 2024 to 26 DEC 2024